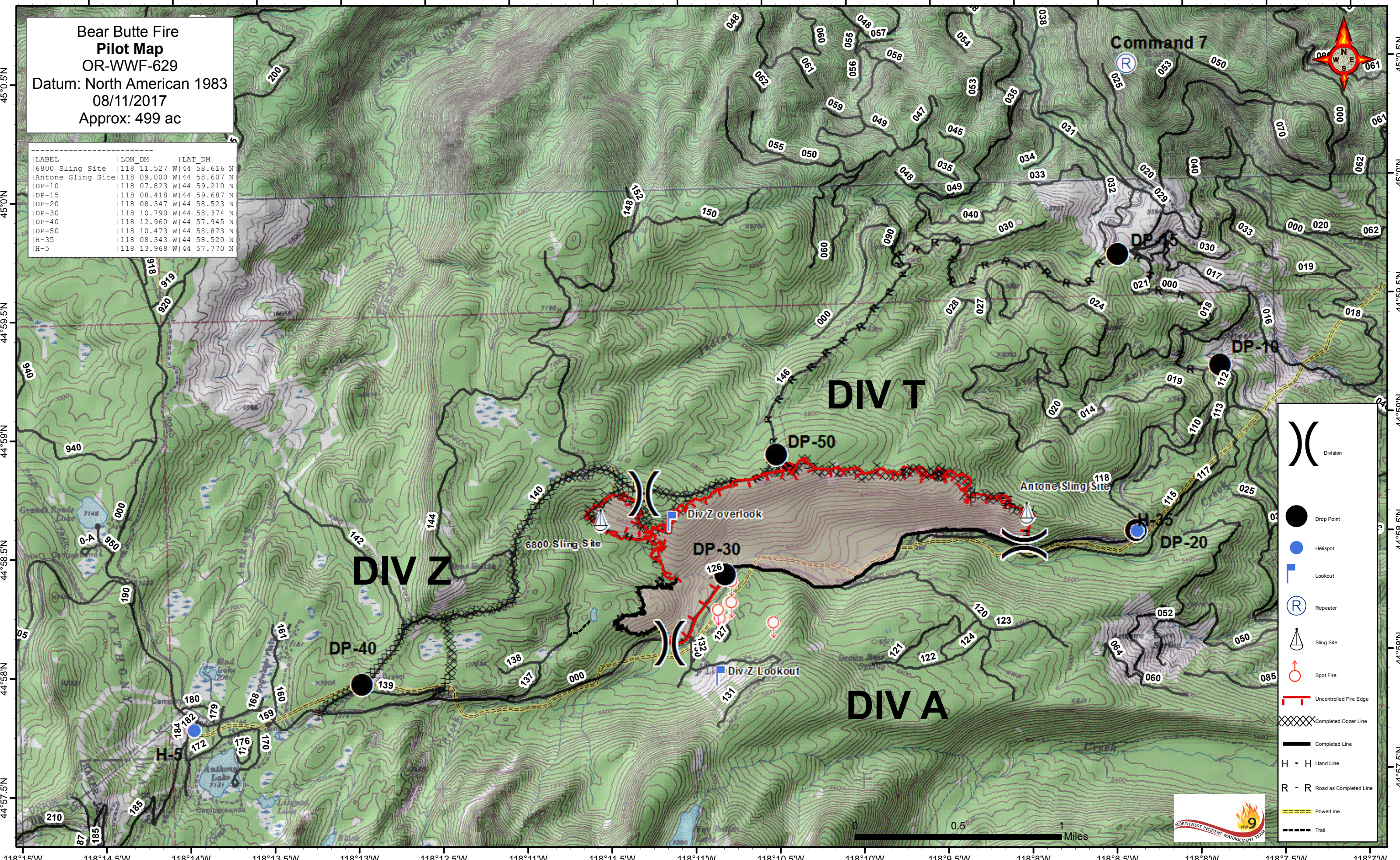


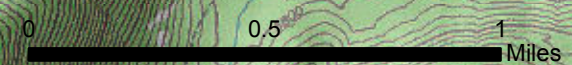
118°14.5'W 118°14'W 118°13.5'W 118°13'W 118°12.5'W 118°11'W 118°11.5'W 118°10.5'W 118°10'W 118°9.5'W 118°8'W 118°8.5'W 118°8'W 118°7.5'W 118°7'W

**Bear Butte Fire
Pilot Map**
OR-WWF-629
Datum: North American 1983
08/11/2017
Approx: 499 ac

Label	Lon_DM	Lat_DM
6800 Sling Site	118 11.527 W 44 58.616 N	
Antone Sling Site	118 09.000 W 44 58.607 N	
DP-10	118 07.823 W 44 59.210 N	
DP-15	118 08.418 W 44 59.687 N	
DP-20	118 08.347 W 44 58.523 N	
DP-30	118 10.790 W 44 58.374 N	
DP-40	118 12.960 W 44 57.945 N	
DP-50	118 10.473 W 44 58.873 N	
H-35	118 08.343 W 44 58.520 N	
H-5	118 13.968 W 44 57.770 N	



- Division
- Drop Point
- Helispot
- Lookout
- Repeater
- Sling Site
- Spot Fire
- Uncontrolled Fire Edge
- Completed Dozer Line
- Completed Line
- H - H Hand Line
- R - R Road as Completed Line
- PowerLine
- Trail



118°15'W 118°14.5'W 118°14'W 118°13.5'W 118°13'W 118°12.5'W 118°11'W 118°11.5'W 118°10.5'W 118°10'W 118°9.5'W 118°8'W 118°8.5'W 118°8'W 118°7.5'W 118°7'W

45°0.5'N
45°0'N
44°59.5'N
44°59'N
44°58.5'N
44°58'N
44°57.5'N

45°0.5'N
45°0'N
44°59.5'N
44°59'N
44°58.5'N
44°58'N
44°57.5'N