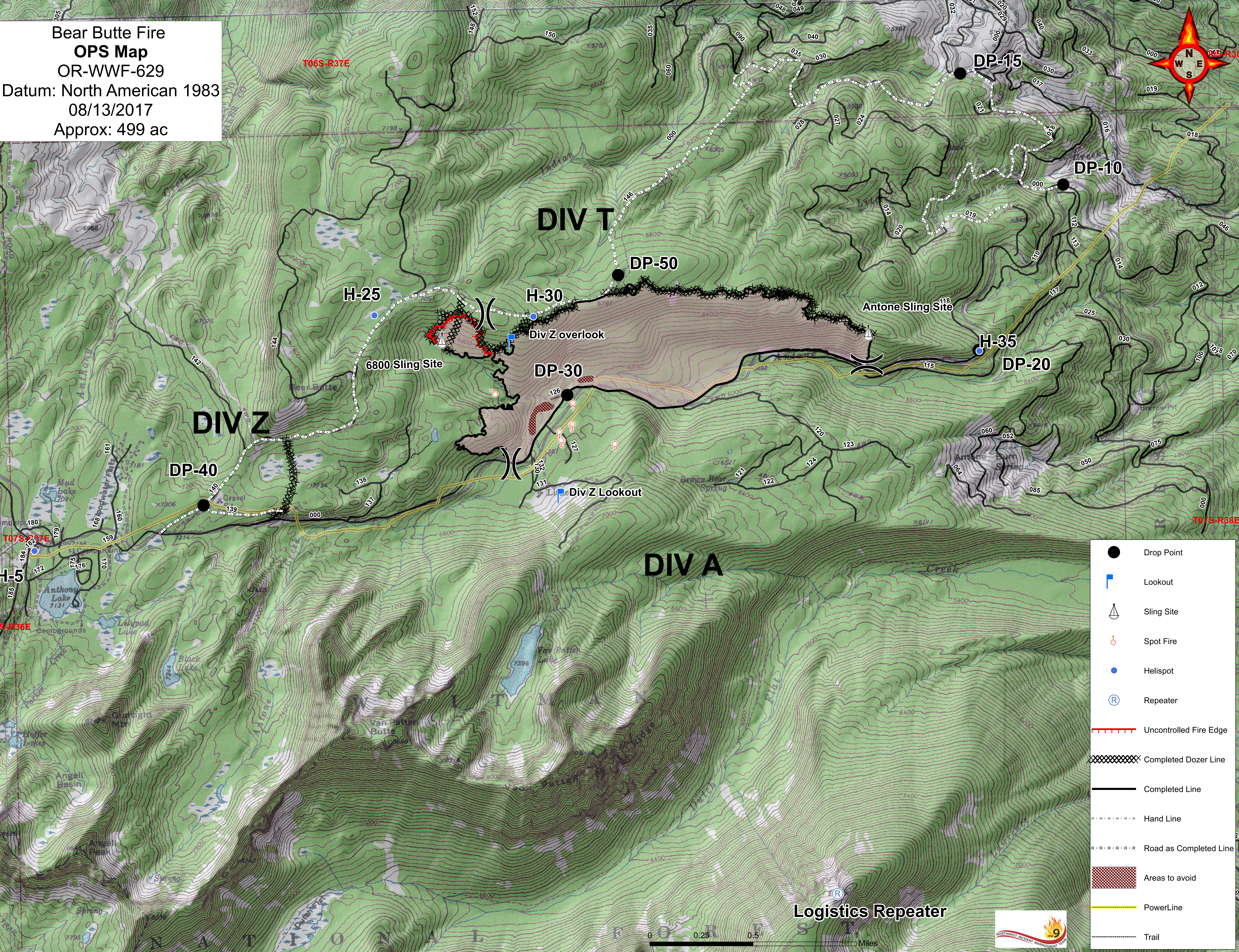
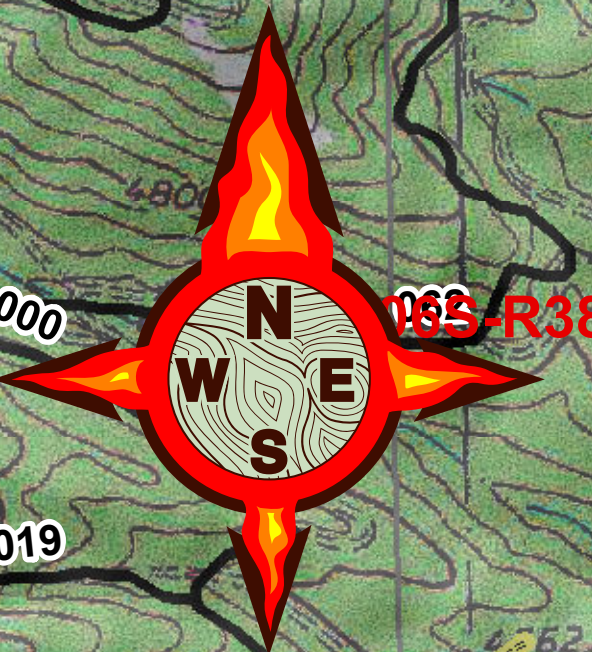


118°14'W 118°13.5'W 118°13'W 118°12.5'W 118°11'W 118°11.5'W 118°10.5'W 118°10'W 118°9.5'W 118°8'W 118°7.5'W 118°7'W

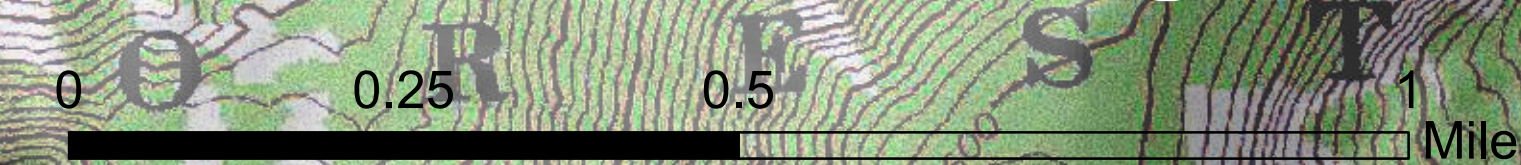


Bear Butte Fire
OPS Map
OR-WWF-629
Datum: North American 1983
08/13/2017
Approx: 499 ac



- Drop Point
- Lookout
- Sling Site
- Spot Fire
- Helispot
- Repeater
- Uncontrolled Fire Edge
- Completed Dozer Line
- Completed Line
- Hand Line
- Road as Completed Line
- Areas to avoid
- PowerLine
- Trail

Logistics Repeater



118°14'W 118°13.5'W 118°13'W 118°12.5'W 118°11'W 118°11.5'W 118°10.5'W 118°10'W 118°9.5'W 118°8'W 118°7.5'W 118°7'W