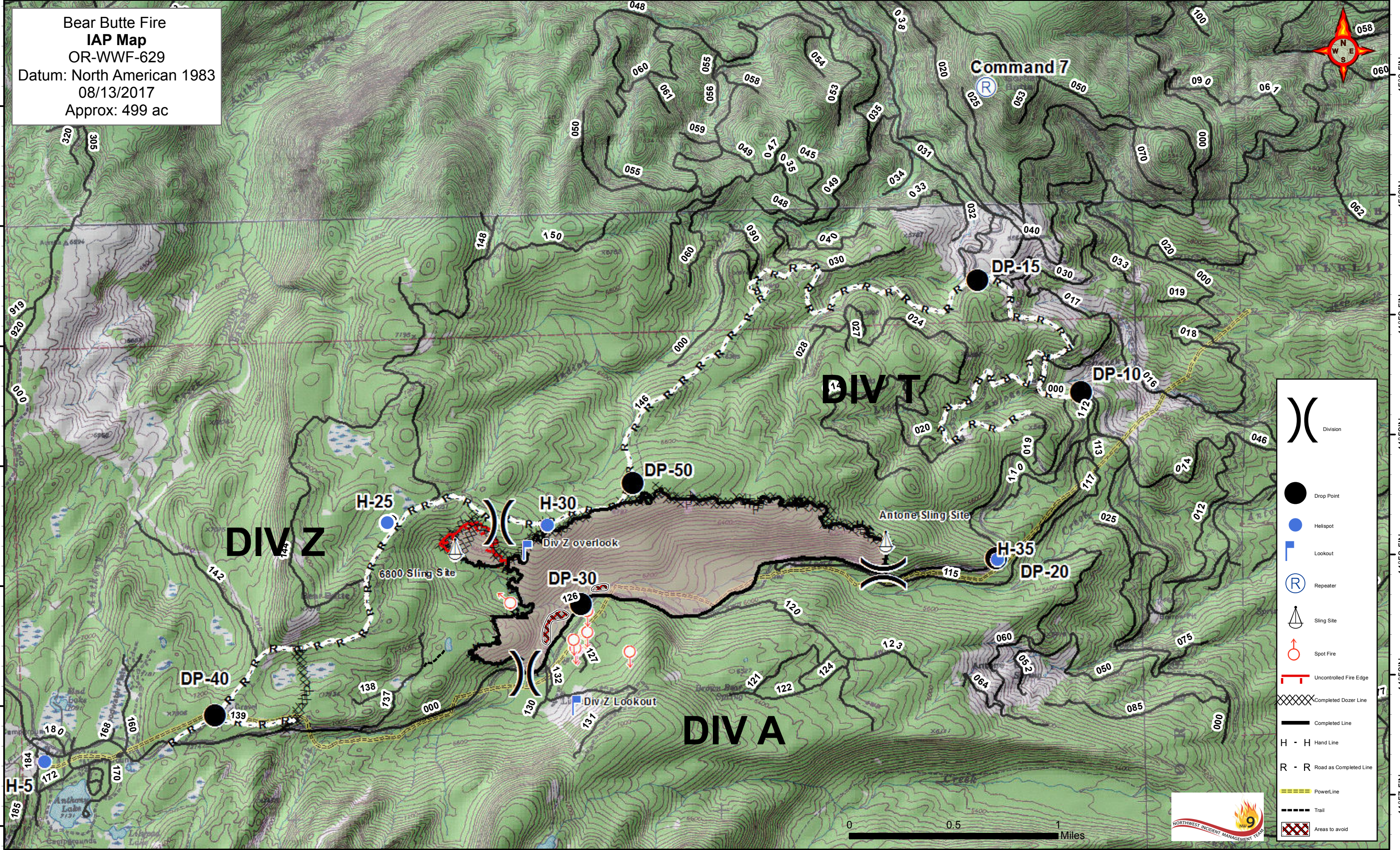


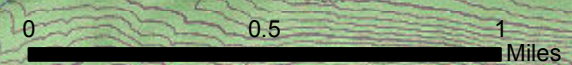
118°14'W 118°13.5'W 118°13'W 118°12.5'W 118°11'W 118°11.5'W 118°11'W 118°10.5'W 118°10'W 118°9.5'W 118°8'W 118°8.5'W 118°8'W 118°7.5'W 118°7'W 118°6.5'W 118°6'W



Bear Butte Fire  
IAP Map  
OR-WWF-629  
Datum: North American 1983  
08/13/2017  
Approx: 499 ac



- Division
- Drop Point
- Helispot
- Lookout
- Repeater
- Sling Site
- Spot Fire
- Uncontrolled Fire Edge
- Completed Dozer Line
- Completed Line
- H - H Hand Line
- R - R Road as Completed Line
- PowerLine
- Trail
- Areas to avoid



118°14'W 118°13.5'W 118°13'W 118°12.5'W 118°11'W 118°11.5'W 118°11'W 118°10.5'W 118°10'W 118°9.5'W 118°8'W 118°8.5'W 118°8'W 118°7.5'W 118°7'W 118°6.5'W 118°6'W

45°0'N  
45°0'N  
44°59'5"N  
44°59'5"N  
44°58'5"N  
44°58'5"N  
44°57'5"N

45°0'N  
45°0'N  
44°59'5"N  
44°59'5"N  
44°58'5"N  
44°58'5"N  
44°57'5"N