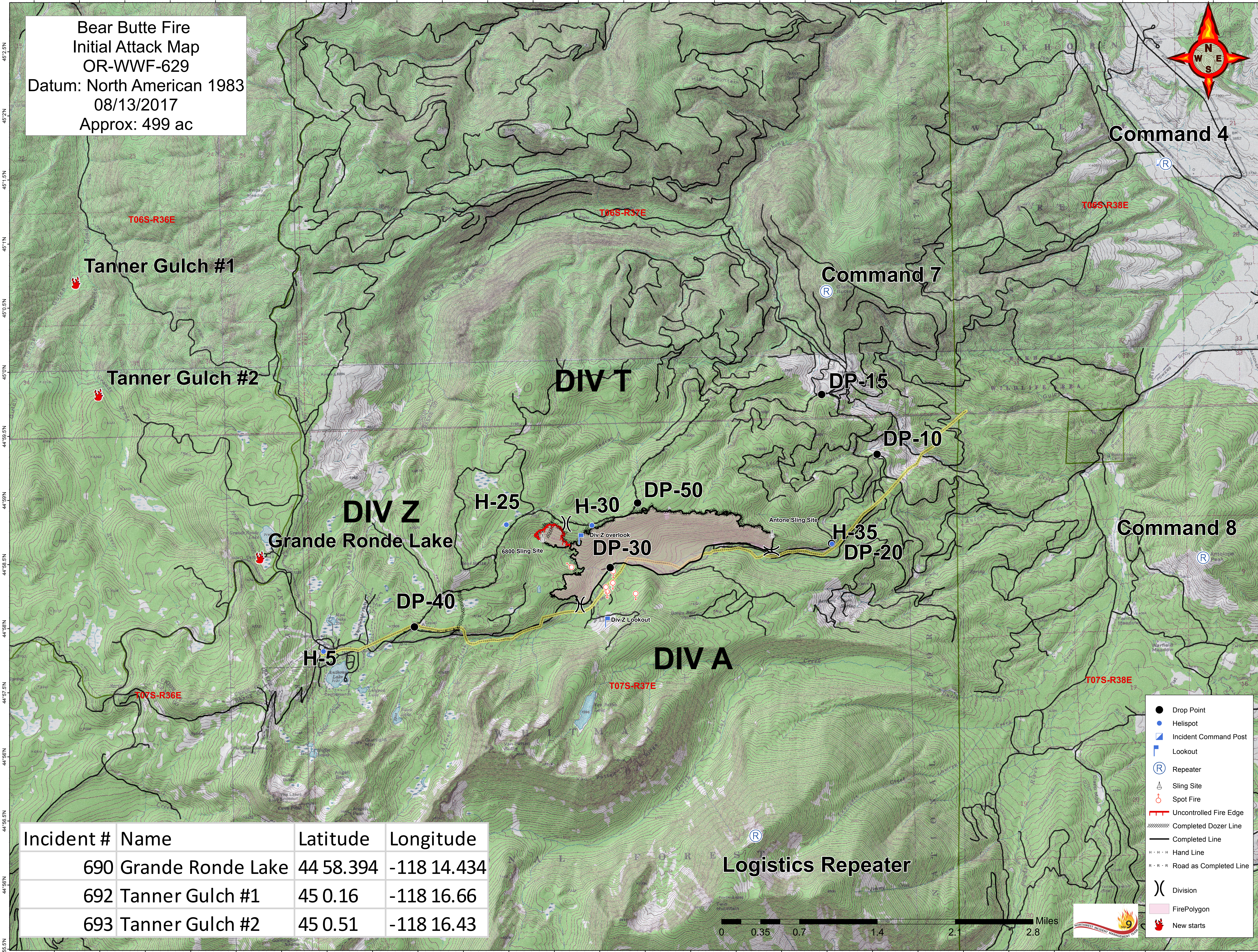
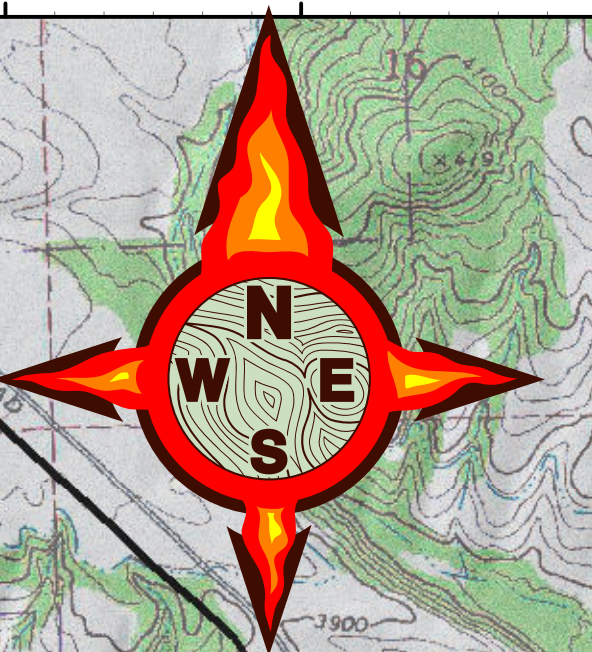


118°17'W 118°16.5'W 118°16'W 118°15.5'W 118°15'W 118°14.5'W 118°14'W 118°13.5'W 118°13'W 118°12.5'W 118°11'W 118°11.5'W 118°11'W 118°10.5'W 118°10'W 118°9.5'W 118°8'W 118°8.5'W 118°8'W 118°7.5'W 118°7'W 118°6.5'W 118°6'W 118°5.5'W 118°5'W 118°4.5'W 118°4'W 118°3.5'W

**Bear Butte Fire**  
**Initial Attack Map**  
**OR-WWF-629**  
**Datum: North American 1983**  
**08/13/2017**  
**Approx: 499 ac**



**Command 4**

**Command 7**

**Command 8**

**DIV T**

**DIV Z**

**DIV A**

**Grande Ronde Lake**

**Tanner Gulch #1**

**Tanner Gulch #2**

**DP-15**

**DP-10**

**DP-50**

**H-25**

**H-30**

**H-35**

**DP-30**

**DP-20**

**DP-40**

**H-5**

**T07S-R36E**

**T07S-R37E**

**T07S-R38E**

**Logistics Repeater**

Incident #	Name	Latitude	Longitude
690	Grande Ronde Lake	44 58.394	-118 14.434
692	Tanner Gulch #1	45 0.16	-118 16.66
693	Tanner Gulch #2	45 0.51	-118 16.43

- Drop Point
- Helispot
- ▣ Incident Command Post
- ▣ Lookout
- Ⓡ Repeater
- △ Sling Site
- ⚡ Spot Fire
- Uncontrolled Fire Edge
- ▨ Completed Dozer Line
- Completed Line
- · · Hand Line
- R · R Road as Completed Line
- ) Division
- Fire Polygon
- 🔥 New starts



118°17'W 118°16.5'W 118°16'W 118°15.5'W 118°15'W 118°14.5'W 118°14'W 118°13.5'W 118°13'W 118°12.5'W 118°11'W 118°11.5'W 118°11'W 118°10.5'W 118°10'W 118°9.5'W 118°8'W 118°8.5'W 118°8'W 118°7.5'W 118°7'W 118°6.5'W 118°6'W 118°5.5'W 118°5'W 118°4.5'W 118°4'W 118°3.5'W