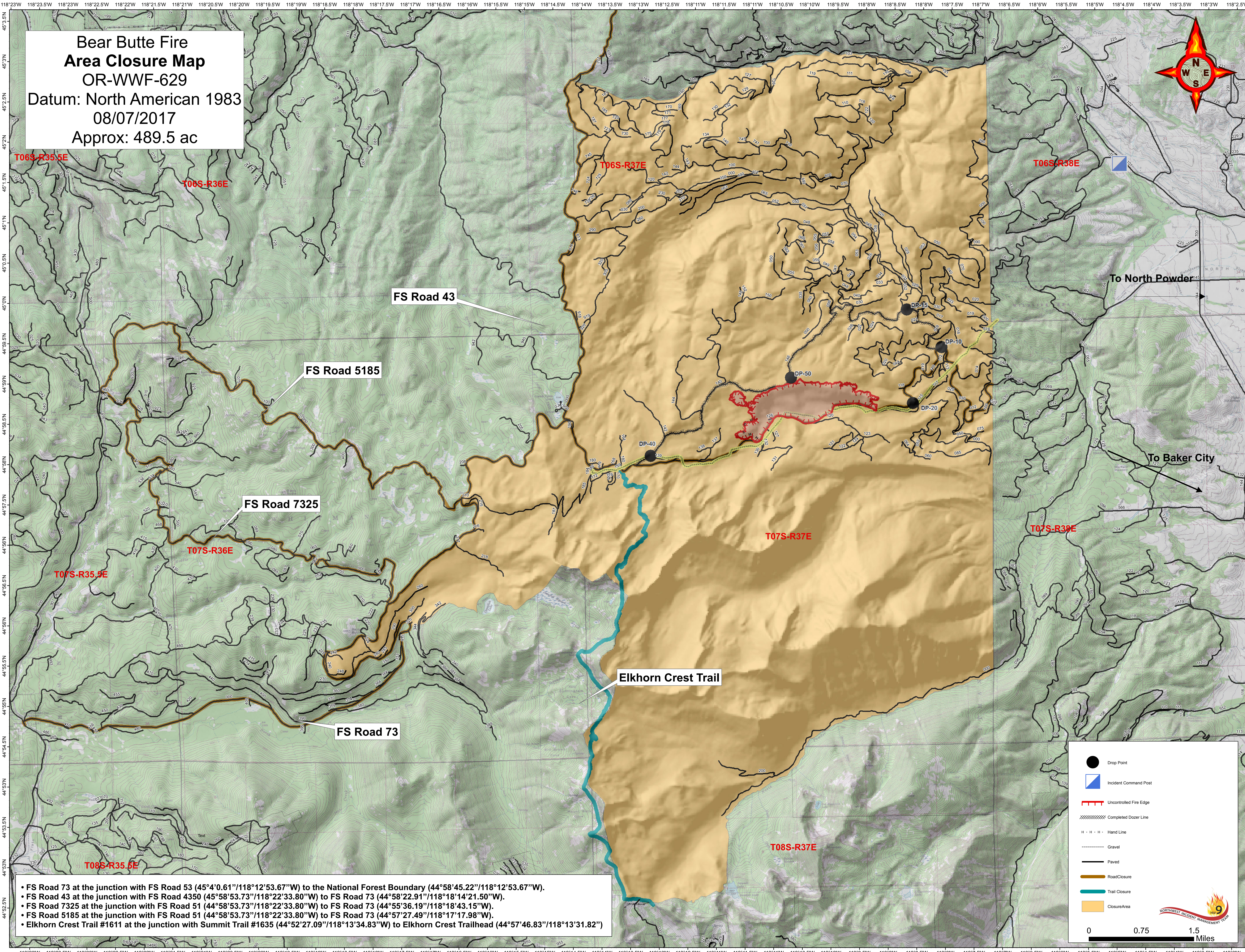
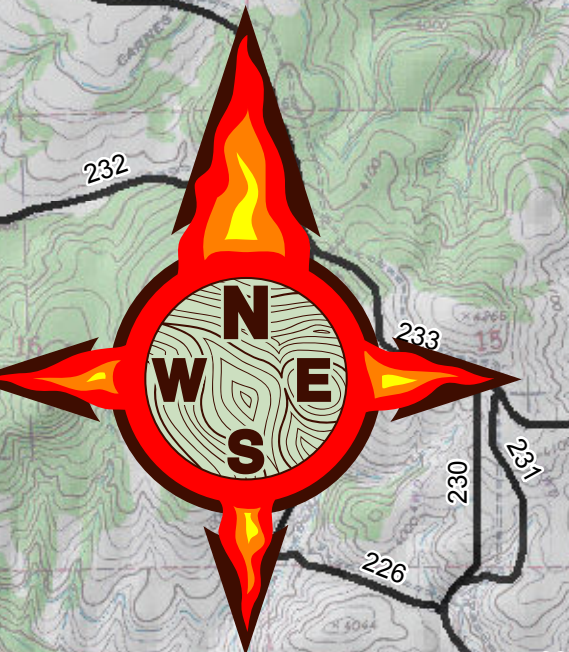


**Bear Butte Fire
Area Closure Map**
OR-WWF-629
Datum: North American 1983
08/07/2017
Approx: 489.5 ac



- FS Road 73 at the junction with FS Road 53 (45°4'0.61"/118°12'53.67"W) to the National Forest Boundary (44°58'45.22"/118°12'53.67"W).
- FS Road 43 at the junction with FS Road 4350 (45°58'53.73"/118°22'33.80"W) to FS Road 73 (44°58'22.91"/118°18'14'21.50"W).
- FS Road 7325 at the junction with FS Road 51 (44°58'53.73"/118°22'33.80"W) to FS Road 73 (44°55'36.19"/118°18'43.15"W).
- FS Road 5185 at the junction with FS Road 51 (44°58'53.73"/118°22'33.80"W) to FS Road 73 (44°57'27.49"/118°17'17.98"W).
- Elkhorn Crest Trail #1611 at the junction with Summit Trail #1635 (44°52'27.09"/118°13'34.83"W) to Elkhorn Crest Trailhead (44°57'46.83"/118°13'31.82")

	Drop Point
	Incident Command Post
	Uncontrolled Fire Edge
	Completed Dozer Line
	Hand Line
	Gravel
	Paved
	Road Closure
	Trail Closure
	Closure Area

0 0.75 1.5 Miles