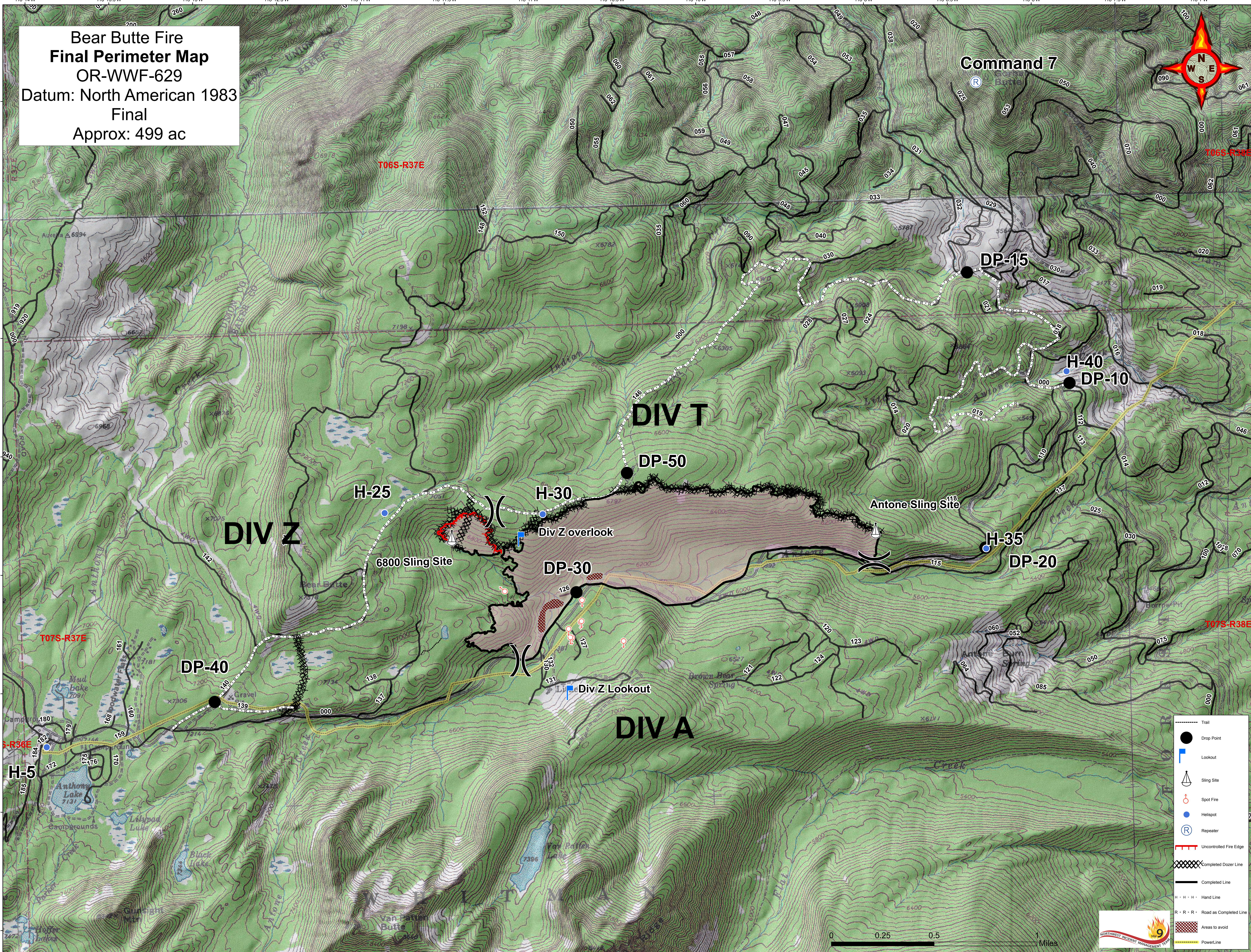
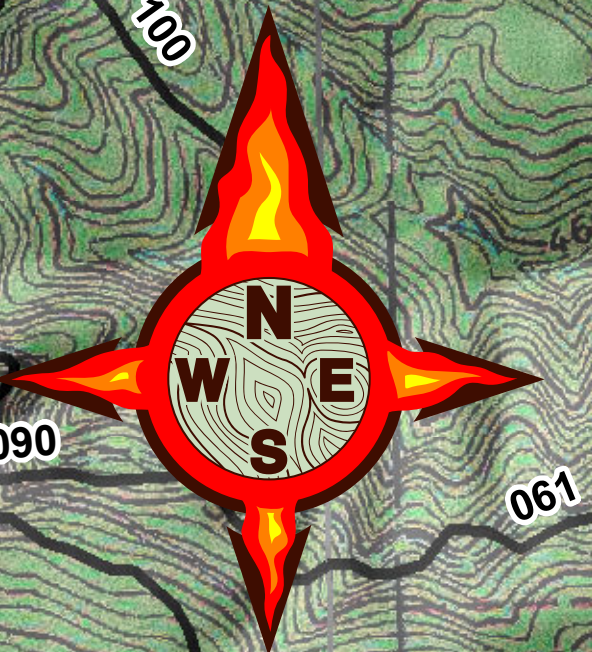


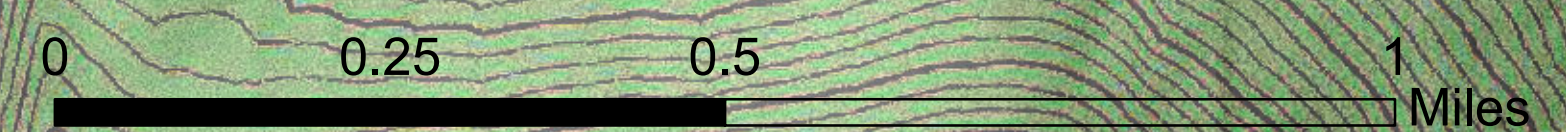
118°14'W 118°13.5'W 118°13'W 118°12.5'W 118°11'W 118°11.5'W 118°11'W 118°10.5'W 118°10'W 118°9.5'W 118°9'W 118°8.5'W 118°8'W 118°7.5'W 118°7'W

45°0'SN 44°59'SN 44°58'SN 44°57'SN 44°56'SN 44°55'SN 44°54'SN 44°53'SN 44°52'SN 44°51'SN 44°50'SN

Bear Butte Fire
Final Perimeter Map
OR-WWF-629
Datum: North American 1983
Final
Approx: 499 ac



	Trail
	Drop Point
	Lookout
	Sling Site
	Spot Fire
	Helispot
	Repeater
	Uncontrolled Fire Edge
	Completed Dozer Line
	Completed Line
	Hand Line
	Road as Completed Line
	Areas to avoid
	PowerLine



118°14'W 118°13.5'W 118°13'W 118°12.5'W 118°11'W 118°11.5'W 118°11'W 118°10.5'W 118°10'W 118°9.5'W 118°9'W 118°8.5'W 118°8'W 118°7.5'W 118°7'W