

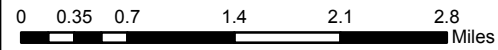
122°26'30"W 122°25'30"W 122°24'30"W 122°23'30"W 122°22'30"W 122°21'30"W 122°20'30"W 122°19'30"W 122°18'30"W 122°17'30"W 122°16'30"W 122°15'30"W 122°14'30"W 122°13'30"W 122°12'30"W 122°11'30"W

# Blanket Creek OR-RSF-000371 IAP Map 8/7/2017 0600

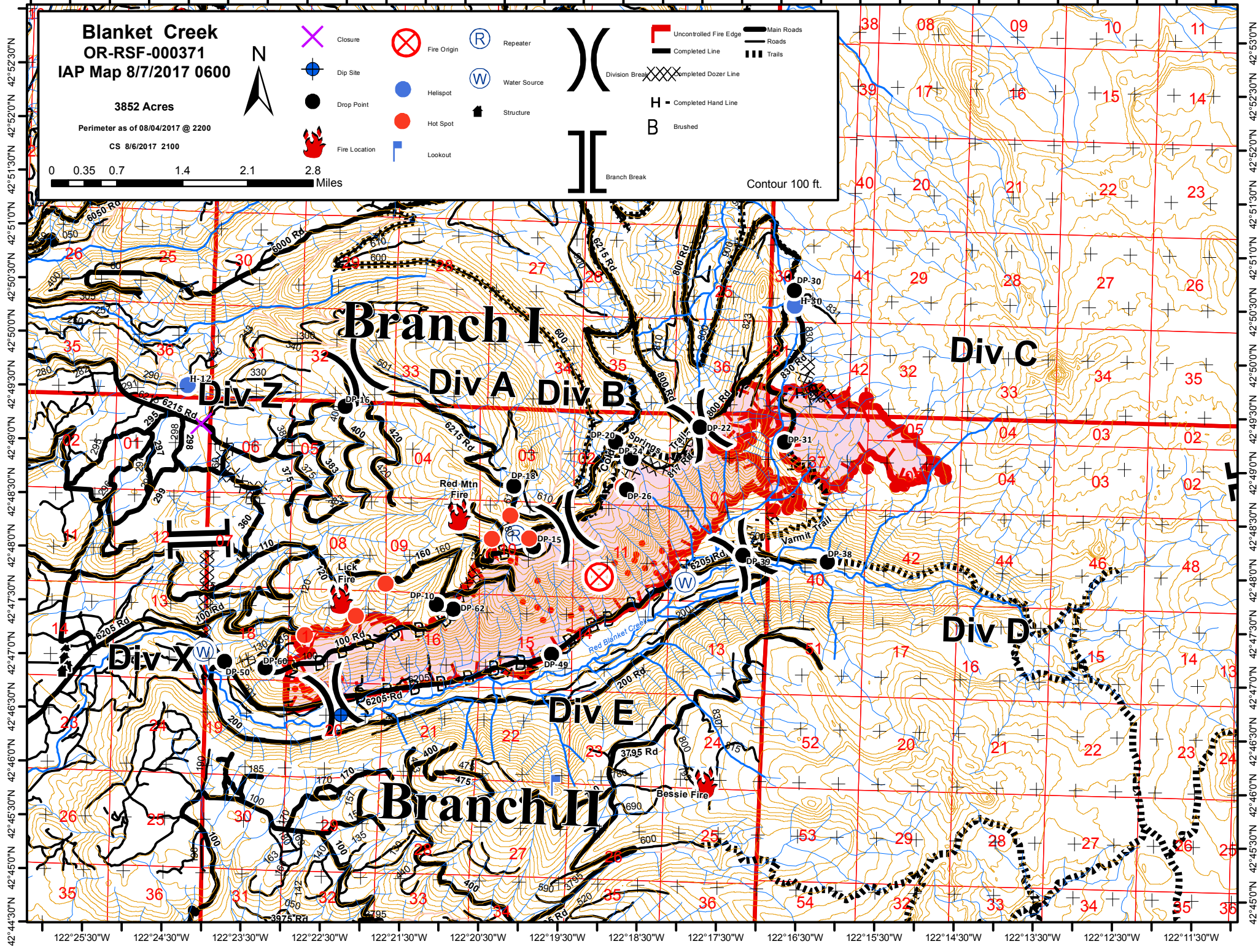
3852 Acres

Perimeter as of 08/04/2017 @ 2200

CS 8/6/2017 2100



	Closure		Fire Origin		Repeater		Uncontrolled Fire Edge		Main Roads
	Dip Site		Helispot		Water Source		Completed Line		Roads
	Drop Point		Hot Spot		Structure		Completed Dozer Line		Trails
	Fire Location		Lookout		Branch Break		Completed Hand Line		Brushed



42°44'30"N 42°45'00"N 42°45'30"N 42°46'00"N 42°46'30"N 42°47'00"N 42°47'30"N 42°48'00"N 42°48'30"N 42°49'00"N 42°49'30"N 42°50'00"N 42°50'30"N 42°51'00"N 42°51'30"N 42°52'00"N 42°52'30"N