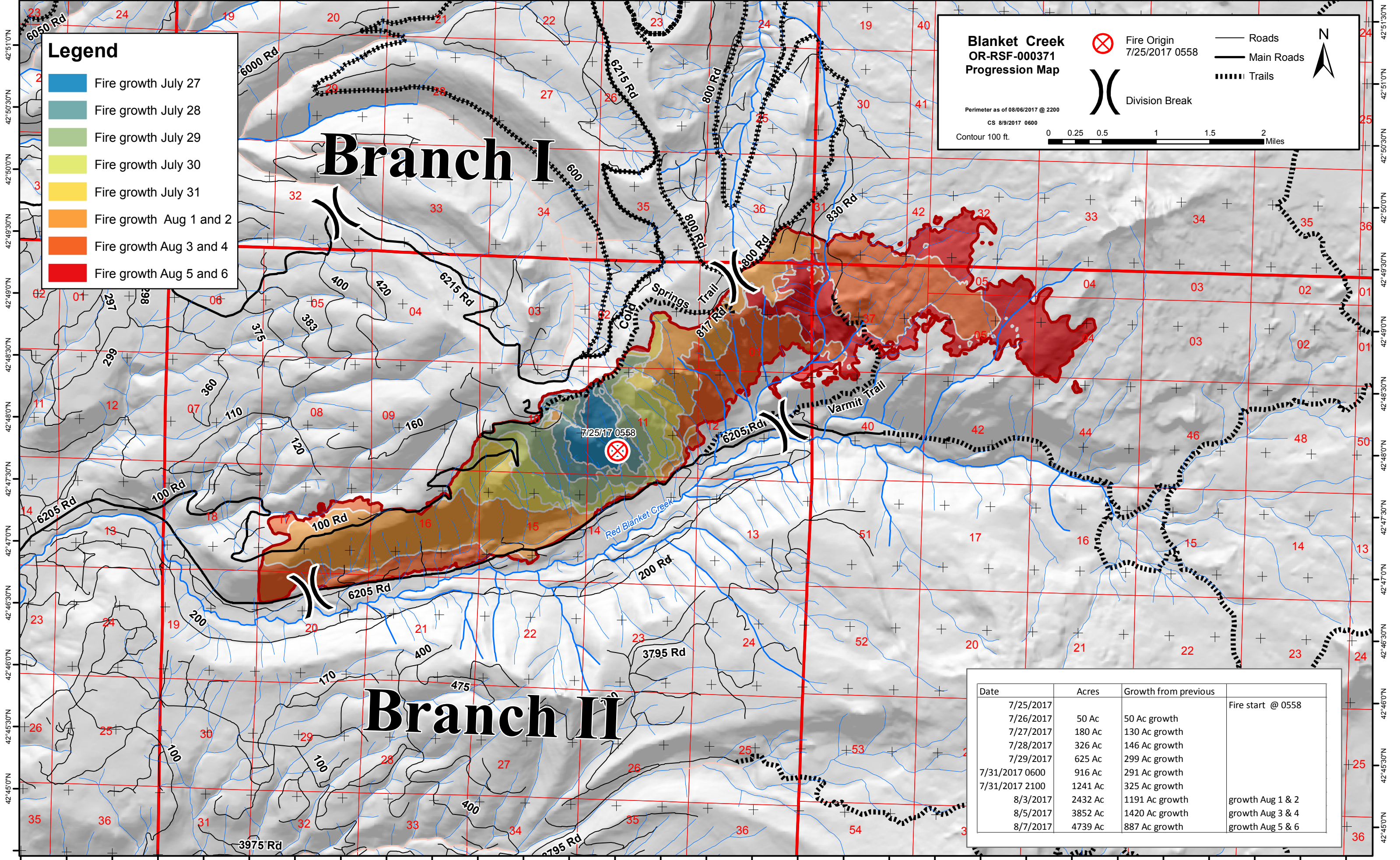


122°25'30"W 122°25'0"W 122°24'30"W 122°24'0"W 122°23'30"W 122°23'0"W 122°22'30"W 122°22'0"W 122°21'30"W 122°21'0"W 122°20'30"W 122°20'0"W 122°19'30"W 122°19'0"W 122°18'30"W 122°18'0"W 122°17'30"W 122°17'0"W 122°16'30"W 122°16'0"W 122°15'30"W 122°15'0"W 122°14'30"W 122°14'0"W 122°13'30"W 122°13'0"W 122°12'30"W 122°12'0"W 122°11'30"W 122°11'0"W



**Legend**

- Fire growth July 27
- Fire growth July 28
- Fire growth July 29
- Fire growth July 30
- Fire growth July 31
- Fire growth Aug 1 and 2
- Fire growth Aug 3 and 4
- Fire growth Aug 5 and 6

**Blanket Creek  
OR-RSF-000371  
Progression Map**

Perimeter as of 08/06/2017 @ 2200  
CS 8/9/2017 0600  
Contour 100 ft.

X Fire Origin  
7/25/2017 0558

) Division Break

Roads  
 Main Roads  
 Trails

N

**Branch I**

**Branch II**

Date	Acres	Growth from previous	
7/25/2017			Fire start @ 0558
7/26/2017	50 Ac	50 Ac growth	
7/27/2017	180 Ac	130 Ac growth	
7/28/2017	326 Ac	146 Ac growth	
7/29/2017	625 Ac	299 Ac growth	
7/31/2017 0600	916 Ac	291 Ac growth	growth Aug 1 & 2
7/31/2017 2100	1241 Ac	325 Ac growth	
8/3/2017	2432 Ac	1191 Ac growth	
8/5/2017	3852 Ac	1420 Ac growth	growth Aug 3 & 4
8/7/2017	4739 Ac	887 Ac growth	growth Aug 5 & 6

122°25'30"W 122°25'0"W 122°24'30"W 122°24'0"W 122°23'30"W 122°23'0"W 122°22'30"W 122°22'0"W 122°21'30"W 122°21'0"W 122°20'30"W 122°20'0"W 122°19'30"W 122°19'0"W 122°18'30"W 122°18'0"W 122°17'30"W 122°17'0"W 122°16'30"W 122°16'0"W 122°15'30"W 122°15'0"W 122°14'30"W 122°14'0"W 122°13'30"W 122°13'0"W 122°12'30"W 122°12'0"W 122°11'30"W 122°11'0"W