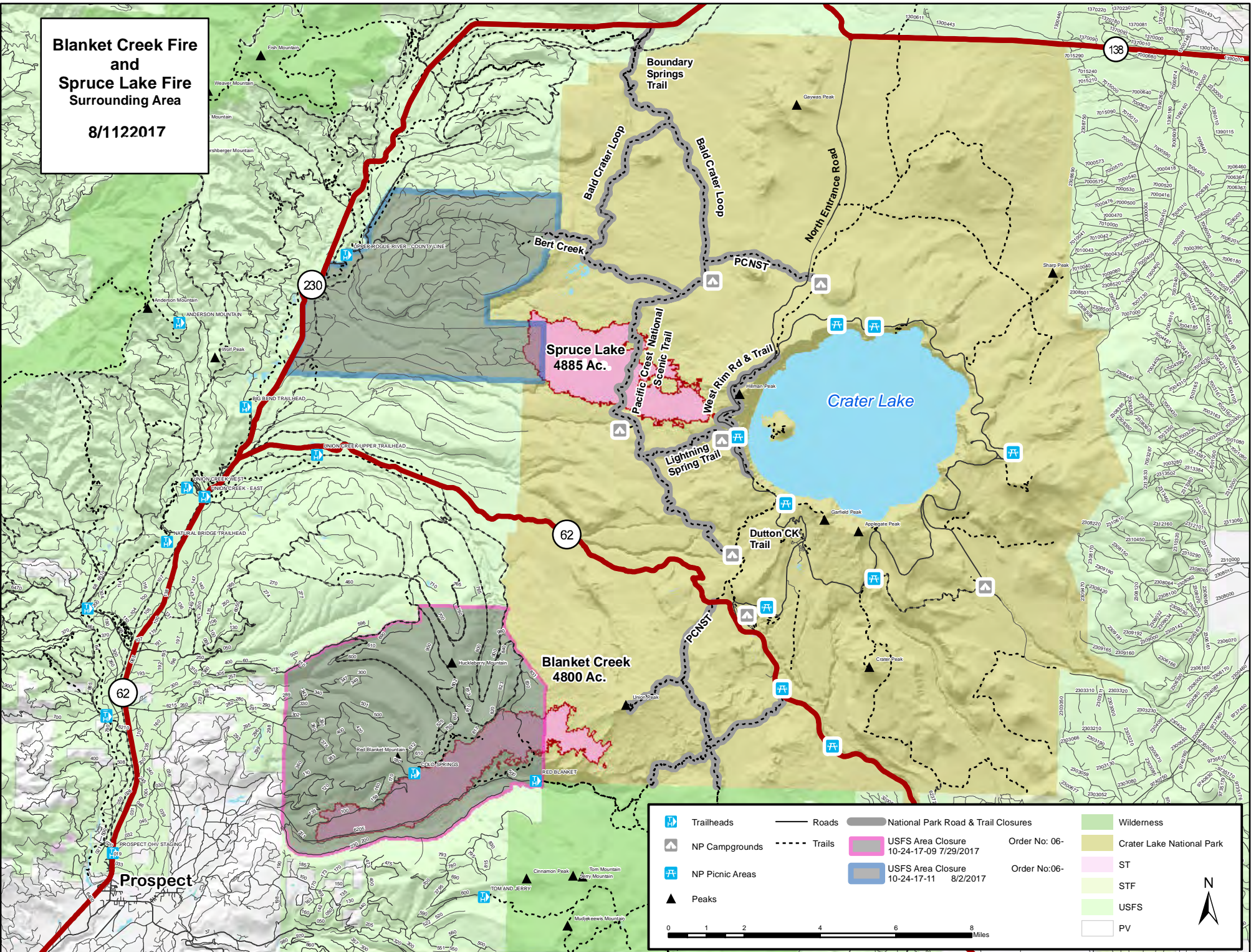


**Blanket Creek Fire
and
Spruce Lake Fire
Surrounding Area**
8/1122017



Trailheads	Roads	National Park Road & Trail Closures	Wilderness
NP Campgrounds	Trails	USFS Area Closure 10-24-17-09 7/29/2017	Order No: 06- Crater Lake National Park
NP Picnic Areas		USFS Area Closure 10-24-17-11 8/2/2017	Order No:06- ST
Peaks			STF
			USFS
			PV

0 1 2 4 6 8 Miles

N