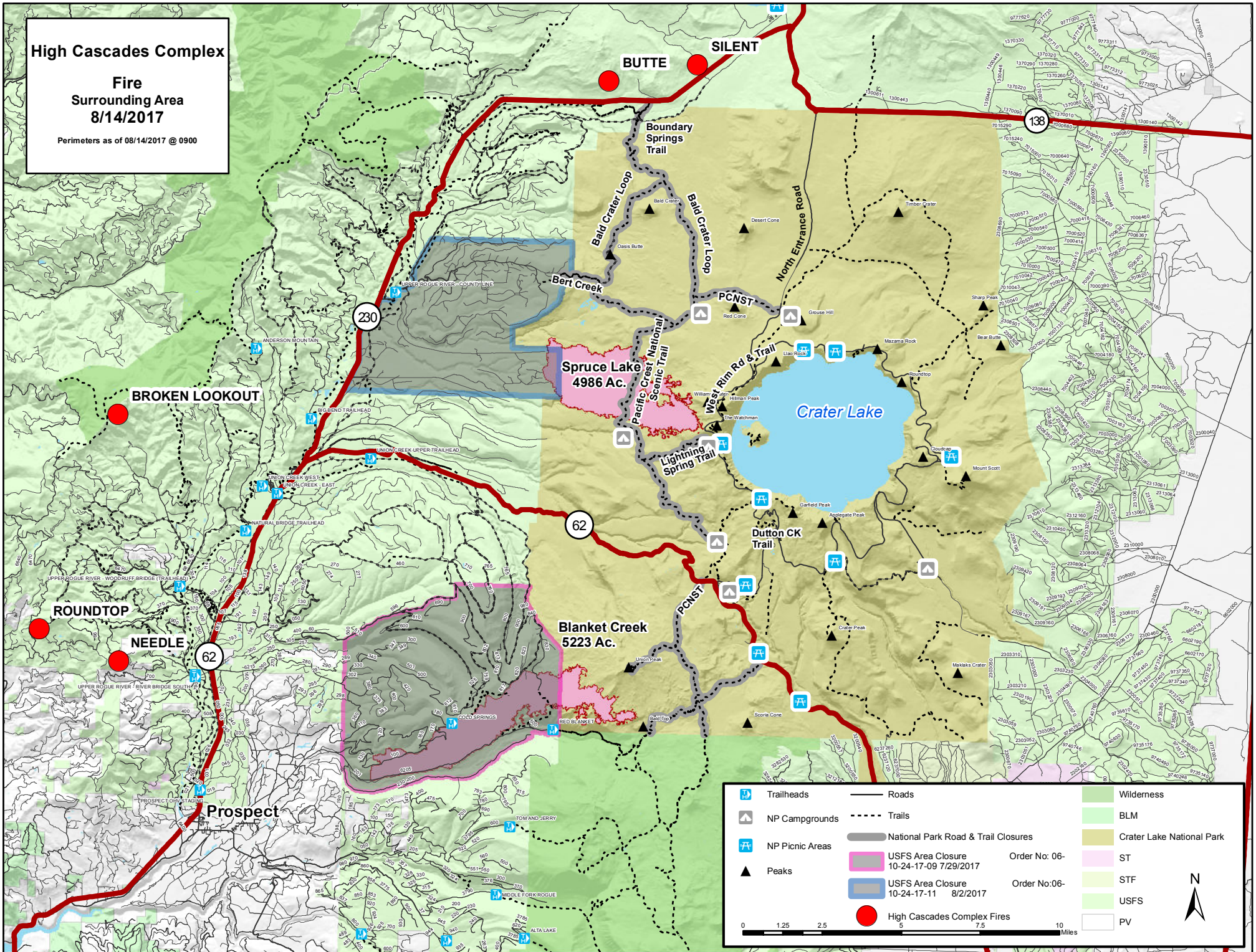


# High Cascades Complex

Fire  
Surrounding Area  
8/14/2017

Perimeters as of 08/14/2017 @ 0900



	Trailheads		Roads		Wilderness
	NP Campgrounds		Trails		BLM
	NP Picnic Areas		National Park Road & Trail Closures		Crater Lake National Park
	Peaks		USFS Area Closure 10-24-17-09 7/29/2017		ST
			USFS Area Closure 10-24-17-11 8/2/2017		STF
			High Cascades Complex Fires		USFS
					PV

Order No: 06-  
Order No:06-

0 1.25 2.5 5 7.5 10 Miles

N