

Div A/B

Div X/Z

Div E

High Cascades Complex
Blanket Creek Incident
IAP Day Shift
August 21, 2017

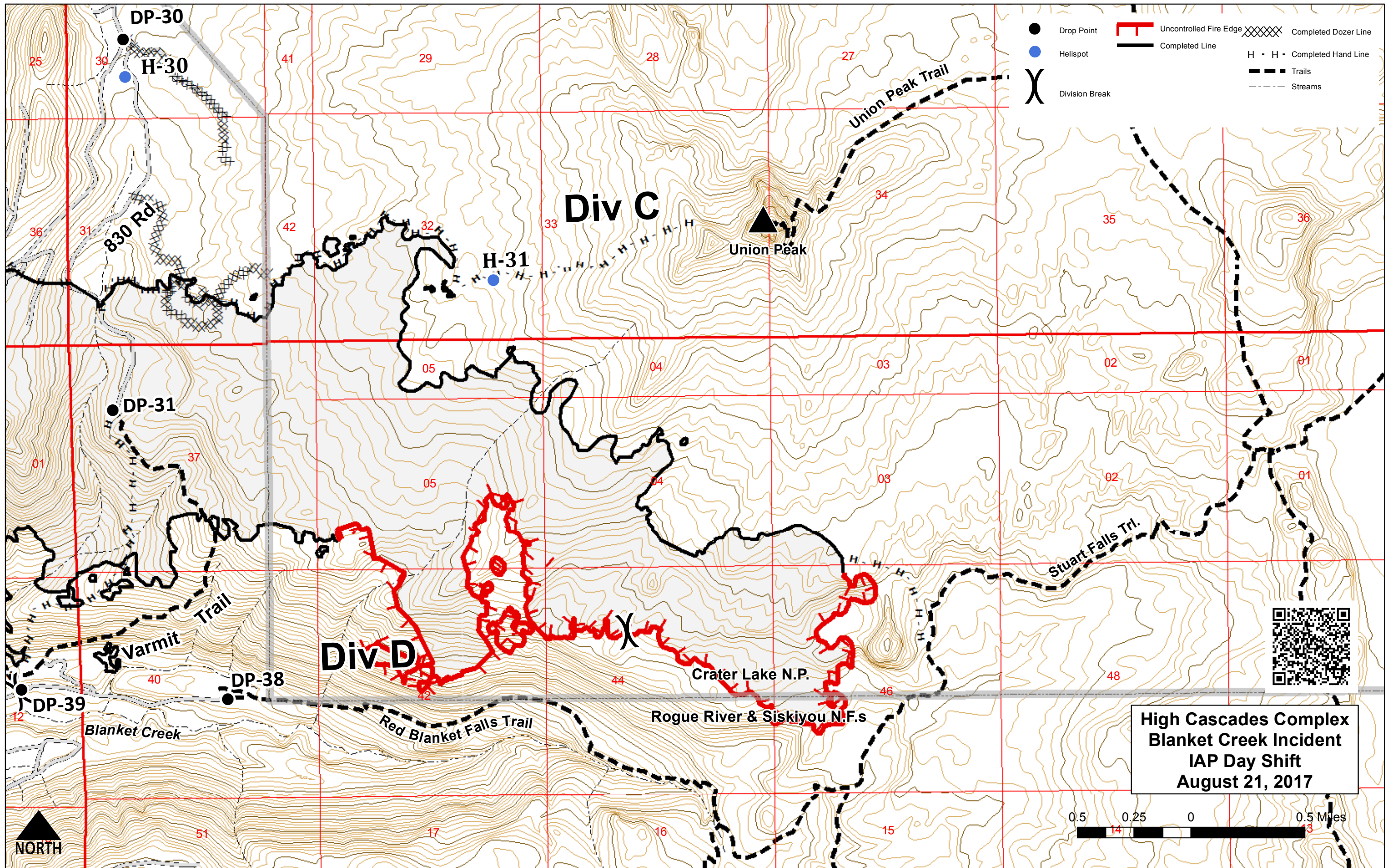
0.5 0.25 0 0.5 Miles

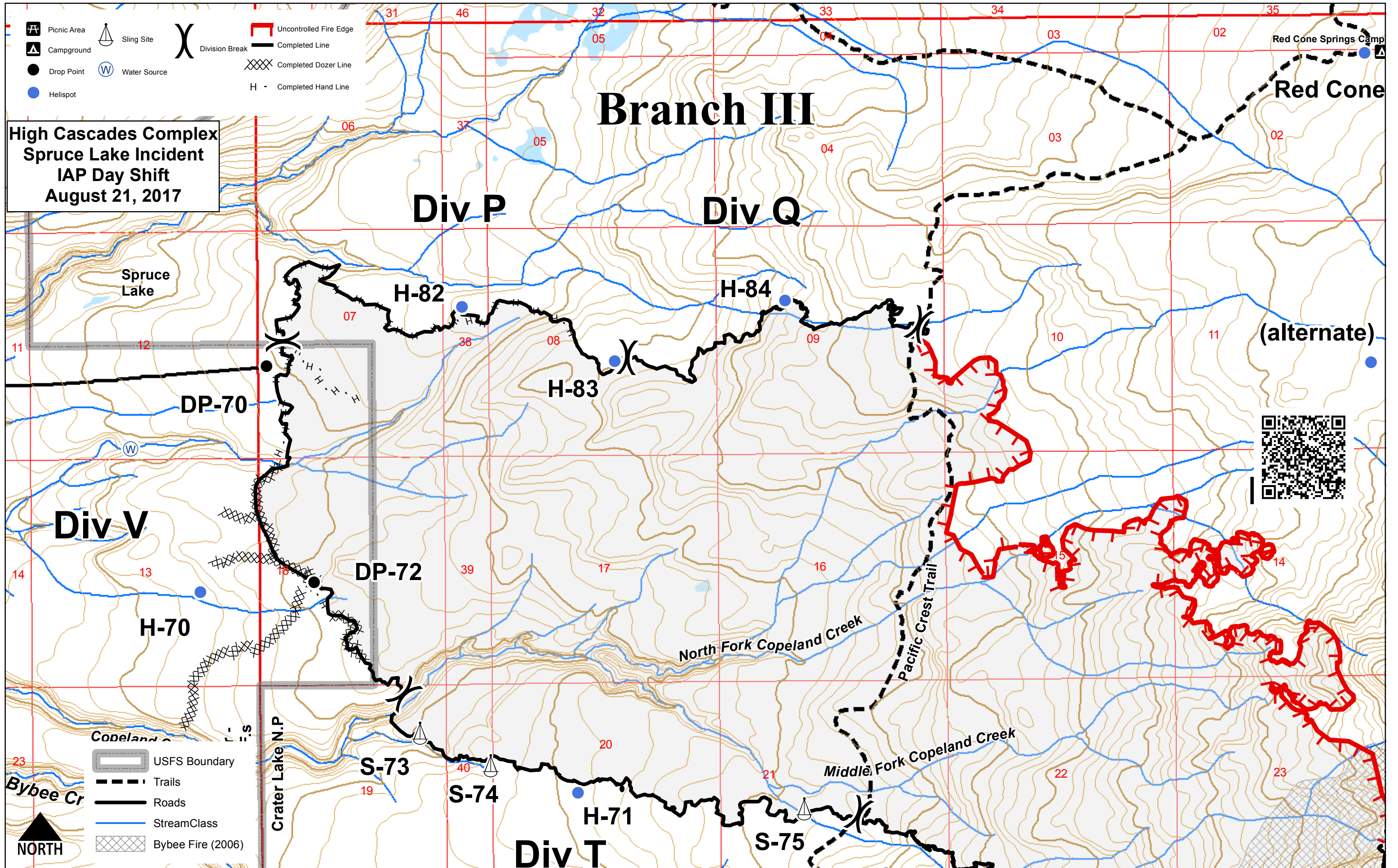
NORTH

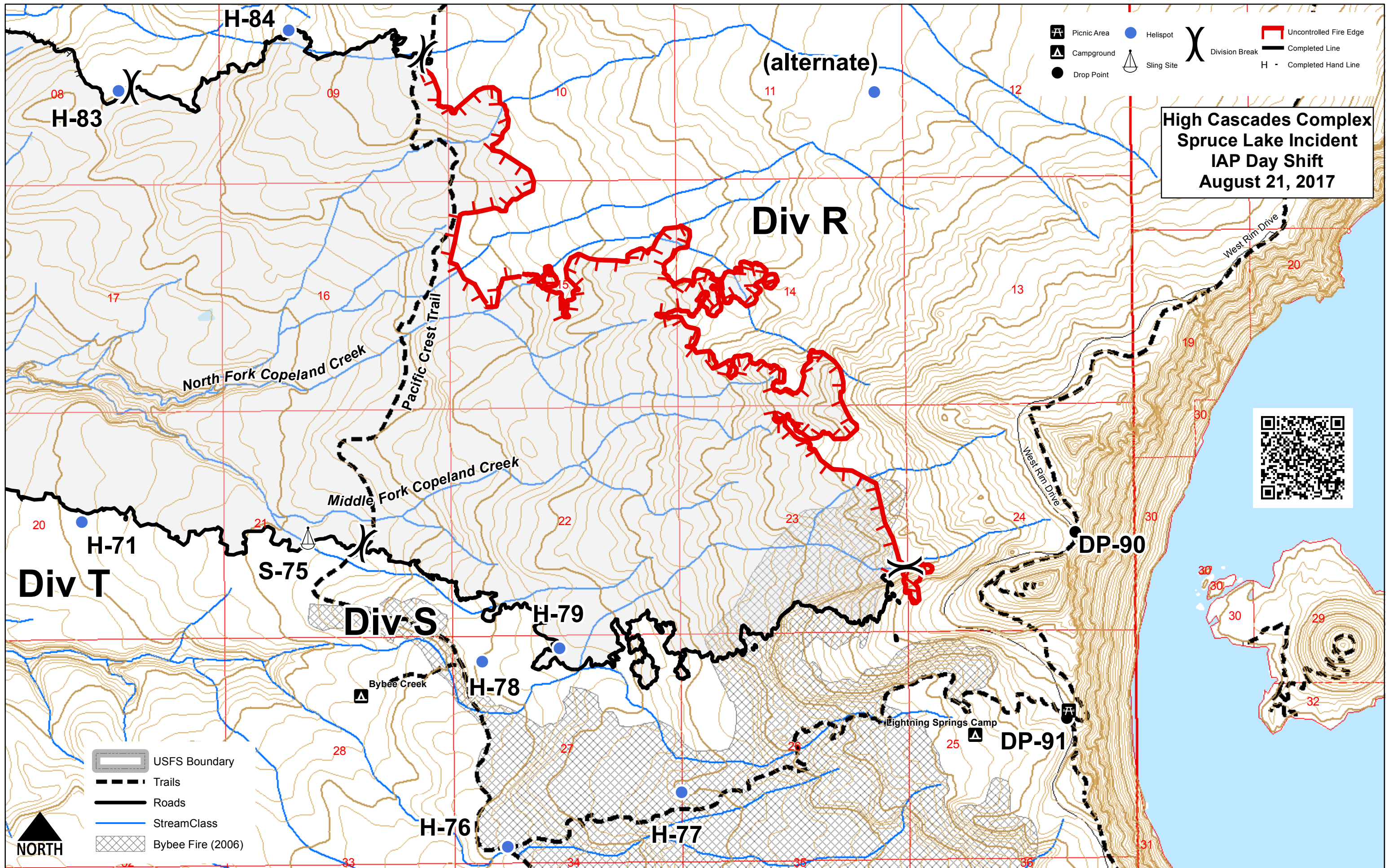
- Drop Point
- Helispot
- Ⓜ Water Source
- ⌘ Division Break

- Completed Line
- ⊗ Completed Dozer Line
- H - H - Completed Hand Line
- R - R - Road as Completed Line
- - - Trails
- - - Streams














**High Cascades Complex
Spruce Lake Incident
IAP Day Shift
August 21, 2017**



-  Picnic Area
-  Campground
-  Drop Point
-  Helispot
-  Sling Site
-  Division Break
-  Uncontrolled Fire Edge
-  Completed Line
-  Completed Hand Line

-  USFS Boundary
-  Trails
-  Roads
-  StreamClass
-  Bybee Fire (2006)



High Cascades Complex
Sherwood Fire

Operations

8/21/2017 Data



- Dis Point
- Helport
- P Pump
- ▭ Thin Layer
- ▭ Sherwood Field
- ▭ Highways
- ▭ Lower SF Paths
- ▭ Main Roads
- ▭ Sherwood/Forest/Highways
- ▭ Sherwood/Sherwood/Highways

Coyote Spike

DP-61

DP-101

Sherwood

S1

S2

S3

S4

S5

S6

Sherwood Butte

No Retardant



High Cascades Complex Travel Map

