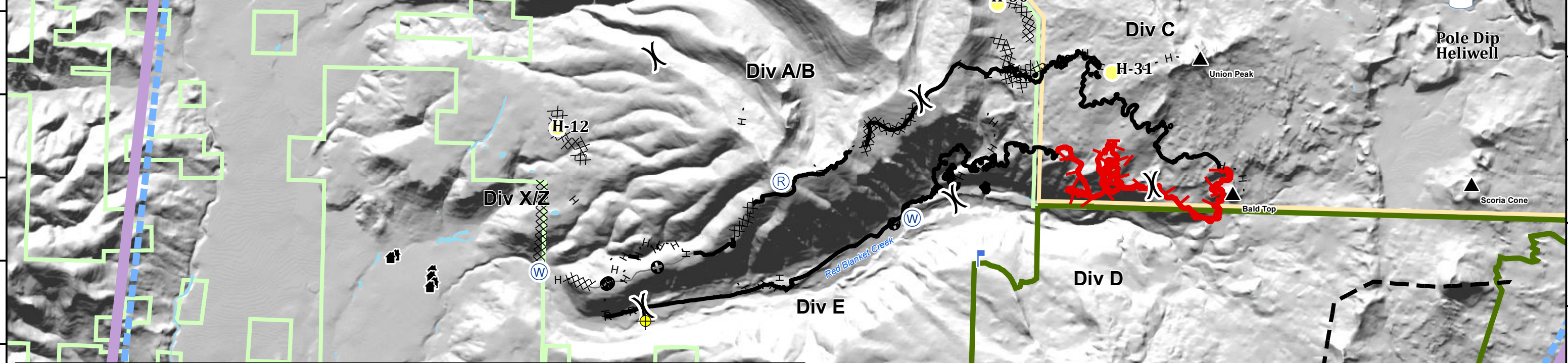


122°33'0"W 122°32'0"W 122°31'0"W 122°30'0"W 122°29'0"W 122°28'0"W 122°27'0"W 122°26'0"W 122°25'0"W 122°24'0"W 122°23'0"W 122°22'0"W 122°21'0"W 122°20'0"W 122°19'0"W 122°18'0"W 122°17'0"W 122°16'0"W 122°15'0"W 122°14'0"W 122°13'0"W 122°12'0"W 122°11'0"W 122°10'0"W 122°9'0"W 122°8'0"W

Label	Latitude	Longitude	Type
Helibase	42° 44.653	122° 29.203	All
Red Dam Heliwell	42° 45.180	122° 26.606	All
Hamaker Heliwell	43° 03.840	122° 19.436	All
Pole Dip Heliwell	42° 50.671	122° 09.031	All
Bridge Dip Site	43° 0.052	122° 22.407	All
Red Blanket Creek Dip	42° 46.51	122° 22.31	
Dip Site	42° 45.485	122° 26.377	All
Dip Site	43° 00.18	122° 22.44	All
Dip Site	43° 00.315	122° 22.192	All
Red Cone Helispot	42° 59.640	122° 11.192	Type 2 or 3
Alternate	42° 58.458	122° 11.173	Type 2 or 3
H-12	42° 48.794	122° 23.844	???
H-30	42° 50.447	122° 16.723	???
H-31	42° 49.658	122° 14.820	approved Type 2
H-70	42° 57.621	122° 17.271	Type 3 ONLY
H-71	42° 56.842	122° 15.318	approved Type 2
H-82	42° 58.669	122° 15.975	
H-83	42° 58.489	122° 15.107	approved Type 3
H-76	42° 55.586	122° 13.177	
H-77	42° 55.788	122° 12.211	
H-78	42° 56.295	122° 13.241	
H-79	42° 56.365	122° 12.885	
H-84	42° 58.715	122° 14.212	
Sling 73	42° 57.075	122° 16.137	
Sling 74	42° 56.948	122° 15.770	
Sling 75	42° 56.773	122° 14.142	
Mount Bailey Repeater	43° 9.306	122° 13.206	Type II and III Helicopters
Huckleberry Repeater	42° 51.117	122° 118.926	Type II and III Helicopters
Coyote Spike	43° 7.776	122° 16.206	Type II and III Helicopters
Smart Pump	43° 7.238	122° 15.267	
I.C.P. Helispot	43° 7' 39.72	122° 8' 43.8	



**High Cascades Complex
Blanket Creek Fire
Pilot Map**

08/21/2017

Uncontrolled Fire Edge	Dip Site	Lookout	Repeater	Sky Lakes Wilderness
Completed Line	Helibase	Value at Risk	Water Source	Crater Lake National Park
Completed Dozer Line	Helispot	Division Break	USFS	
H - H Completed Hand Line				

0 2.5 5 10 Miles

N



122°32'0"W 122°31'0"W 122°30'0"W 122°29'0"W 122°28'0"W 122°27'0"W 122°26'0"W 122°25'0"W 122°24'0"W 122°23'0"W 122°22'0"W 122°21'0"W 122°20'0"W 122°19'0"W 122°18'0"W 122°17'0"W 122°16'0"W 122°15'0"W 122°14'0"W 122°13'0"W 122°12'0"W 122°11'0"W 122°10'0"W 122°9'0"W 122°8'0"W