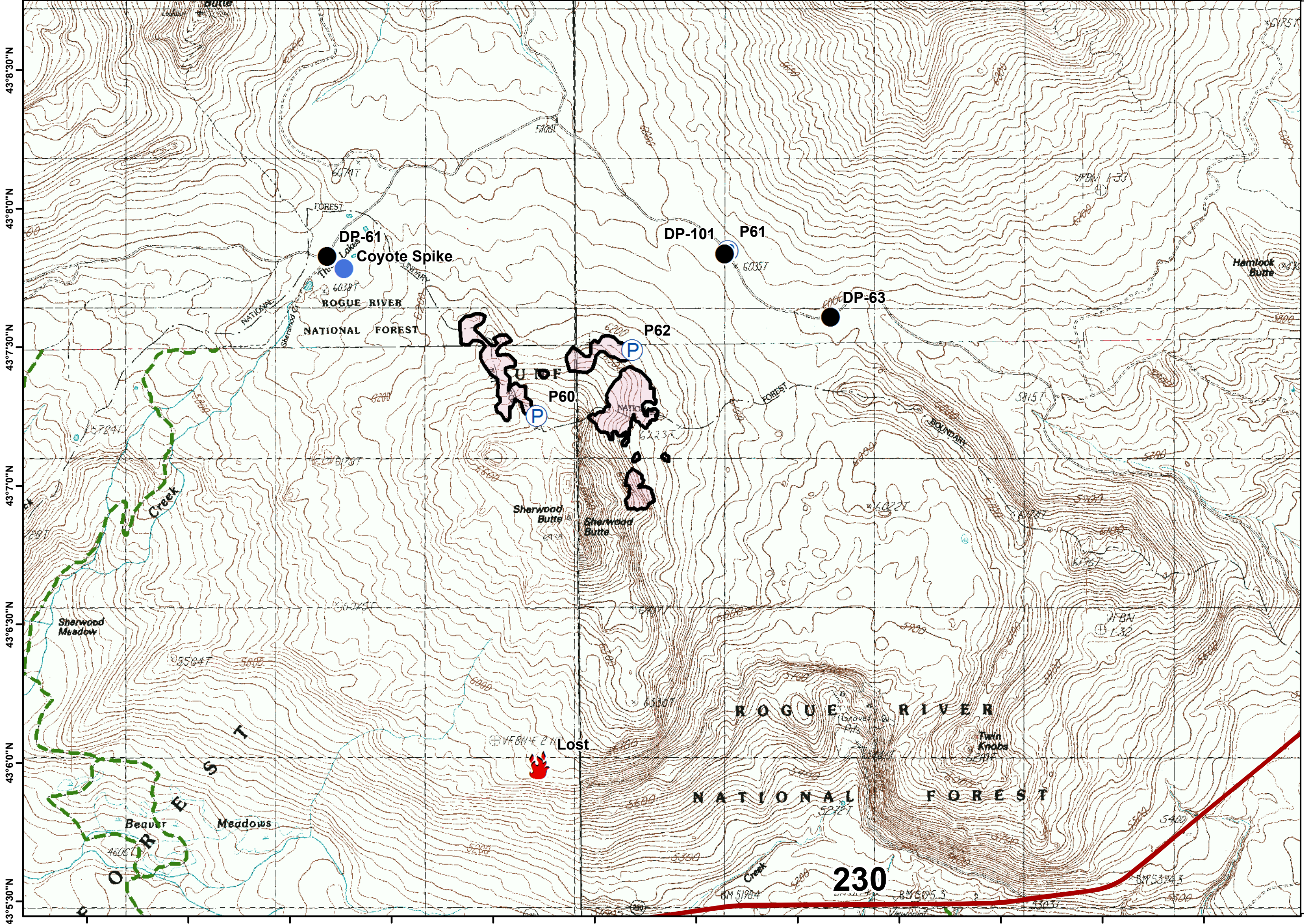


122°17'30"W 122°17'0"W 122°16'30"W 122°16'0"W 122°15'30"W 122°15'0"W 122°14'30"W 122°14'0"W 122°13'30"W 122°13'0"W 122°12'30"W 122°12'0"W 122°11'30"W












Page : 1SH

# Sherwood

High Cascades Cplx IAP

August 26, 2017



-  highways
-  Drop Point
-  Fire Location
-  Helispot
-  Pump
-  Completed Line
-  FirePolygon
-  USFS
-  Trails

