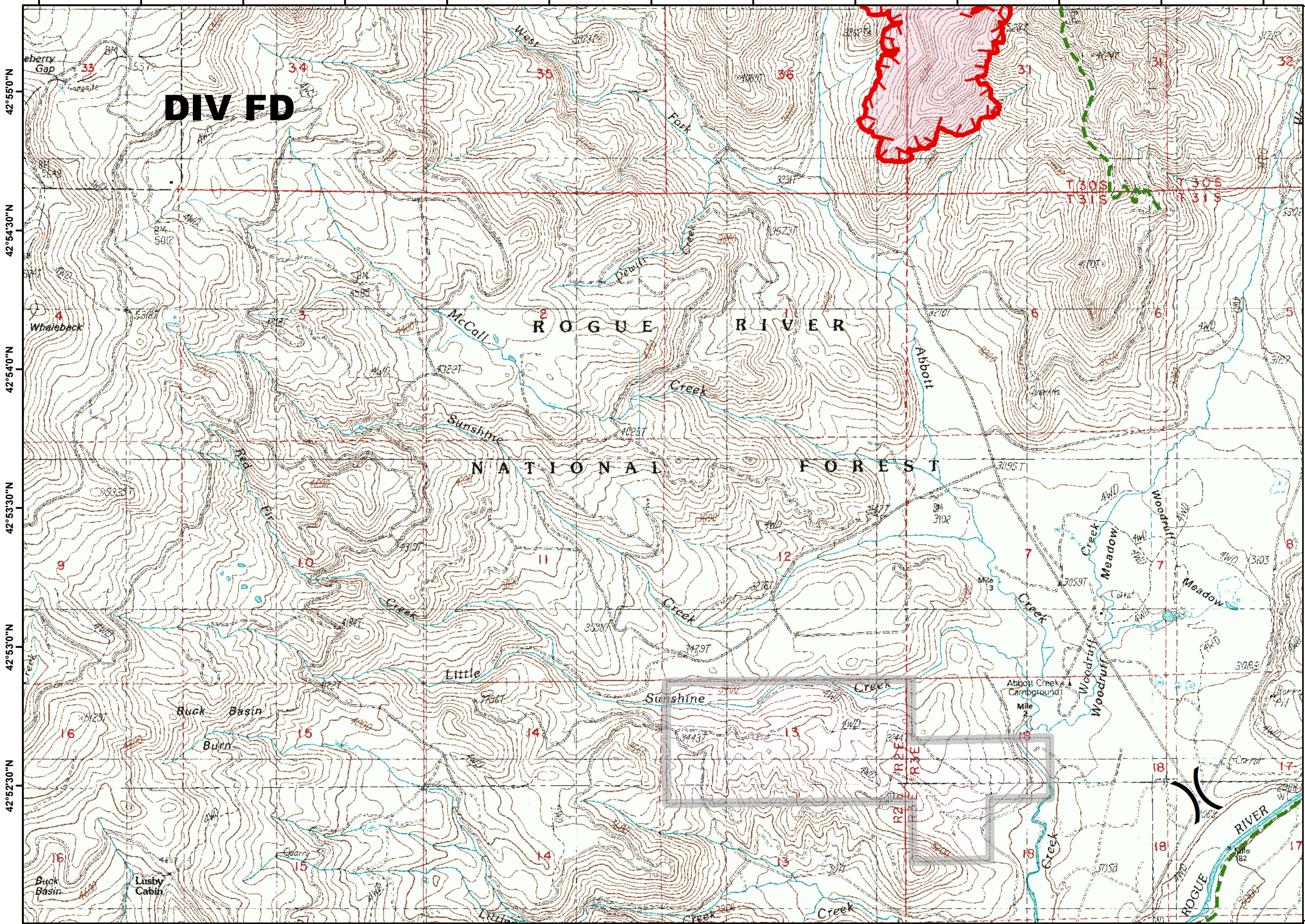


122°35'30"W 122°35'0"W 122°34'30"W 122°34'0"W 122°33'30"W 122°33'0"W 122°32'30"W 122°32'0"W 122°31'30"W 122°31'0"W 122°30'30"W 122°30'0"W 122°29'30"W



DIV FD

ROGUE RIVER

NATIONAL FOREST







Page : 5W

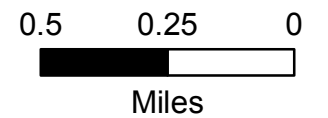
Branch II

High Cascades Cplx
IAP

August 26, 2017



-  Division
-  Uncontrolled Fire Edge
-  FirePolygon
-  USFS
-  Private
-  Trails



122°35'30"W 122°35'0"W 122°34'30"W 122°34'0"W 122°33'30"W 122°33'0"W 122°32'30"W 122°32'0"W 122°31'30"W 122°31'0"W 122°30'30"W 122°30'0"W 122°29'30"W