

122°21'0"W 122°20'30"W 122°20'0"W 122°19'30"W 122°19'0"W 122°18'30"W 122°18'0"W 122°17'30"W 122°17'0"W 122°16'30"W 122°16'0"W 122°15'30"W 122°15'0"W

42°55'30"N  
42°55'0"N  
42°54'30"N  
42°54'0"N  
42°53'30"N  
42°53'0"N

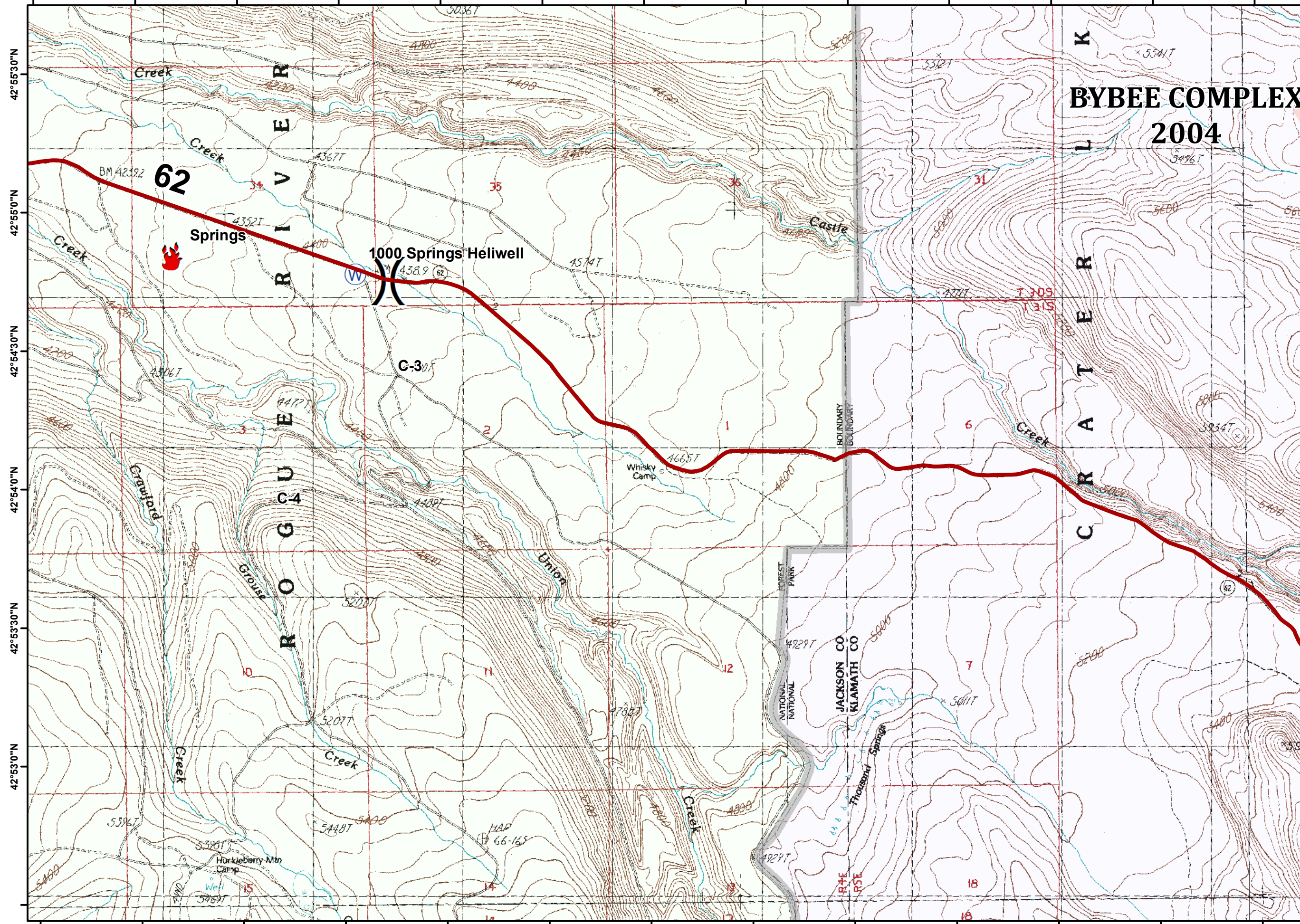
122°21'0"W 122°20'30"W 122°20'0"W 122°19'30"W 122°19'0"W 122°18'30"W 122°18'0"W 122°17'30"W 122°17'0"W 122°16'30"W 122°16'0"W 122°15'30"W 122°15'0"W







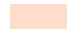
# BYBEE COMPLEX 2004

## Blanket Creek

High Cascades Cplx  
IAP

August 28, 2017



-  highways
-  Fire Location
-  Water Source
-  Crater Lake National Park
-  USFS
-  Trails
-  Historic Fires

