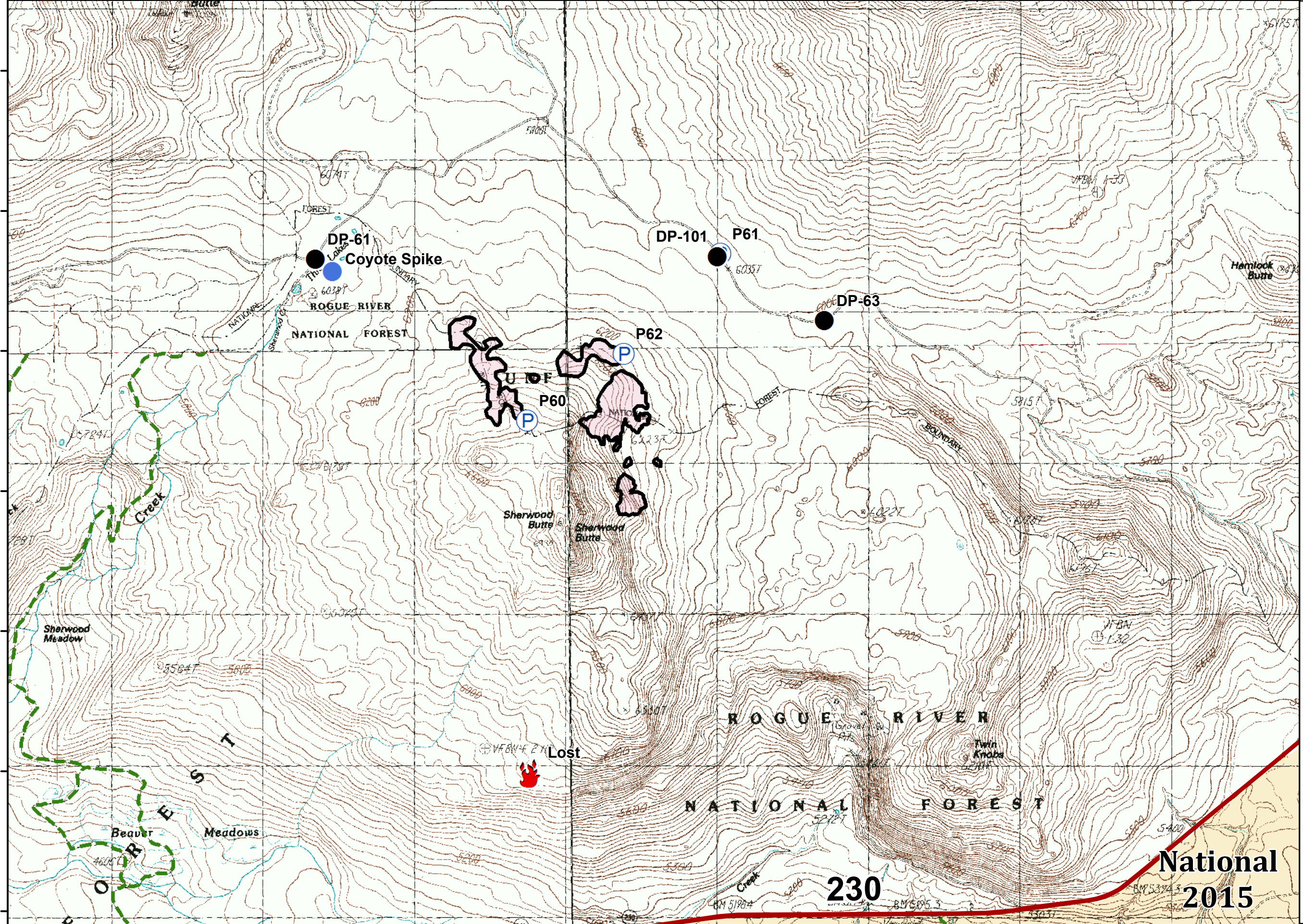


122°17'30"W 122°17'0"W 122°16'30"W 122°16'0"W 122°15'30"W 122°15'0"W 122°14'30"W 122°14'0"W 122°13'30"W 122°13'0"W 122°12'30"W 122°12'0"W 122°11'30"W

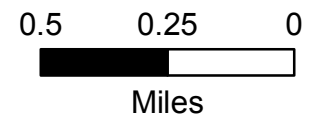
43°8'30"N
43°8'0"N
43°7'30"N
43°7'0"N
43°6'30"N
43°6'0"N
43°5'30"N

Sherwood
High Cascades Cplx
IAP

August 28, 2017



- highways
- Drop Point
- Fire Location
- Helispot
- Pump
- Completed Line
- FirePolygon
- USFS
- Trails
- Historic Fires
- Historic Fire Perimeters



National
2015

230

122°17'30"W 122°17'0"W 122°16'30"W 122°16'0"W 122°15'30"W 122°15'0"W 122°14'30"W 122°14'0"W 122°13'30"W 122°13'0"W 122°12'30"W 122°12'0"W