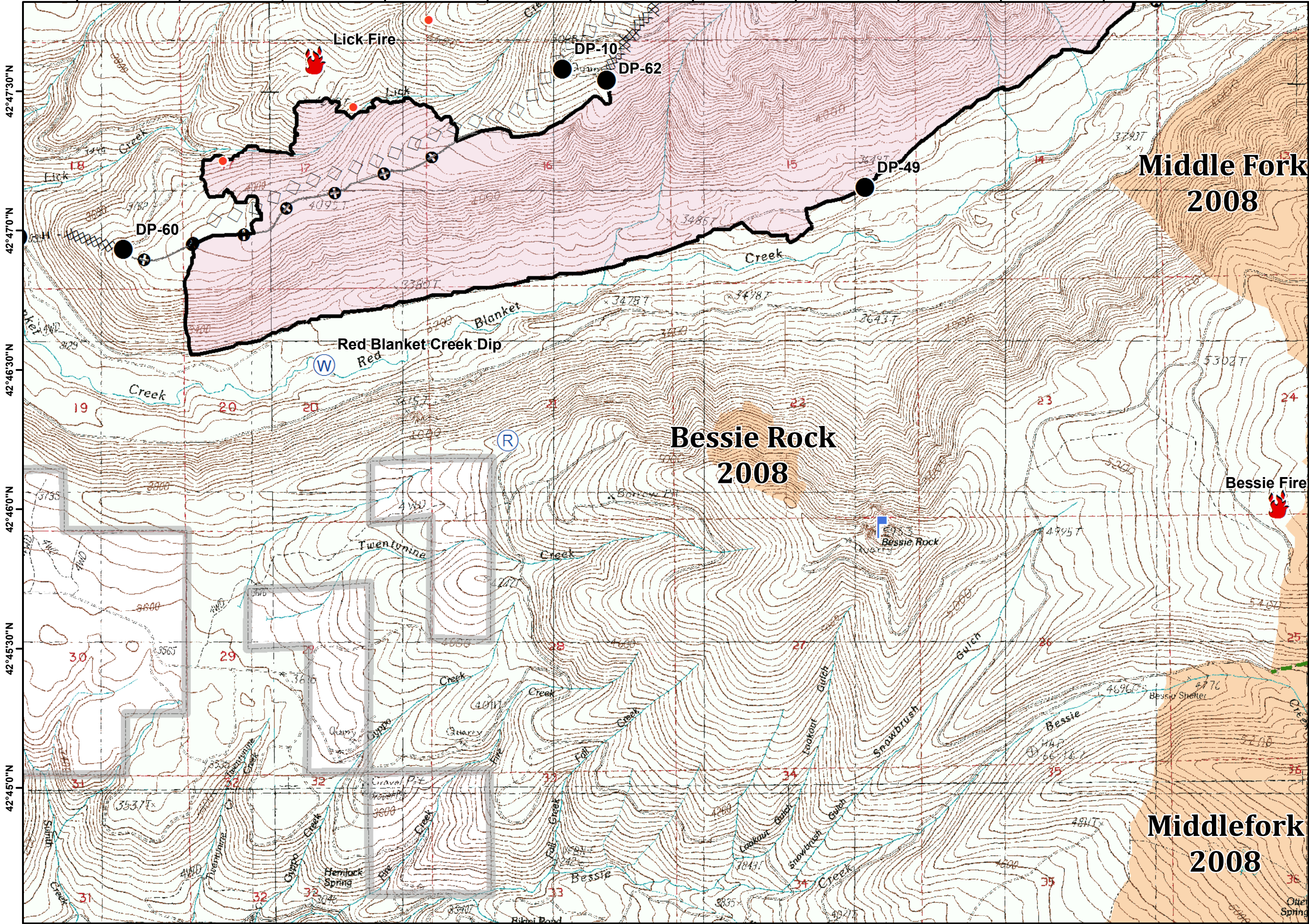


122°23'30"W 122°23'0"W 122°22'30"W 122°22'0"W 122°21'30"W 122°21'0"W 122°20'30"W 122°20'0"W 122°19'30"W 122°19'0"W 122°18'30"W 122°18'0"W

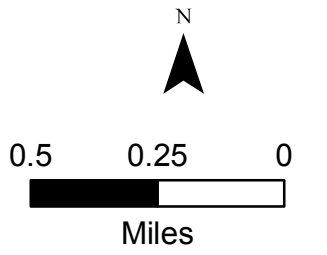


Blanket Creek
High Cascades Cplx
IAP

August 28, 2017



- Drop Point
- Fire Location
- Hot Spot
- Lookout
- Repeater
- Water Source
- Completed Dozer Line
- Completed Line
- Hand Line
- Aerial Retardant Drop
- Other
- FirePolygon
- USFS
- Private
- Trails
- Historic Fires
- Historic Fire Perimeters



**Middle Fork
2008**

**Bessie Rock
2008**

**Middlefork
2008**

122°23'30"W 122°23'0"W 122°22'30"W 122°22'0"W 122°21'30"W 122°21'0"W 122°20'30"W 122°20'0"W 122°19'30"W 122°19'0"W 122°18'30"W 122°18'0"W