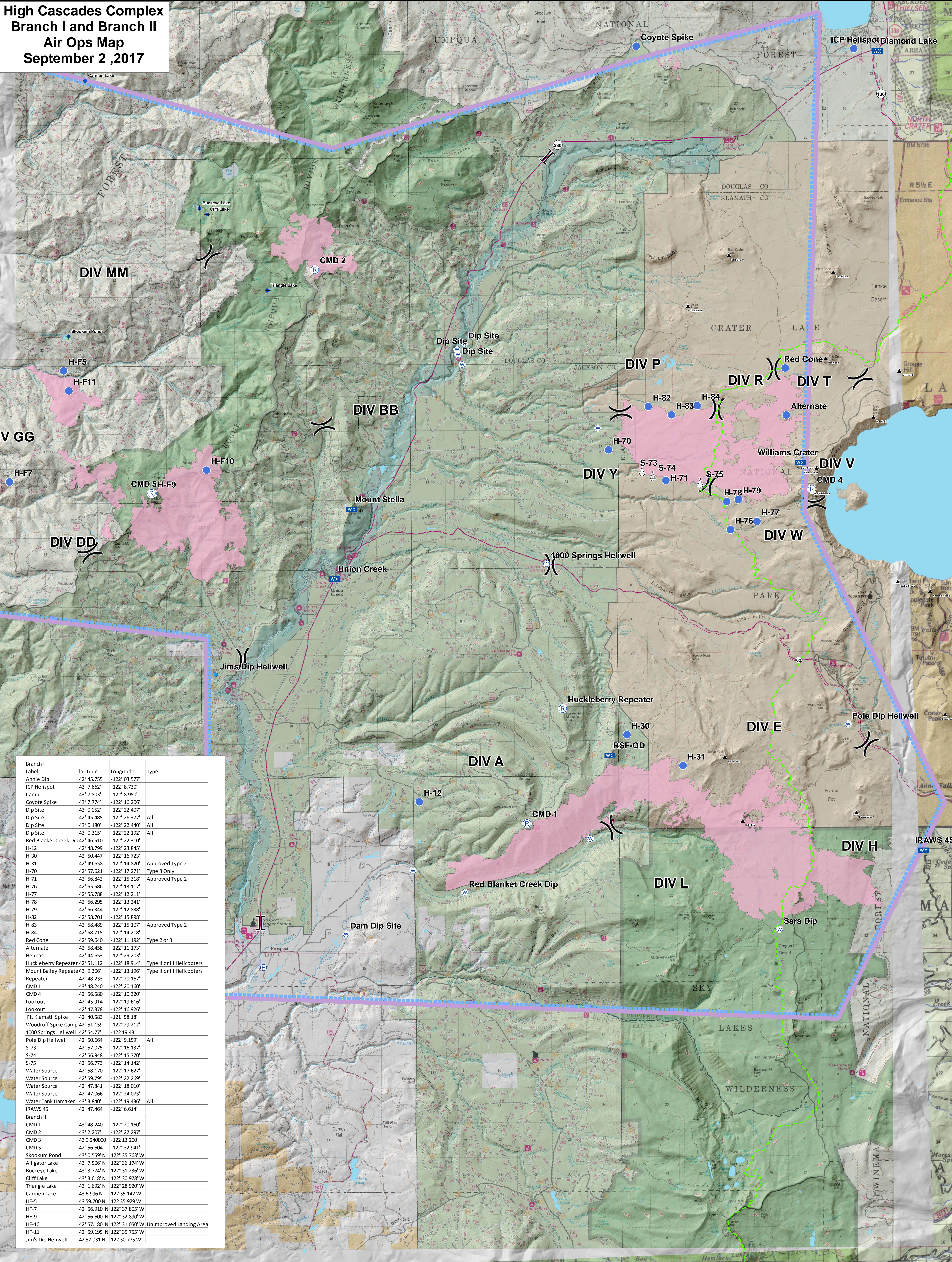


High Cascades Complex Branch I and Branch II Air Ops Map September 2, 2017



| Branch I | Latitude | Longitude | Type |
|-----------------------|---------------|----------------|----------------------------|
| Annie Dip | 42° 45.755' | -122° 03.577' | |
| ICP Helispot | 43° 7.662' | -122° 8.730' | |
| Camp | 43° 7.803' | -122° 8.950' | |
| Coyote Spike | 43° 7.774' | -122° 16.206' | |
| Dip Site | 43° 0.052' | -122° 22.407' | |
| Dip Site | 42° 45.485' | -122° 26.377' | All |
| Dip Site | 43° 0.180' | -122° 22.440' | All |
| Dip Site | 43° 0.315' | -122° 22.192' | All |
| Red Blanket Creek Dip | 42° 46.510' | -122° 22.310' | |
| H-12 | 42° 48.799' | -122° 23.845' | |
| H-30 | 42° 50.447' | -122° 16.723' | |
| H-31 | 42° 49.658' | -122° 14.820' | Approved Type 2 |
| H-70 | 42° 57.621' | -122° 17.271' | Type 3 Only |
| H-71 | 42° 56.842' | -122° 15.318' | Approved Type 2 |
| H-76 | 42° 55.586' | -122° 13.117' | |
| H-77 | 42° 55.788' | -122° 12.211' | |
| H-78 | 42° 56.295' | -122° 13.241' | |
| H-79 | 42° 56.344' | -122° 12.838' | |
| H-82 | 42° 58.701' | -122° 15.898' | |
| H-83 | 42° 58.489' | -122° 15.107' | Approved Type 2 |
| H-84 | 42° 58.715' | -122° 14.218' | |
| Red Cone | 42° 59.640' | -122° 11.192' | Type 2 or 3 |
| Alternate | 42° 58.458' | -122° 11.173' | |
| Helibase | 42° 44.653' | -122° 29.203' | |
| Huckleberry Repeater | 42° 51.112' | -122° 18.914' | Type II or III Helicopters |
| Mount Bailey Repeater | 43° 9.306' | -122° 13.196' | Type II or III Helicopters |
| Repeater | 42° 48.233' | -122° 20.167' | |
| CMD 1 | 43° 48.240' | -122° 20.160' | |
| CMD 4 | 42° 56.580' | -122° 10.320' | |
| Lookout | 42° 45.914' | -122° 19.616' | |
| Lookout | 42° 47.378' | -122° 16.926' | |
| Ft. Klamath Spike | 42° 40.583' | -121° 58.18' | |
| Woodruff Spike Camp | 42° 51.159' | -122° 29.212' | |
| 1000 Springs Heliwell | 42° 54.77' | -122° 19.43' | |
| Pole Dip Heliwell | 42° 50.664' | -122° 9.159' | All |
| S-73 | 42° 57.075' | -122° 16.137' | |
| S-74 | 42° 56.948' | -122° 15.770' | |
| S-75 | 42° 56.773' | -122° 14.142' | |
| Water Source | 42° 58.170' | -122° 17.627' | |
| Water Source | 42° 59.795' | -122° 22.269' | |
| Water Source | 42° 47.841' | -122° 18.010' | |
| Water Source | 42° 47.066' | -122° 24.073' | |
| Water Tank Hamaker | 43° 3.840' | -122° 19.436' | All |
| IRAWS 45 | 42° 47.464' | -122° 6.614' | |
| Branch II | | | |
| CMD 1 | 43° 48.240' | -122° 20.160' | |
| CMD 2 | 43° 2.207' | -122° 27.297' | |
| CMD 3 | 43° 9.240000 | -122° 13.200 | |
| CMD 5 | 42° 56.604' | -122° 32.941' | |
| Skookum Pond | 43° 0.559' N | 122° 35.763' W | |
| Alligator Lake | 43° 7.506' N | 122° 36.174' W | |
| Buckeye Lake | 43° 3.774' N | 122° 31.236' W | |
| Cliff Lake | 43° 3.618' N | 122° 30.978' W | |
| Triangle Lake | 43° 1.692' N | 122° 28.920' W | |
| Carmen Lake | 43° 6.996' N | 122° 35.142' W | |
| H-F-5 | 43° 59.700' N | 122° 35.929' W | |
| H-F-7 | 42° 56.910' N | 122° 37.805' W | |
| H-F-9 | 42° 56.600' N | 122° 32.890' W | |
| H-F-10 | 42° 57.180' N | 122° 31.050' W | Unimproved Landing Area |
| H-F-11 | 42° 59.195' N | 122° 35.755' W | |
| Jim's Dip Heliwell | 42° 52.031' N | 122° 30.775' W | |