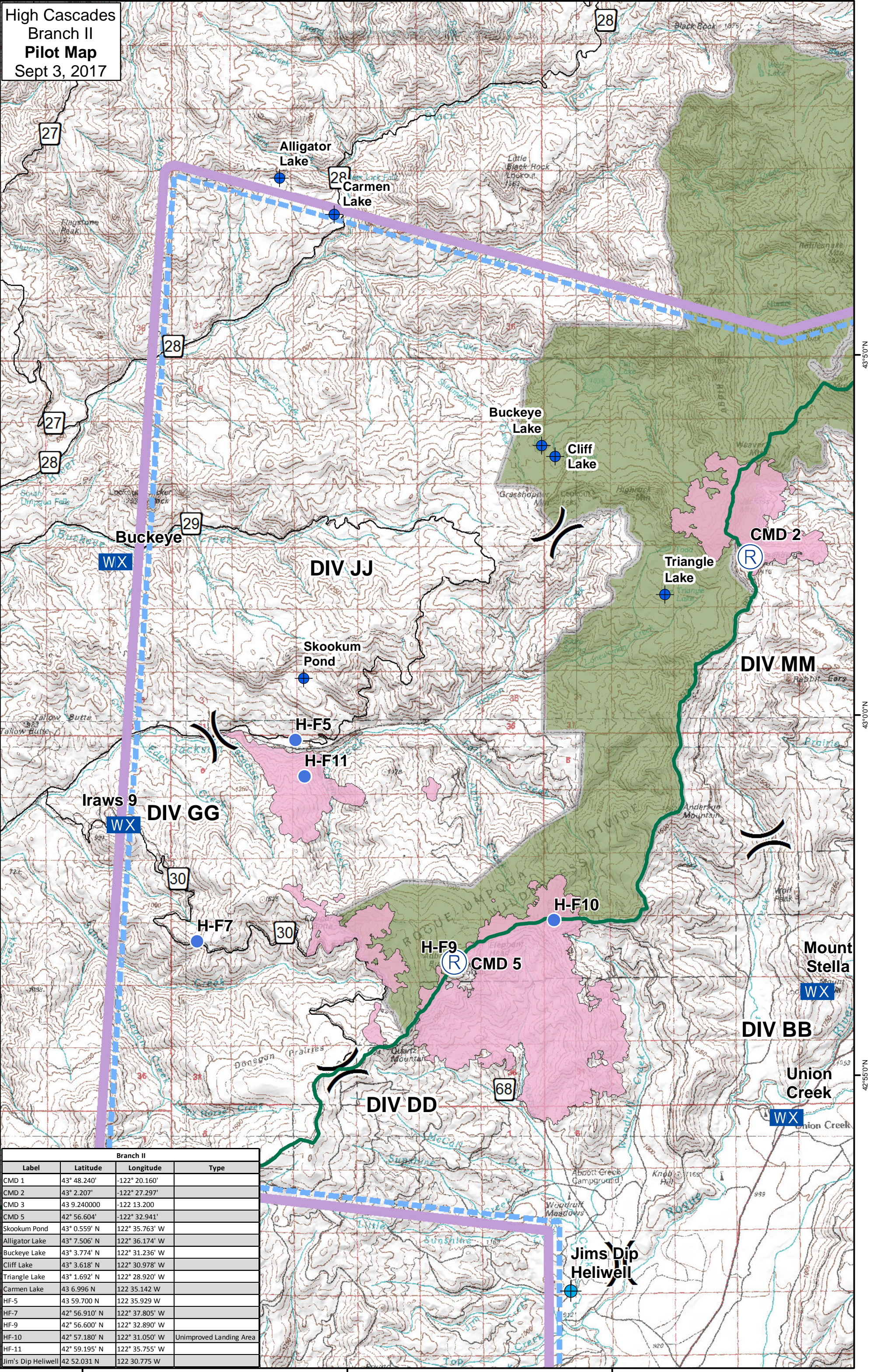


High Cascades
Branch II
Pilot Map
Sept 3, 2017



Branch II			
Label	Latitude	Longitude	Type
CMD 1	43° 48.240'	-122° 20.160'	
CMD 2	43° 2.207'	-122° 27.297'	
CMD 3	43° 9.240000	-122° 13.200	
CMD 5	42° 56.604'	-122° 32.941'	
Skookum Pond	43° 0.559' N	122° 35.763' W	
Alligator Lake	43° 7.506' N	122° 36.174' W	
Buckeye Lake	43° 3.774' N	122° 31.236' W	
Cliff Lake	43° 3.618' N	122° 30.978' W	
Triangle Lake	43° 1.692' N	122° 28.920' W	
Carmen Lake	43° 6.996' N	122° 35.142' W	
HF-5	43° 59.700' N	122° 35.929' W	
HF-7	42° 56.910' N	122° 37.805' W	
HF-9	42° 56.600' N	122° 32.890' W	
HF-10	42° 57.180' N	122° 31.050' W	Unimproved Landing Area
HF-11	42° 59.195' N	122° 35.755' W	
Jim's Dip Heliwell	42° 52.031' N	122° 30.775' W	