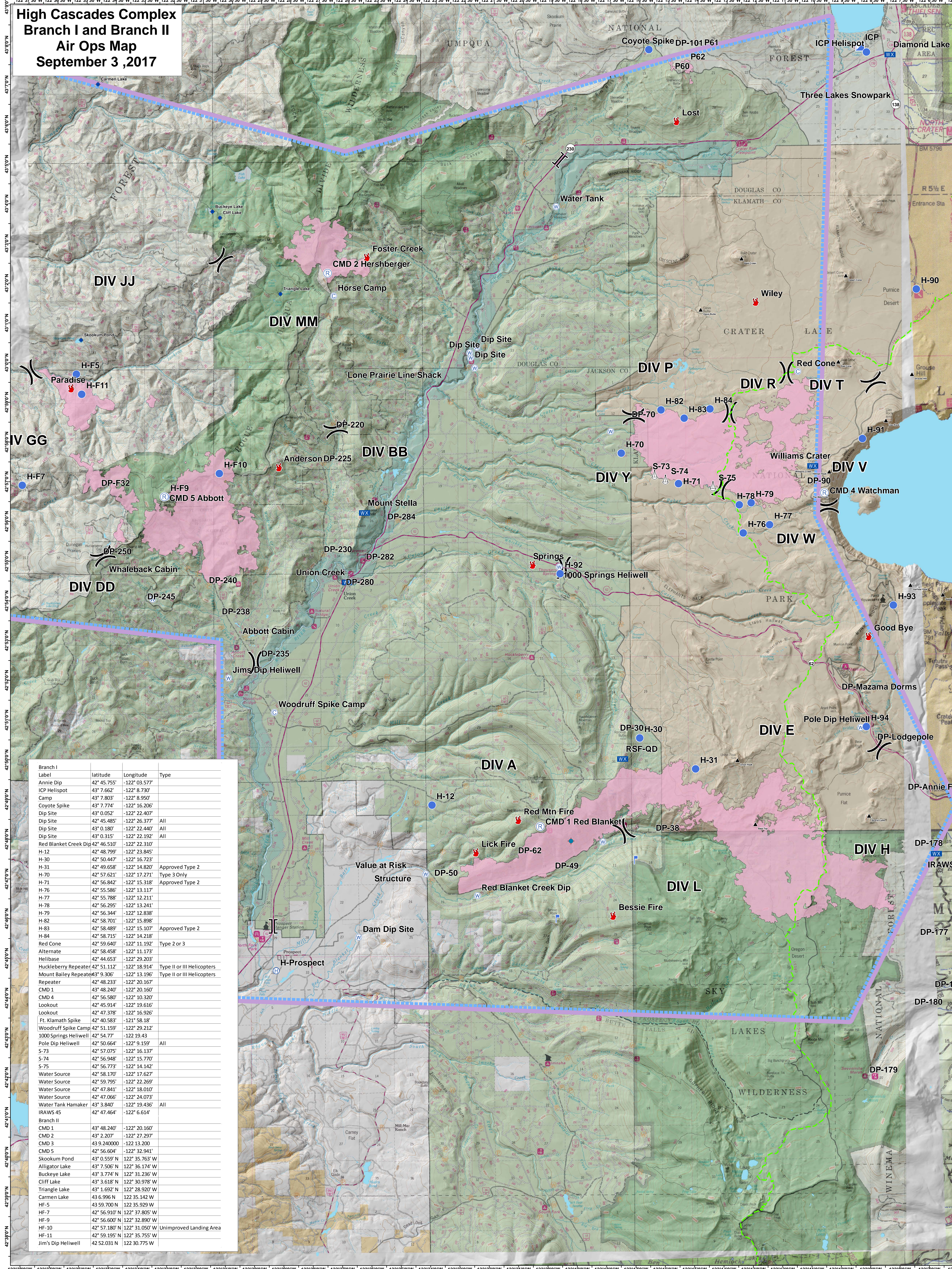


High Cascades Complex Branch I and Branch II Air Ops Map September 3, 2017



Label	Latitude	Longitude	Type
Annie Dip	42° 45.755'	-122° 03.577'	
ICP Helispot	43° 7.662'	-122° 8.730'	
Camp	43° 7.803'	-122° 8.950'	
Coyote Spike	43° 7.774'	-122° 16.206'	
Dip Site	43° 0.052'	-122° 22.407'	
Dip Site	42° 45.485'	-122° 26.377'	All
Dip Site	43° 0.180'	-122° 22.440'	All
Dip Site	43° 0.315'	-122° 22.192'	All
Red Blasket Creek Dip	42° 46.510'	-122° 22.310'	
H-12	42° 48.799'	-122° 23.845'	
H-30	42° 50.447'	-122° 16.723'	Approved Type 2
H-31	42° 49.658'	-122° 14.820'	Type 3 Only
H-70	42° 57.621'	-122° 17.271'	Approved Type 2
H-71	42° 56.842'	-122° 15.318'	
H-76	42° 55.586'	-122° 13.117'	
H-77	42° 55.788'	-122° 12.211'	
H-78	42° 56.295'	-122° 13.241'	
H-79	42° 56.344'	-122° 12.838'	
H-82	42° 58.701'	-122° 15.898'	
H-83	42° 58.489'	-122° 15.107'	Approved Type 2
H-84	42° 58.715'	-122° 14.218'	
Red Cone	42° 59.640'	-122° 11.192'	Type 2 or 3
Alternate	42° 58.458'	-122° 11.173'	
Helibase	42° 44.653'	-122° 29.203'	
Huckleberry Repeater	42° 51.112'	-122° 18.914'	Type II or III Helicopters
Mount Bailey Repeater	43° 9.306'	-122° 13.196'	Type II or III Helicopters
Repeater	42° 48.233'	-122° 20.167'	
CMD 1	43° 48.240'	-122° 20.160'	
CMD 4	42° 56.580'	-122° 10.320'	
Lookout	42° 45.914'	-122° 19.616'	
Lookout	42° 47.378'	-122° 16.926'	
Ft. Klamath Spike	42° 40.583'	-121° 58.18'	
Woodruff Spike Camp	42° 51.159'	-122° 29.212'	
1000 Springs Heliwell	42° 54.77'	-122° 19.43'	
Pole Dip Heliwell	42° 50.664'	-122° 9.159'	All
S-73	42° 57.075'	-122° 16.137'	
S-74	42° 56.948'	-122° 15.770'	
S-75	42° 56.773'	-122° 14.142'	
Water Source	42° 58.170'	-122° 17.627'	
Water Source	42° 59.795'	-122° 22.269'	
Water Source	42° 47.841'	-122° 18.010'	
Water Source	42° 47.066'	-122° 24.073'	
Water Tank Hamaker	43° 3.840'	-122° 19.436'	All
IRAWS 45	42° 47.464'	-122° 6.614'	
Branch II			
CMD 1	43° 48.240'	-122° 20.160'	
CMD 2	43° 2.207'	-122° 27.297'	
CMD 3	43° 9.240000	-122° 13.200	
CMD 5	42° 56.604'	-122° 32.941'	
Skookum Pond	43° 0.559' N	122° 35.763' W	
Alligator Lake	43° 7.506' N	122° 36.174' W	
Buckeye Lake	43° 3.774' N	122° 31.236' W	
Cliff Lake	43° 3.618' N	122° 30.978' W	
Triangle Lake	43° 1.692' N	122° 28.920' W	
Carmen Lake	43° 6.996' N	122° 35.142' W	
H-F-5	43° 59.700' N	122° 35.929' W	
H-F-7	42° 56.910' N	122° 37.805' W	
H-F-9	42° 56.600' N	122° 32.890' W	
H-F-10	42° 57.180' N	122° 31.050' W	Unimproved Landing Area
H-F-11	42° 59.195' N	122° 35.755' W	
Jim's Dip Heliwell	42° 52.031' N	122° 30.775' W	