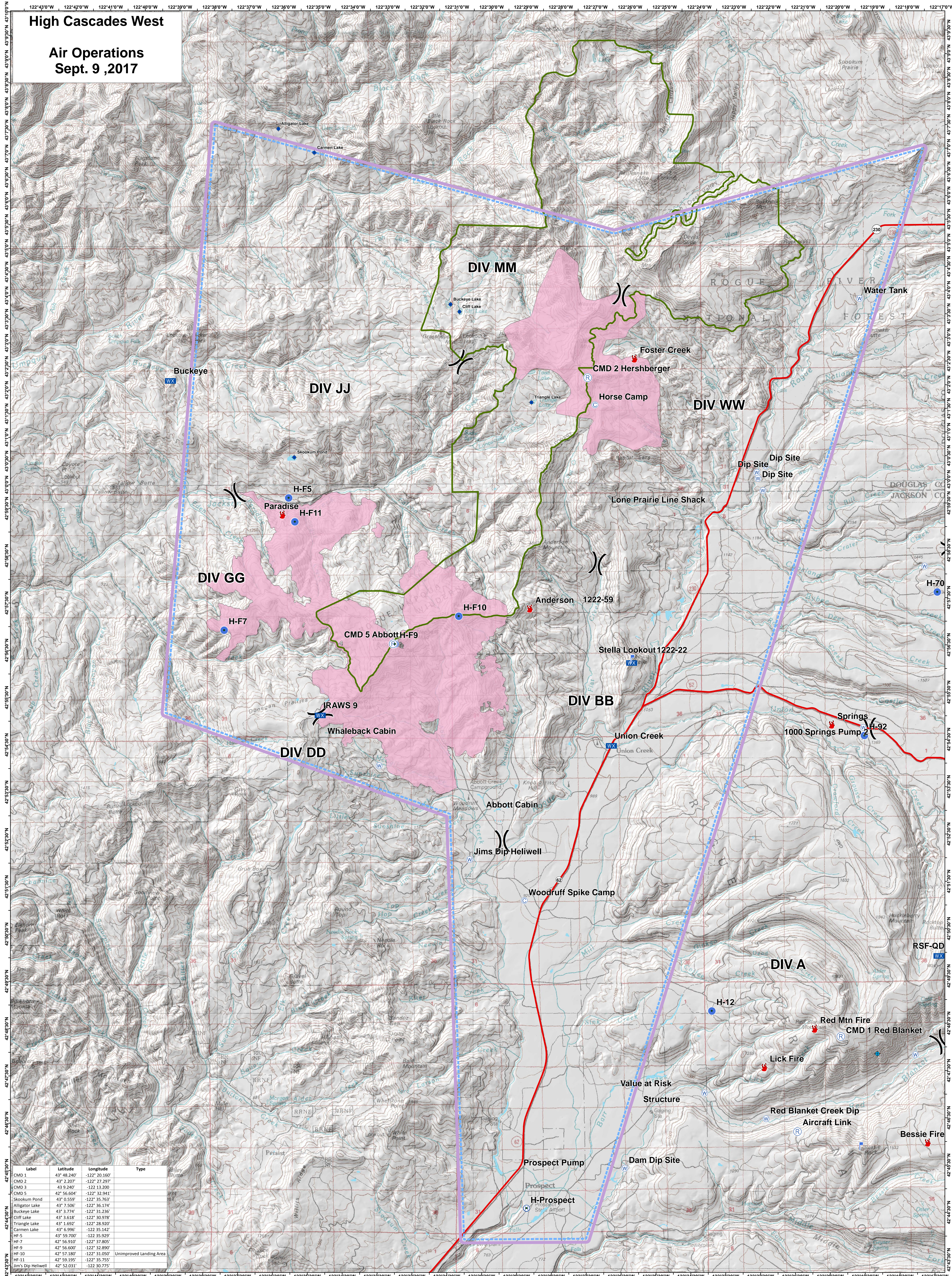


High Cascades West

Air Operations
Sept. 9, 2017



DIV MM

DIV JJ

DIV WW

DIV GG

DIV BB

DIV DD

DIV A

Label	Latitude	Longitude	Type
CMD 1	43° 48.240'	-122° 20.160'	
CMD 2	43° 2.207'	-122° 27.297'	
CMD 3	43° 9.240'	-122° 13.200'	
CMD 5	42° 56.604'	-122° 32.941'	
Skookum Pond	43° 0.559'	-122° 35.763'	
Alligator Lake	43° 7.506'	-122° 36.174'	
Buckeye Lake	43° 3.774'	-122° 31.236'	
Cliff Lake	43° 3.618'	-122° 30.978'	
Triangle Lake	43° 1.692'	-122° 28.820'	
Carmen Lake	43° 6.996'	-122° 35.142'	
H-F-5	43° 59.700'	-122° 35.929'	
H-F-7	42° 56.910'	-122° 37.805'	
H-F-9	42° 56.600'	-122° 32.890'	
H-F-10	42° 57.180'	-122° 31.050'	Unimproved Landing Area
H-F-11	42° 59.195'	-122° 35.755'	
Jim's Dip Heliwell	42° 52.031'	-122° 30.775'	