

122°25'0"W

122°20'0"W

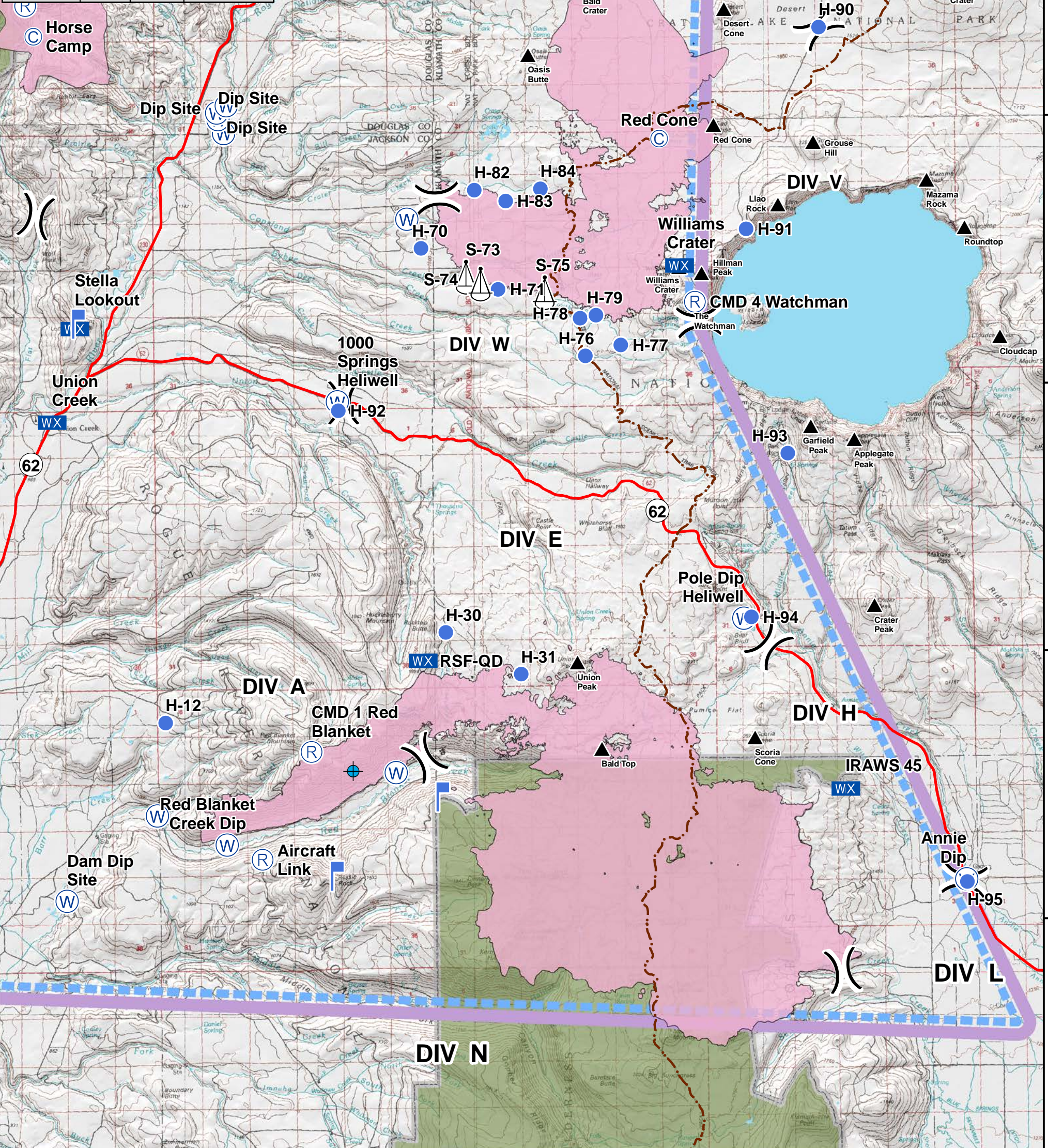
122°15'0"W

122°10'0"W

122°5'0"W

High Cascades East Air Operations Sept. 9, 2017

Label	Latitude	Longitude	Type
Annie Dip	42° 45.755'	-122° 03.577'	
ICP Helispot	43° 7.662'	-122° 8.730'	
Camp	43° 7.803'	-122° 8.950'	
Coyote Spike	43° 7.774'	-122° 16.206'	
Dip Site	43° 0.052'	-122° 22.407'	
Dip Site	42° 45.485'	-122° 26.377'	All
Dip Site	43° 0.180'	-122° 22.440'	All
Dip Site	43° 0.315'	-122° 22.192'	All
Red Blanket Creek Dip	42° 46.510'	-122° 22.310'	
H-12	42° 48.799'	-122° 23.845'	
H-30	42° 50.447'	-122° 16.723'	
H-31	42° 49.658'	-122° 14.820'	Approved Type 2
H-70	42° 57.621'	-122° 17.271'	Type 3 Only
H-71	42° 56.842'	-122° 15.318'	Approved Type 2
H-76	42° 55.586'	-122° 13.117'	
H-77	42° 55.788'	-122° 12.211'	
H-78	42° 56.295'	-122° 13.241'	
H-79	42° 56.344'	-122° 12.838'	
H-82	42° 58.701'	-122° 15.898'	
H-83	42° 58.489'	-122° 15.107'	Approved Type 2
H-84	42° 58.715'	-122° 14.218'	
H-90	43° 01.683'	-122° 07.100'	
H-91	42° 57.933'	-122° 09.000'	
H-92	42° 54.600'	-122° 19.400'	
H-93	42° 53.733'	-122° 08.000'	
H-94	42° 50.683'	-122° 08.967'	
H-95	42° 45.705'	-122° 03.558'	
Red Cone	42° 59.640'	-122° 11.192'	Type 2 or 3
Alternate	42° 58.458'	-122° 11.173'	
Helibase	42° 44.653'	-122° 29.203'	
Huckleberry Repeater	42° 51.112'	-122° 18.914'	Type II or III Helicopters
Mount Bailey Repeater	43° 9.306'	-122° 13.196'	Type II or III Helicopters
Repeater	42° 48.233'	-122° 20.167'	
CMD 1	43° 48.240'	-122° 20.160'	
CMD 4	42° 56.580'	-122° 10.320'	
Lookout	42° 45.914'	-122° 19.616'	
Lookout	42° 47.378'	-122° 16.926'	
Ft. Klamath Spike	42° 40.583'	-121° 58.18'	
Woodruff Spike Camp	42° 51.159'	-122° 29.212'	
1000 Springs Heliwell	42° 54.77'	-122° 19.43'	
Pole Dip Heliwell	42° 50.664'	-122° 9.159'	All
S-73	42° 57.075'	-122° 16.137'	
S-74	42° 56.948'	-122° 15.770'	
S-75	42° 56.773'	-122° 14.142'	
Water Source	42° 58.170'	-122° 17.627'	
Water Source	42° 59.795'	-122° 22.269'	
Water Source	42° 47.841'	-122° 18.010'	
Water Source	42° 47.066'	-122° 24.073'	
Water Tank Hamaker	43° 3.840'	-122° 19.436'	All
IRAWS 45	42° 47.464'	-122° 6.614'	



43°1'0"N
43°5'0"N
43°0'0"N
42°55'0"N
42°5'0"N
42°45'0"N

122°25'0"W

122°20'0"W

122°15'0"W

122°10'0"W

122°5'0"W