

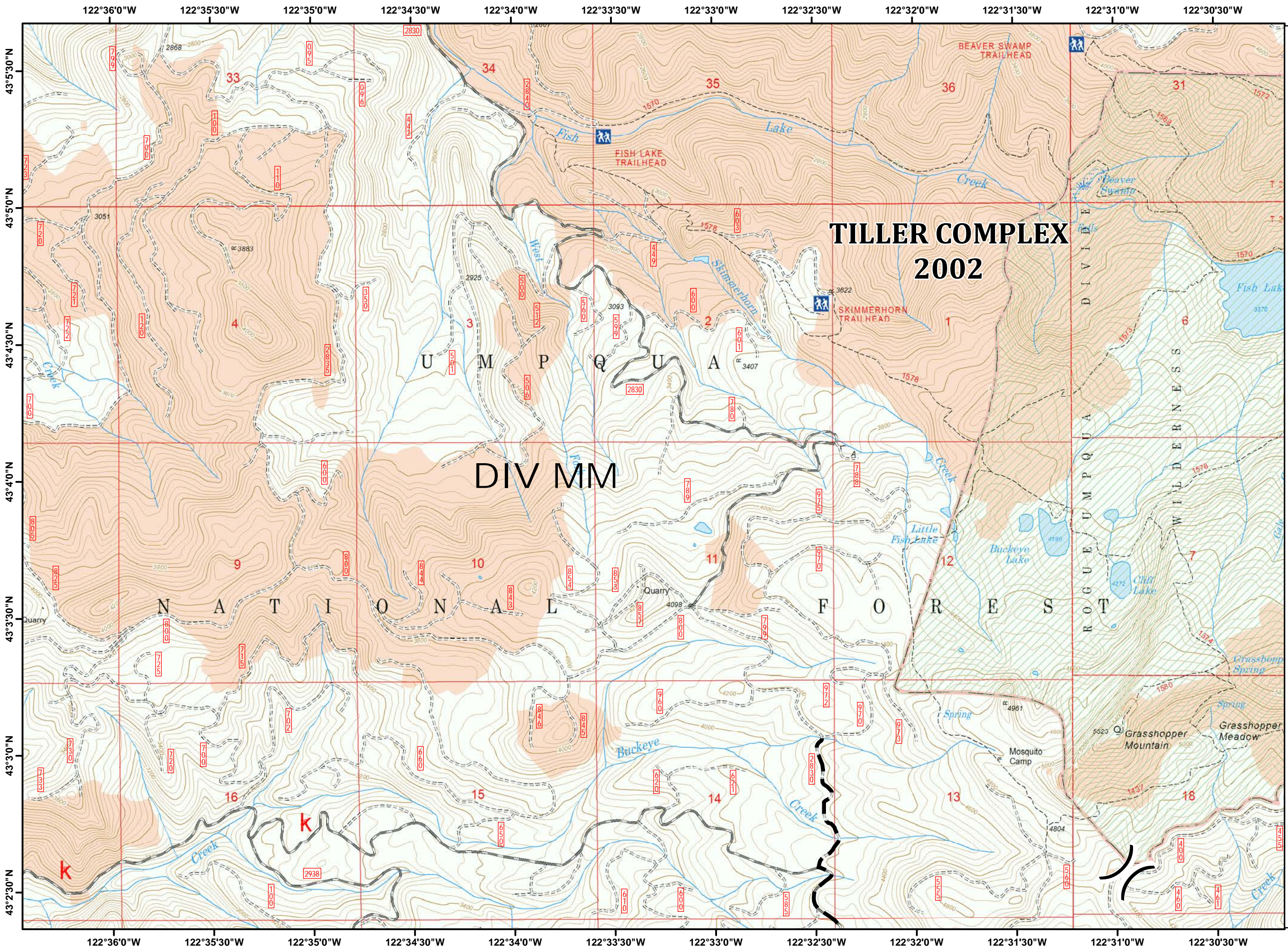
High Cascades West

IAP Index

September 9, 2017



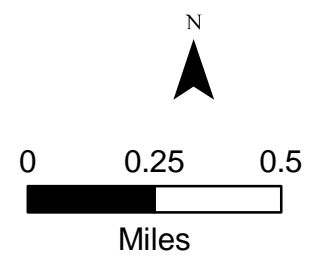
Index



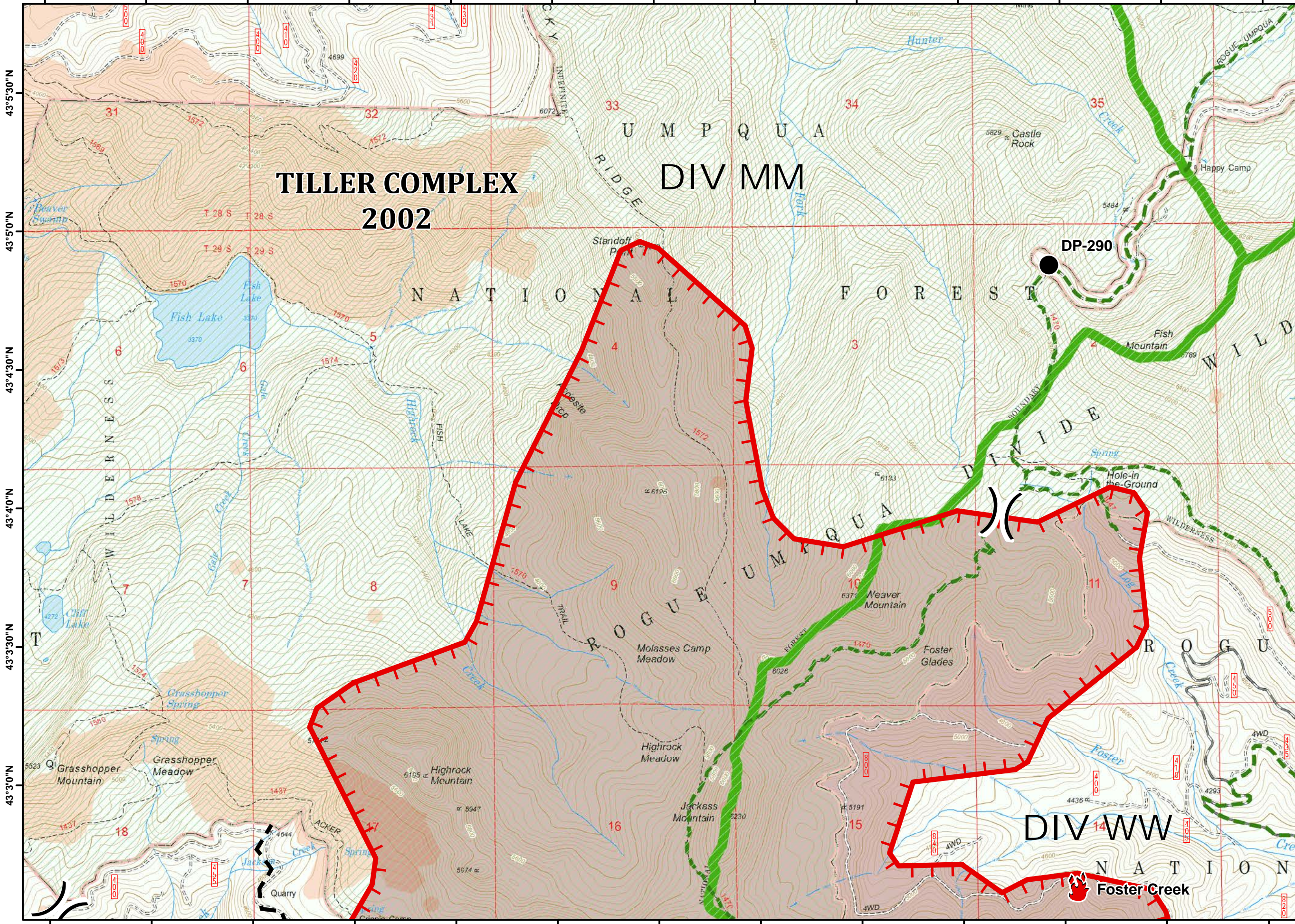
TILLER COMPLEX 2002

DIV MM

- Planned Fire Line
- USFS
- Wilderness
- Trails
- Historic Fire Perimeters



122°31'0"W 122°30'30"W 122°30'0"W 122°29'30"W 122°29'0"W 122°28'30"W 122°28'0"W 122°27'30"W 122°27'0"W 122°26'30"W 122°26'0"W 122°25'30"W 122°25'0"W










43°5'30"N
43°5'0"N
43°4'30"N
43°4'0"N
43°3'30"N
43°3'0"N

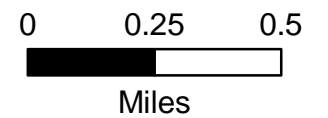
122°31'0"W 122°30'30"W 122°30'0"W 122°29'30"W 122°29'0"W 122°28'30"W 122°28'0"W 122°27'30"W 122°27'0"W 122°26'30"W 122°26'0"W 122°25'30"W 122°25'0"W

West
High Cascades
IAP

September 9, 2017



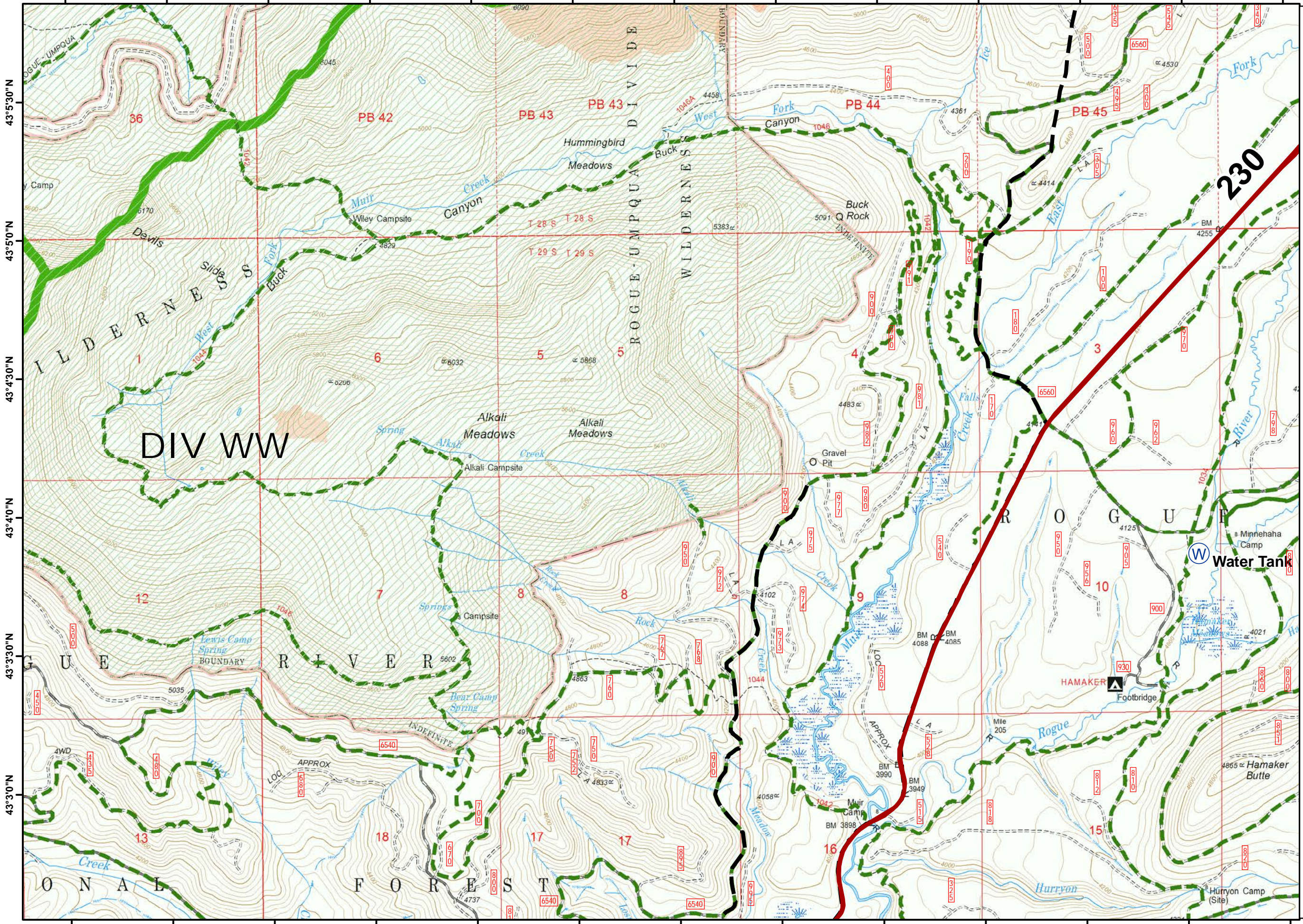
-  Drop Point
-  Fire Location
-  Uncontrolled Fire Edge
-  Planned Fire Line
-  USFS Wilderness
-  Trails
-  Fire Area
-  Historic Fire Perimeters
-  Historic Fire Perimeters



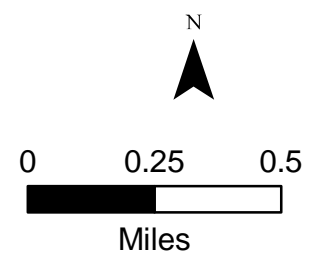
122°25'0"W 122°24'30"W 122°24'0"W 122°23'30"W 122°23'0"W 122°22'30"W 122°22'0"W 122°21'30"W 122°21'0"W 122°20'30"W 122°20'0"W 122°19'30"W 122°19'0"W

West High Cascades IAP

September 9, 2017



- highways
- Water Source
- Planned Fire Line
- USFS Wilderness
- Trails
- Historic Fire Perimeters
- Historic Fire Perimeters



122°25'0"W 122°24'30"W 122°24'0"W 122°23'30"W 122°23'0"W 122°22'30"W 122°22'0"W 122°21'30"W 122°21'0"W 122°20'30"W 122°20'0"W 122°19'30"W 122°19'0"W

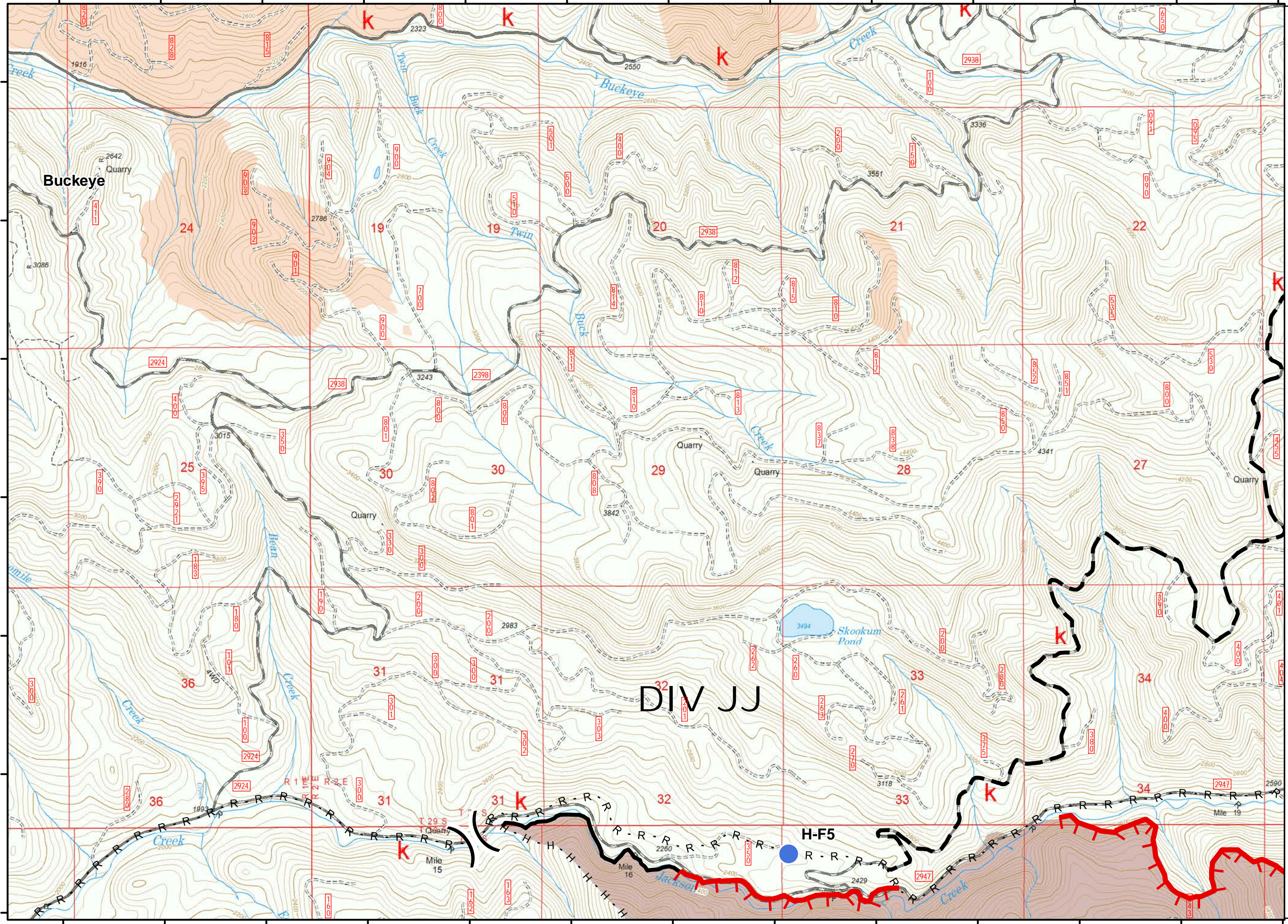
122°39'30"W 122°39'0"W 122°38'30"W 122°38'0"W 122°37'30"W 122°37'0"W 122°36'30"W 122°36'0"W 122°35'30"W 122°35'0"W 122°34'30"W 122°34'0"W 122°33'30"W










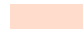
43°2'30"N
43°2'0"N
43°1'30"N
43°1'0"N
43°0'30"N
43°0'0"N
42°59'30"N

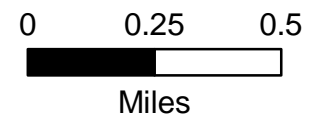
Page : 4W

West High Cascades IAP

September 9, 2017

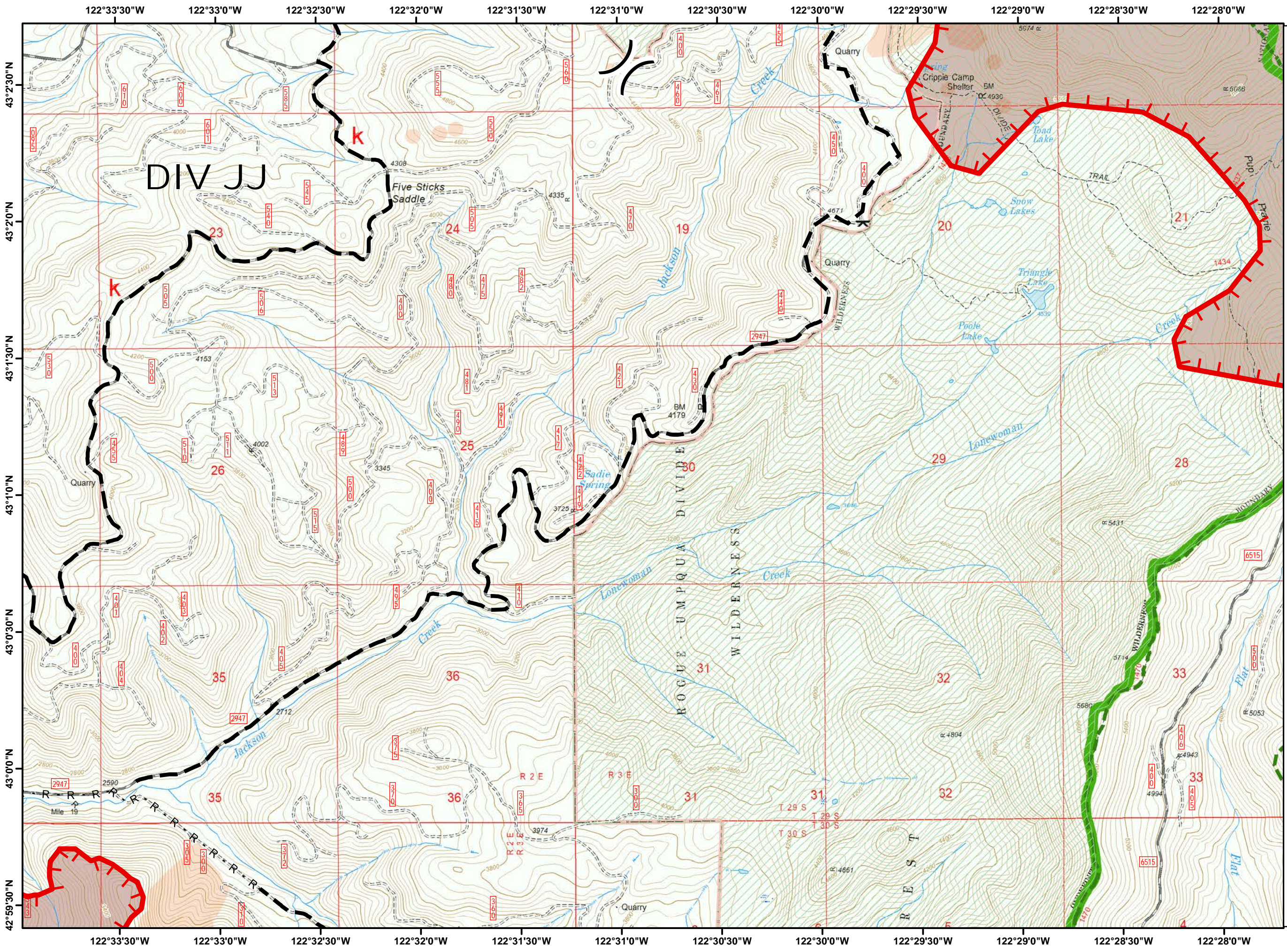


-  Helispot
-  Uncontrolled Fire Edge
-  Completed Line
-  H - H - Hand Line
-  R - R - Road as Completed Line
-  Planned Fire Line
-  USFS
-  Trails
-  Fire Area
-  Historic Fire Perimeters

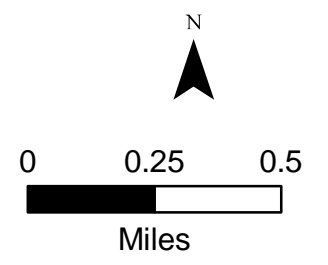


West High Cascades IAP

September 9, 2017



- Uncontrolled Fire Edge
- R - R - Road as Completed Line
- Planned Fire Line
- USFS Wilderness
- Trails
- Fire Area
- Historic Fire Perimeters



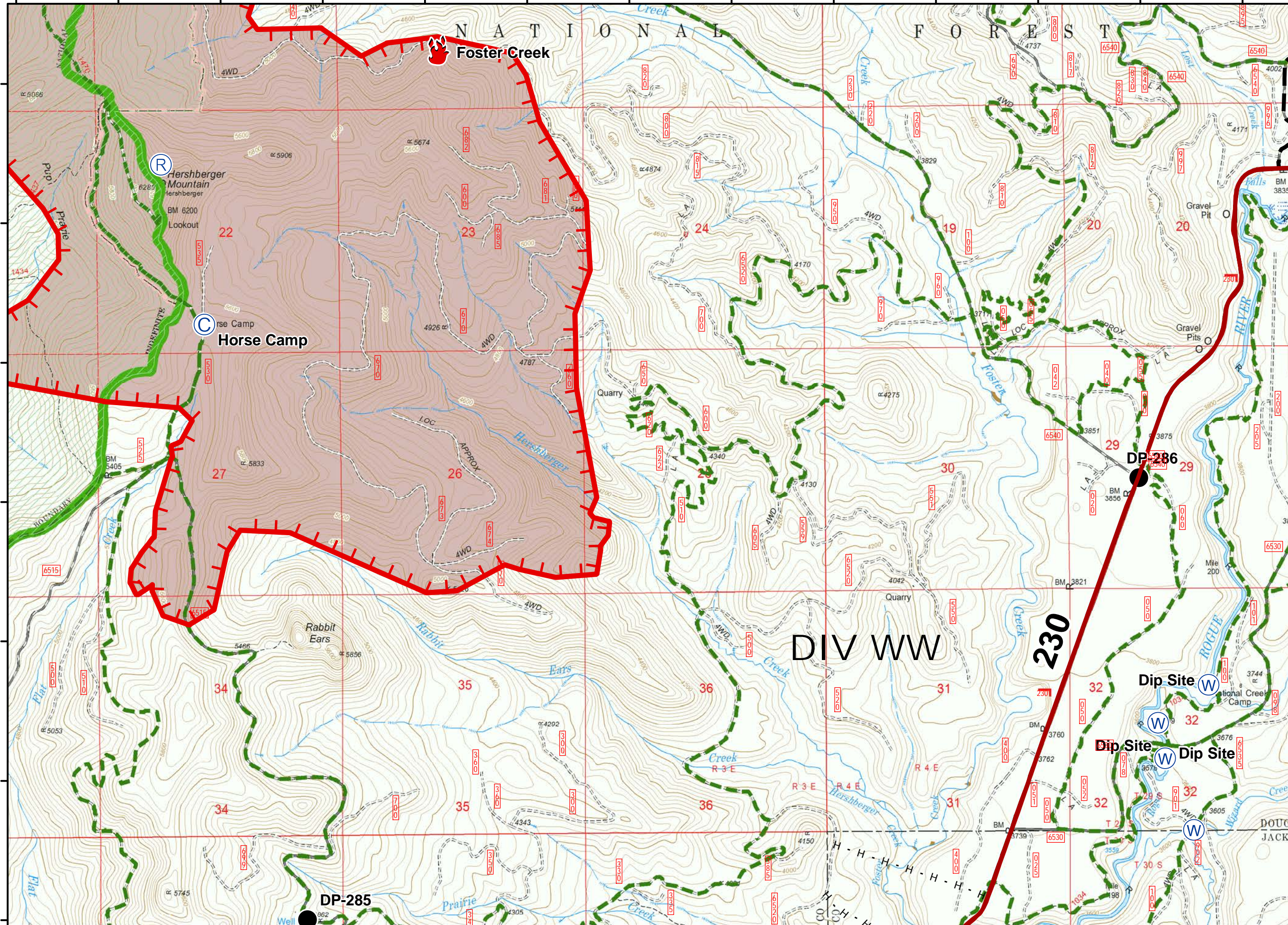
122°28'0"W 122°27'30"W 122°27'0"W 122°26'30"W 122°26'0"W 122°25'30"W 122°25'0"W 122°24'30"W 122°24'0"W 122°23'30"W 122°23'0"W 122°22'30"W 122°22'0"W

43°2'30"N
43°2'0"N
43°1'30"N
43°1'0"N
43°0'30"N
43°0'0"N

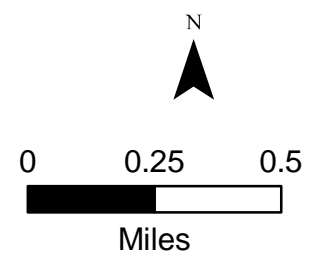
122°28'0"W 122°27'30"W 122°27'0"W 122°26'30"W 122°26'0"W 122°25'30"W 122°25'0"W 122°24'30"W 122°24'0"W 122°23'30"W 122°23'0"W 122°22'30"W 122°22'0"W

West
High Cascades
IAP

September 9, 2017



- highways
- Camp
- Drop Point
- Fire Location
- Repeater
- Water Source
- Uncontrolled Fire Edge
- Hand Line
- Planned Fire Line
- USFS Wilderness
- Trails
- Fire Area



DIV WW

230

Foster Creek

Horse Camp

Dip Site

Dip Site

Dip Site

DP-285

DP-286

Hershberger Mountain

Rabbit Ears

Quarry

Quarry

Gravel Pit

Gravel Pits

DOUG JACKS

Base Camp

Lookout

Quarry

Quarry

Gravel Pit

Gravel Pits

DOUG JACKS

Base Camp

Lookout

Quarry

Quarry

Gravel Pit

Gravel Pits

DOUG JACKS

Base Camp

Lookout

Quarry

Quarry

Gravel Pit

Gravel Pits

DOUG JACKS

Base Camp

Lookout

Quarry

Quarry

Gravel Pit

Gravel Pits

DOUG JACKS

Base Camp

Lookout

Quarry

Quarry

Gravel Pit

Gravel Pits

DOUG JACKS

Base Camp

Lookout

Quarry

Quarry

Gravel Pit

Gravel Pits

DOUG JACKS

Base Camp

Lookout

Quarry

Quarry

Gravel Pit

Gravel Pits

DOUG JACKS

Base Camp

Lookout

Quarry

Quarry

Gravel Pit

Gravel Pits

DOUG JACKS

Base Camp

Lookout

Quarry

Quarry

Gravel Pit

Gravel Pits

DOUG JACKS

Base Camp

Lookout

Quarry

Quarry

Gravel Pit

Gravel Pits

DOUG JACKS

Base Camp

Lookout

Quarry

Quarry

Gravel Pit

Gravel Pits

DOUG JACKS

Base Camp

Lookout

Quarry

Quarry

Gravel Pit

Gravel Pits

DOUG JACKS

Base Camp

Lookout

Quarry

Quarry

Gravel Pit

Gravel Pits

DOUG JACKS

Base Camp

Lookout

Quarry

Quarry

Gravel Pit

Gravel Pits

DOUG JACKS

Base Camp

Lookout

Quarry

Quarry

Gravel Pit

Gravel Pits

DOUG JACKS

Base Camp

Lookout

Quarry

Quarry

Gravel Pit

Gravel Pits

DOUG JACKS

Base Camp

Lookout

Quarry

Quarry

Gravel Pit

Gravel Pits

DOUG JACKS

Base Camp

Lookout

Quarry

Quarry

Gravel Pit

Gravel Pits

DOUG JACKS

Base Camp

Lookout

Quarry

Quarry

Gravel Pit

Gravel Pits

DOUG JACKS

Base Camp

Lookout

Quarry

Quarry

Gravel Pit

Gravel Pits

DOUG JACKS

Base Camp

Lookout

Quarry

Quarry

Gravel Pit

Gravel Pits

DOUG JACKS

Base Camp

Lookout

Quarry

Quarry

Gravel Pit

Gravel Pits

DOUG JACKS

Base Camp

Lookout

Quarry

Quarry

Gravel Pit

Gravel Pits

DOUG JACKS

Base Camp

Lookout

Quarry

Quarry

Gravel Pit

Gravel Pits

DOUG JACKS

Base Camp

Lookout

Quarry

Quarry

Gravel Pit

Gravel Pits

DOUG JACKS

Base Camp

Lookout

Quarry

Quarry

Gravel Pit

Gravel Pits

DOUG JACKS

Base Camp

Lookout

Quarry

Quarry

Gravel Pit

Gravel Pits

DOUG JACKS

Base Camp

Lookout

Quarry

Quarry

Gravel Pit

Gravel Pits

DOUG JACKS

Base Camp

Lookout

Quarry

Quarry

Gravel Pit

Gravel Pits

DOUG JACKS

Base Camp

Lookout

Quarry

Quarry

Gravel Pit

Gravel Pits

DOUG JACKS

Base Camp

Lookout

Quarry

Quarry

Gravel Pit

Gravel Pits

DOUG JACKS

Base Camp

Lookout

Quarry

Quarry

Gravel Pit

Gravel Pits

DOUG JACKS

Base Camp

Lookout

Quarry

Quarry

Gravel Pit

Gravel Pits

DOUG JACKS

Base Camp

Lookout

Quarry

Quarry

Gravel Pit

Gravel Pits

DOUG JACKS

Base Camp

Lookout

Quarry

Quarry

Gravel Pit

Gravel Pits

DOUG JACKS

Base Camp

Lookout

Quarry

Quarry

Gravel Pit

Gravel Pits

DOUG JACKS

Base Camp

Lookout

Quarry

Quarry

Gravel Pit

Gravel Pits

DOUG JACKS

Base Camp

Lookout

Quarry

Quarry

Gravel Pit

Gravel Pits

DOUG JACKS

Base Camp

Lookout

Quarry

Quarry

Gravel Pit

Gravel Pits

DOUG JACKS

Base Camp

Lookout

Quarry

Quarry

Gravel Pit

Gravel Pits

DOUG JACKS

Base Camp

Lookout

Quarry

Quarry

Gravel Pit

Gravel Pits

DOUG JACKS

Base Camp

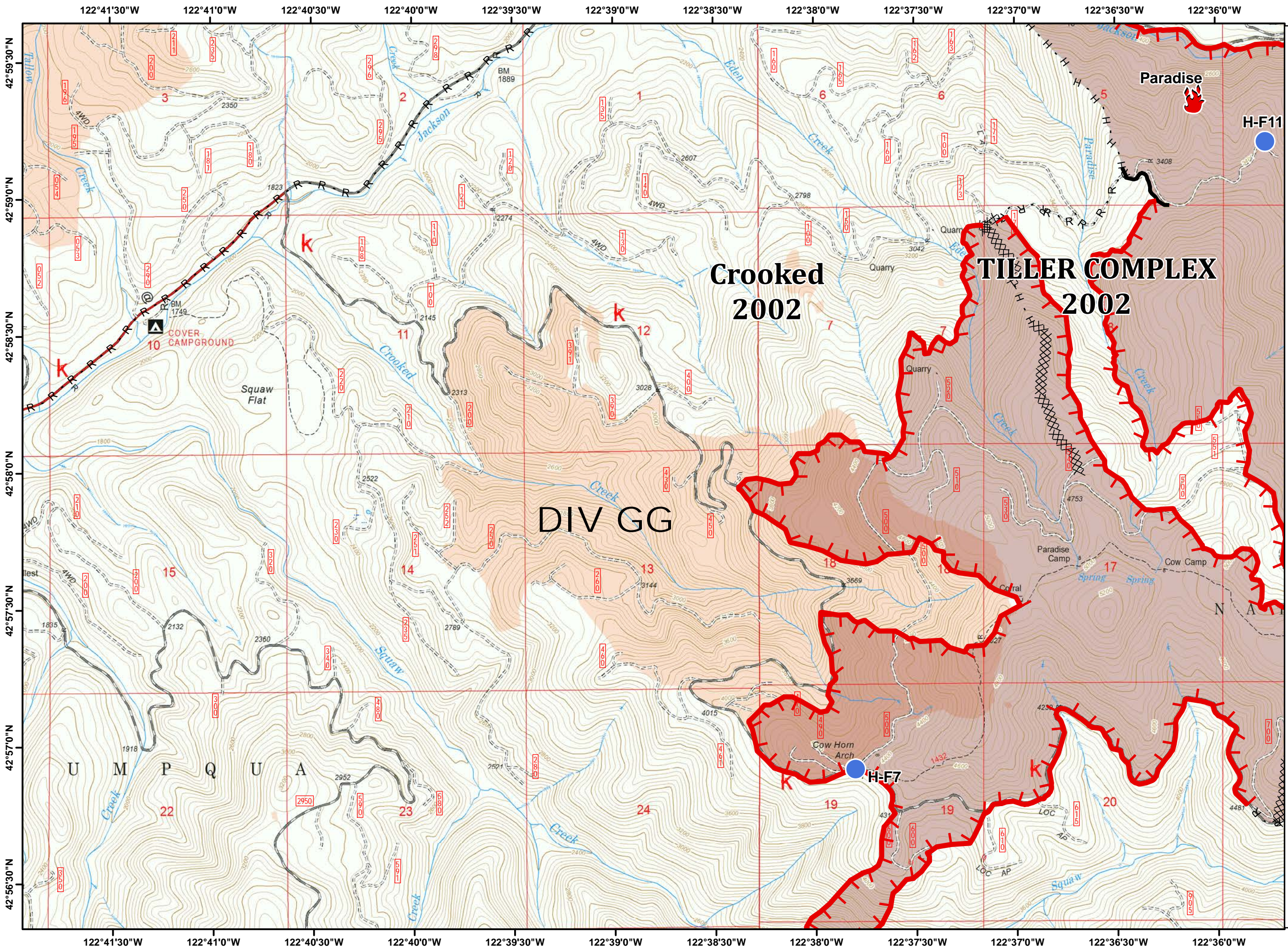
Lookout

Quarry

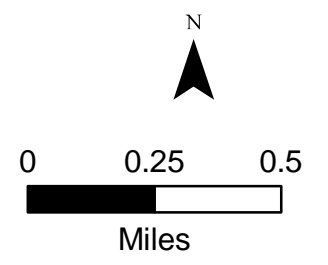
Quarry

Gravel Pit

Gravel Pits

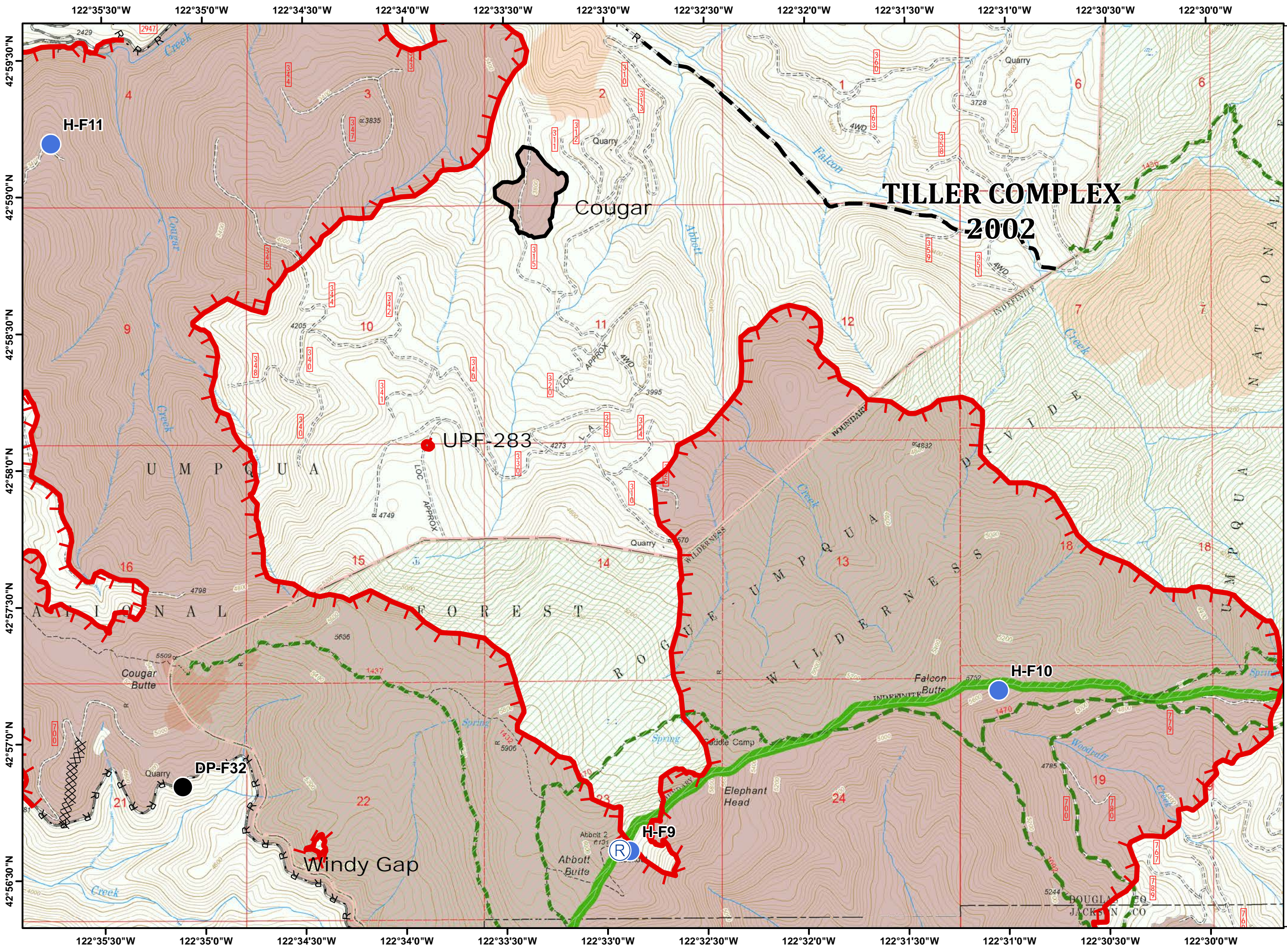


- Fire Location
- Helispot
- Uncontrolled Fire Edge
- Completed Dozer Line
- Completed Line
- H - H - Hand Line
- R - R - Road as Completed Line
- USFS
- Trails
- Fire Area
- Historic Fire Perimeters

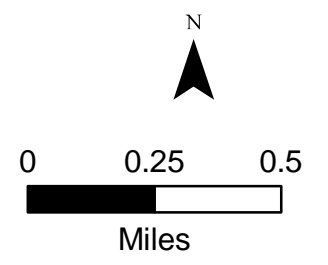


West
High Cascades
IAP

September 9, 2017

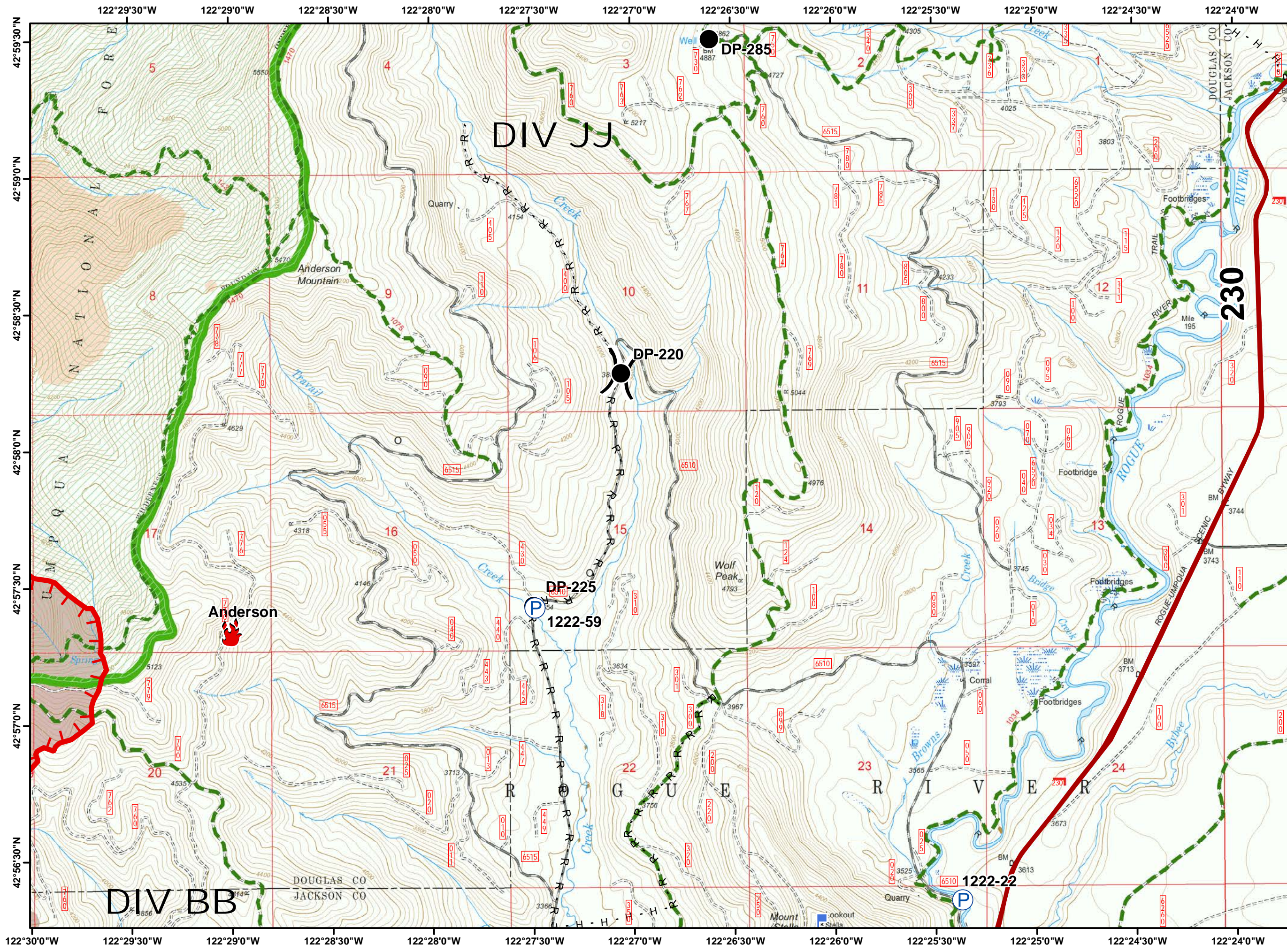


- Drop Point
- Helispot
- Repeater
- Uncontrolled Fire Edge
- Completed Dozer Line
- Completed Line
- Road as Completed Line
- Planned Fire Line
- USFS Wilderness
- Trails
- Fire Area
- Historic Fire Perimeters

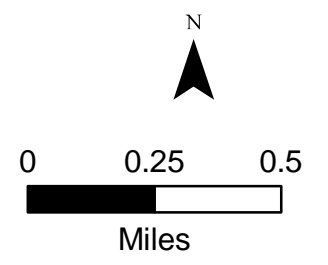


West
High Cascades
IAP

September 9, 2017



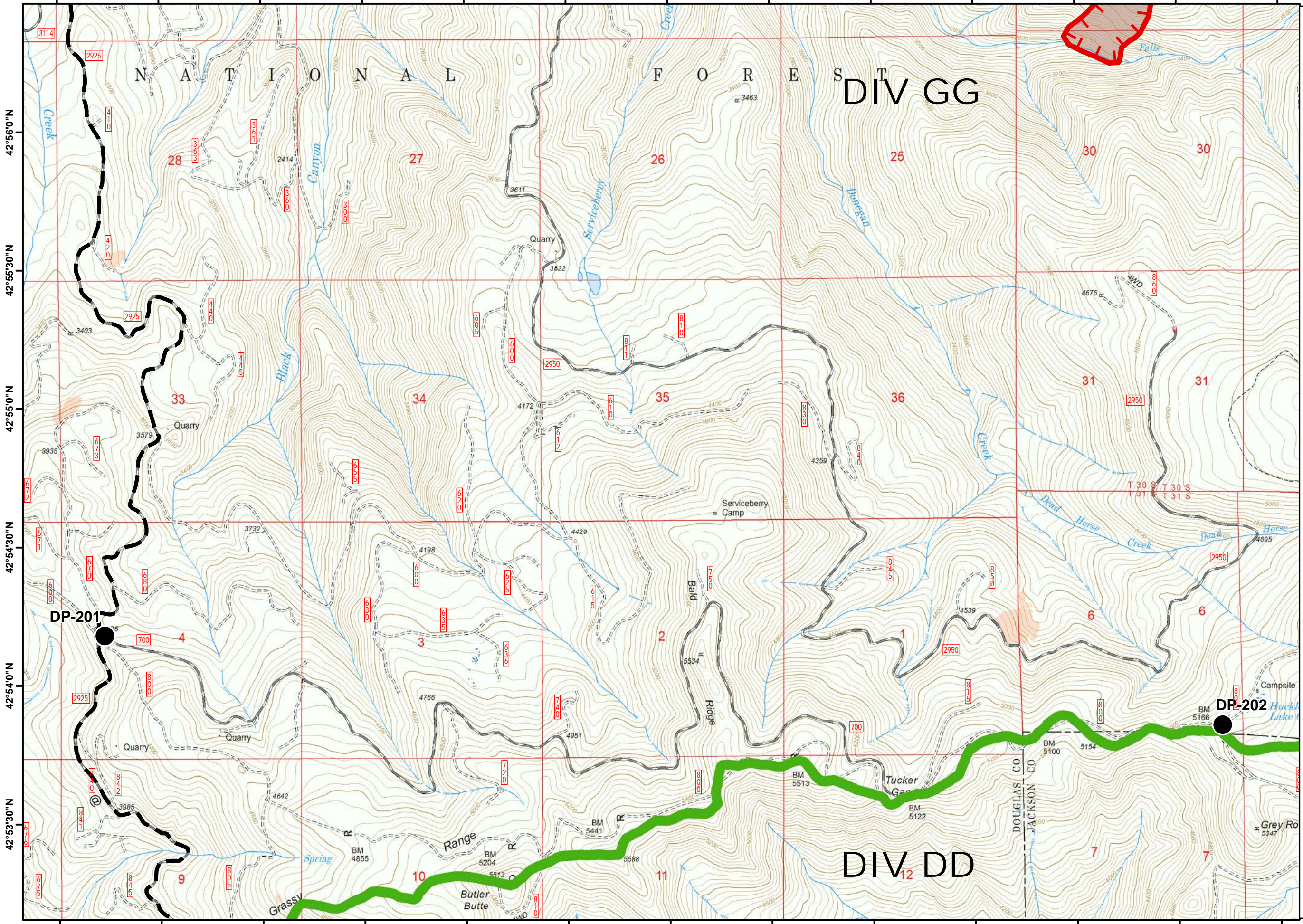
- highways
- Drop Point
- Fire Location
- Lookout
- Pump
- Uncontrolled Fire Edge
- H - H - Hand Line
- R - R - Road as Completed Line
- USFS
- Wilderness
- Trails
- Fire Area
- Historic Fire Perimeters






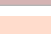



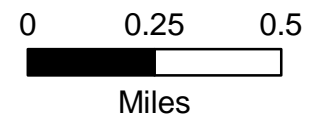
122°43'0"W 122°42'30"W 122°42'0"W 122°41'30"W 122°41'0"W 122°40'30"W 122°40'0"W 122°39'30"W 122°39'0"W 122°38'30"W 122°38'0"W 122°37'30"W 122°37'0"W

West
High Cascades
IAP

September 9, 2017



-  Drop Point
-  Uncontrolled Fire Edge
-  Planned Fire Line
-  USFS
-  Trails
-  Fire Area
-  Historic Fire Perimeters

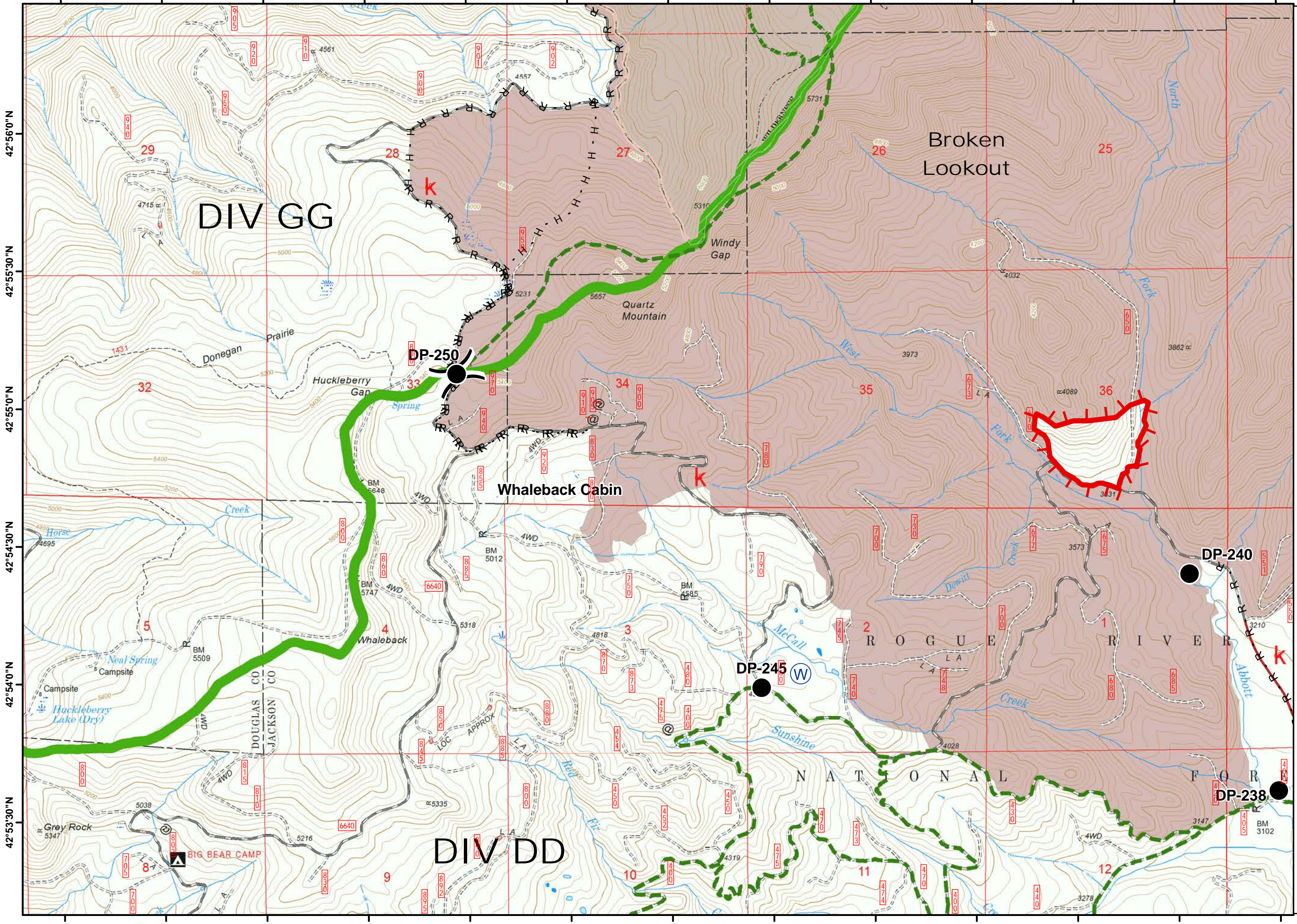


122°43'0"W 122°42'30"W 122°42'0"W 122°41'30"W 122°41'0"W 122°40'30"W 122°40'0"W 122°39'30"W 122°39'0"W 122°38'30"W 122°38'0"W 122°37'30"W 122°37'0"W

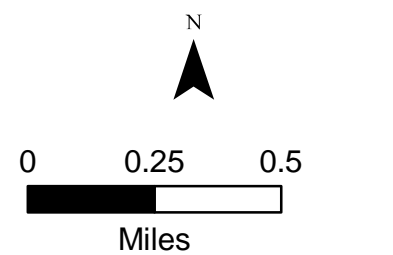
122°37'0"W 122°36'30"W 122°36'0"W 122°35'30"W 122°35'0"W 122°34'30"W 122°34'0"W 122°33'30"W 122°33'0"W 122°32'30"W 122°32'0"W 122°31'30"W 122°31'0"W

West
High Cascades
IAP

September 9, 2017



- Drop Point
- Water Source
- Uncontrolled Fire Edge
- H - H - Hand Line
- R - R - Road as Completed Line
- USFS
- Wilderness
- Trails
- Fire Area

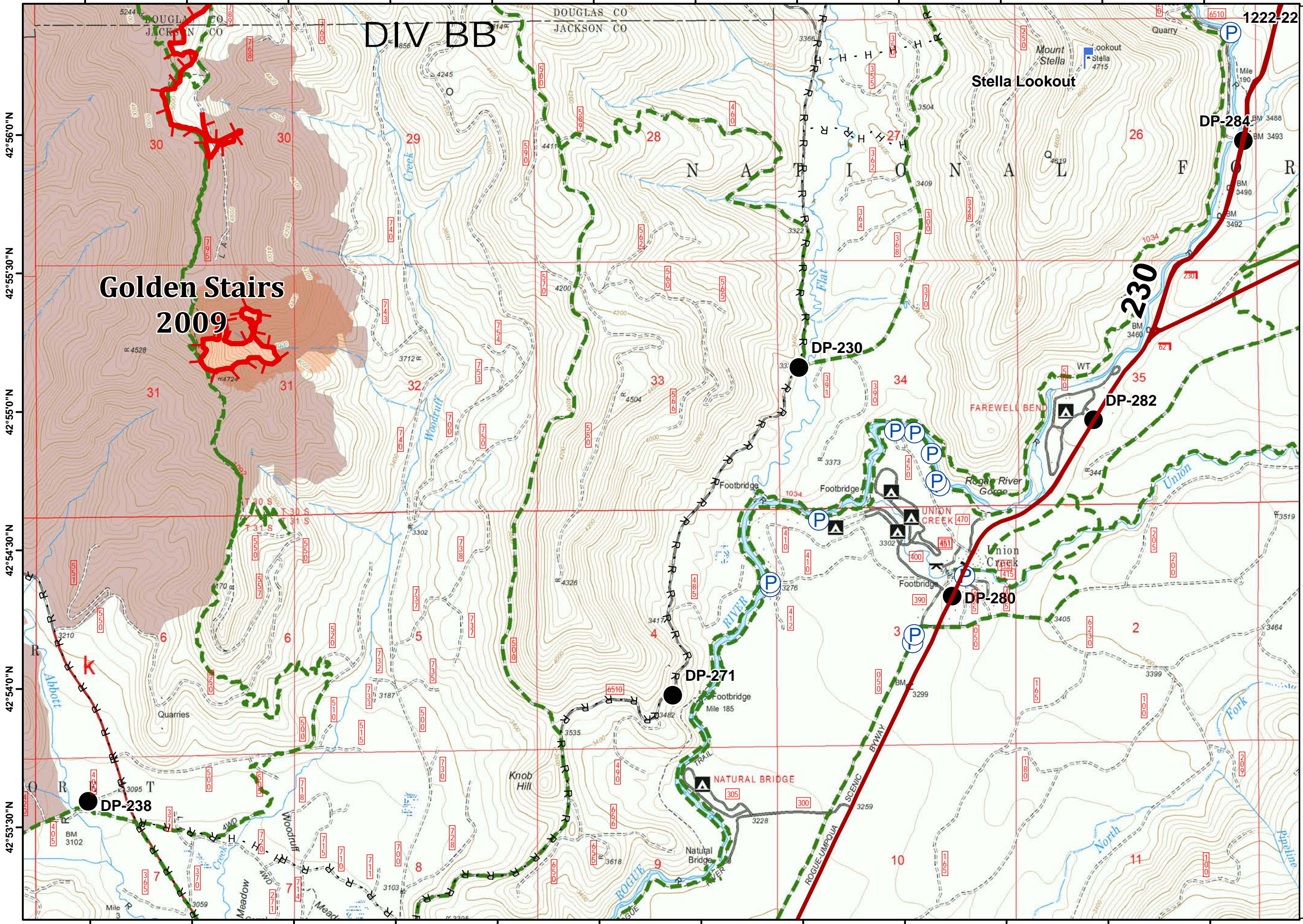


122°37'0"W 122°36'30"W 122°36'0"W 122°35'30"W 122°35'0"W 122°34'30"W 122°34'0"W 122°33'30"W 122°33'0"W 122°32'30"W 122°32'0"W 122°31'30"W 122°31'0"W

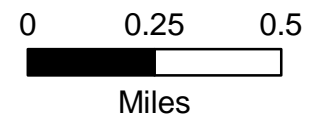
122°31'0"W 122°30'30"W 122°30'0"W 122°29'30"W 122°29'0"W 122°28'30"W 122°28'0"W 122°27'30"W 122°27'0"W 122°26'30"W 122°26'0"W 122°25'30"W

West
High Cascades
IAP

September 9, 2017

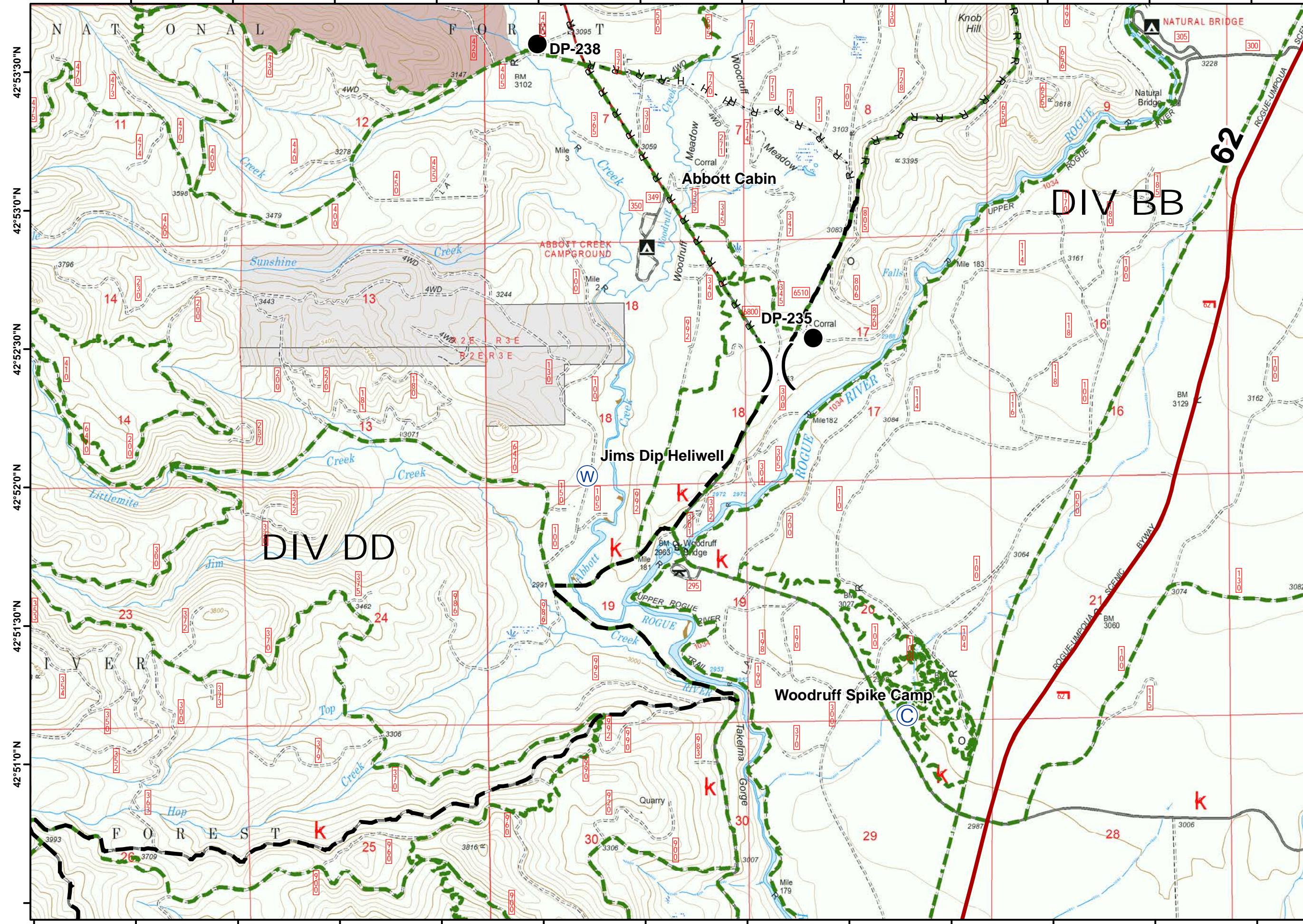


- highways
- Drop Point
- Lookout
- Pump
- Uncontrolled Fire Edge
- Hand Line
- Road as Completed Line
- USFS Trails
- Fire Area
- Historic Fire Perimeters
- Historic Fire Perimeters



122°31'0"W 122°30'30"W 122°30'0"W 122°29'30"W 122°29'0"W 122°28'30"W 122°28'0"W 122°27'30"W 122°27'0"W 122°26'30"W 122°26'0"W 122°25'30"W

122°33'0"W 122°32'30"W 122°32'0"W 122°31'30"W 122°31'0"W 122°30'30"W 122°30'0"W 122°29'30"W 122°29'0"W 122°28'30"W 122°28'0"W 122°27'30"W

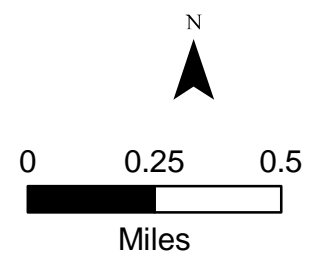


West High Cascades IAP

September 9, 2017



- highways
- Camp
- Drop Point
- Water Source
- H - H - Hand Line
- R - R - Road as Completed Line
- Planned Fire Line
- USFS
- Private
- Trails
- Fire Area



122°33'30"W 122°33'0"W 122°32'30"W 122°32'0"W 122°31'30"W 122°31'0"W 122°30'30"W 122°30'0"W 122°29'30"W 122°29'0"W 122°28'30"W 122°28'0"W 122°27'30"W

High Cascades West OR-RSF-000636

Transportation Map

September 9, 2017

Legend

- ★ Towns
- Helispot
- Drop Point
- ⊕ Helibase
- ▣ Incident Command Post
- ⊙ Camp
- ▣ Lookout
- Ⓡ Repeater
- ⚠ Safety Zone
- Ⓢ Staging Area
- Ⓜ Water Source
- ▬ Highways
- ▬ Fires
- ▬ Roads

