

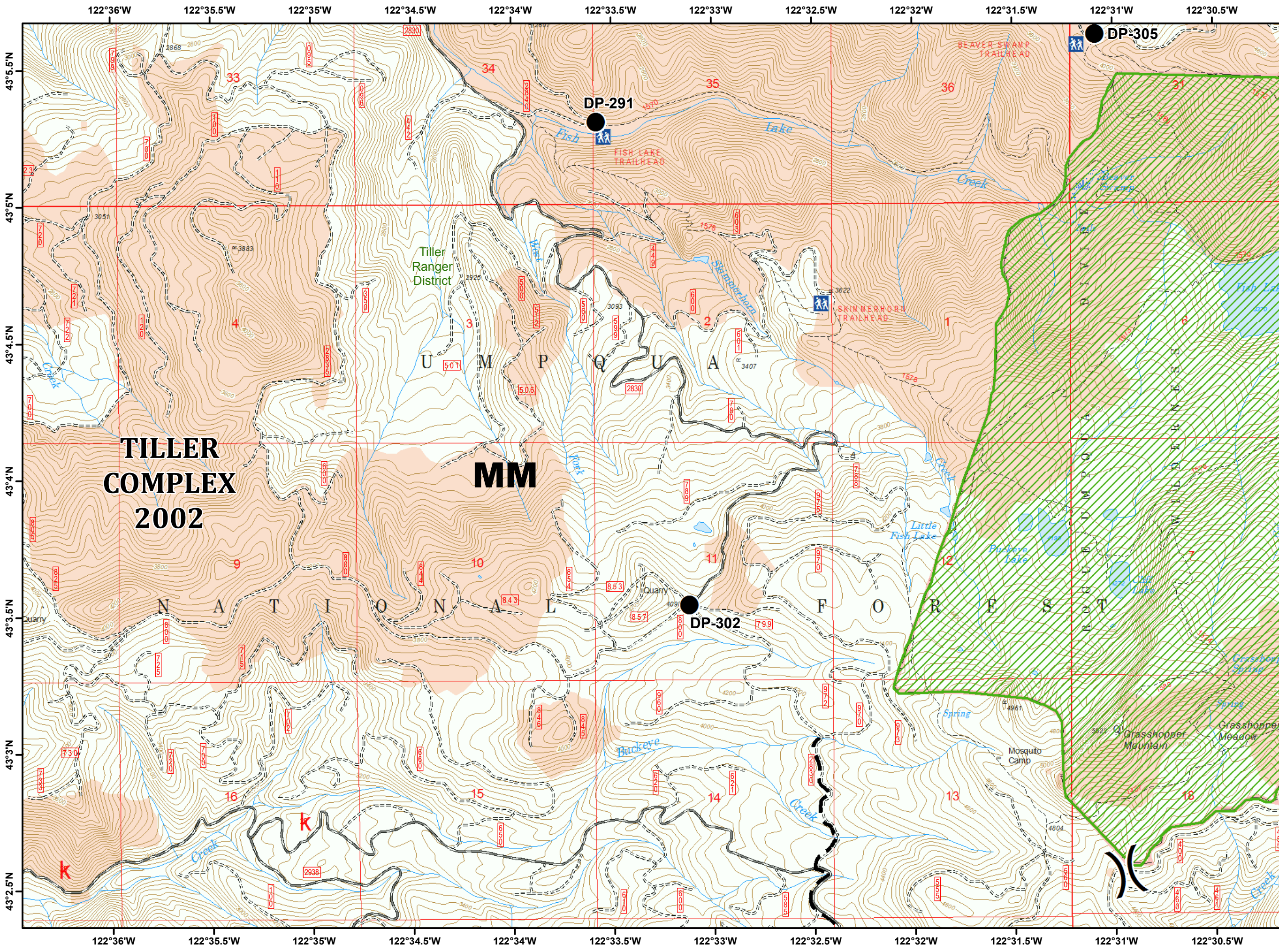
High Cascades Complex West Zone

IAP Index

September 13, 2017



Index




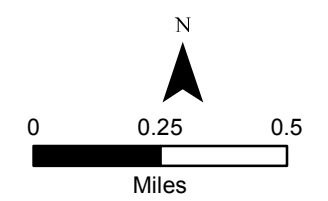
West Zone

High Cascades
Complex
IAP

September 13, 2017

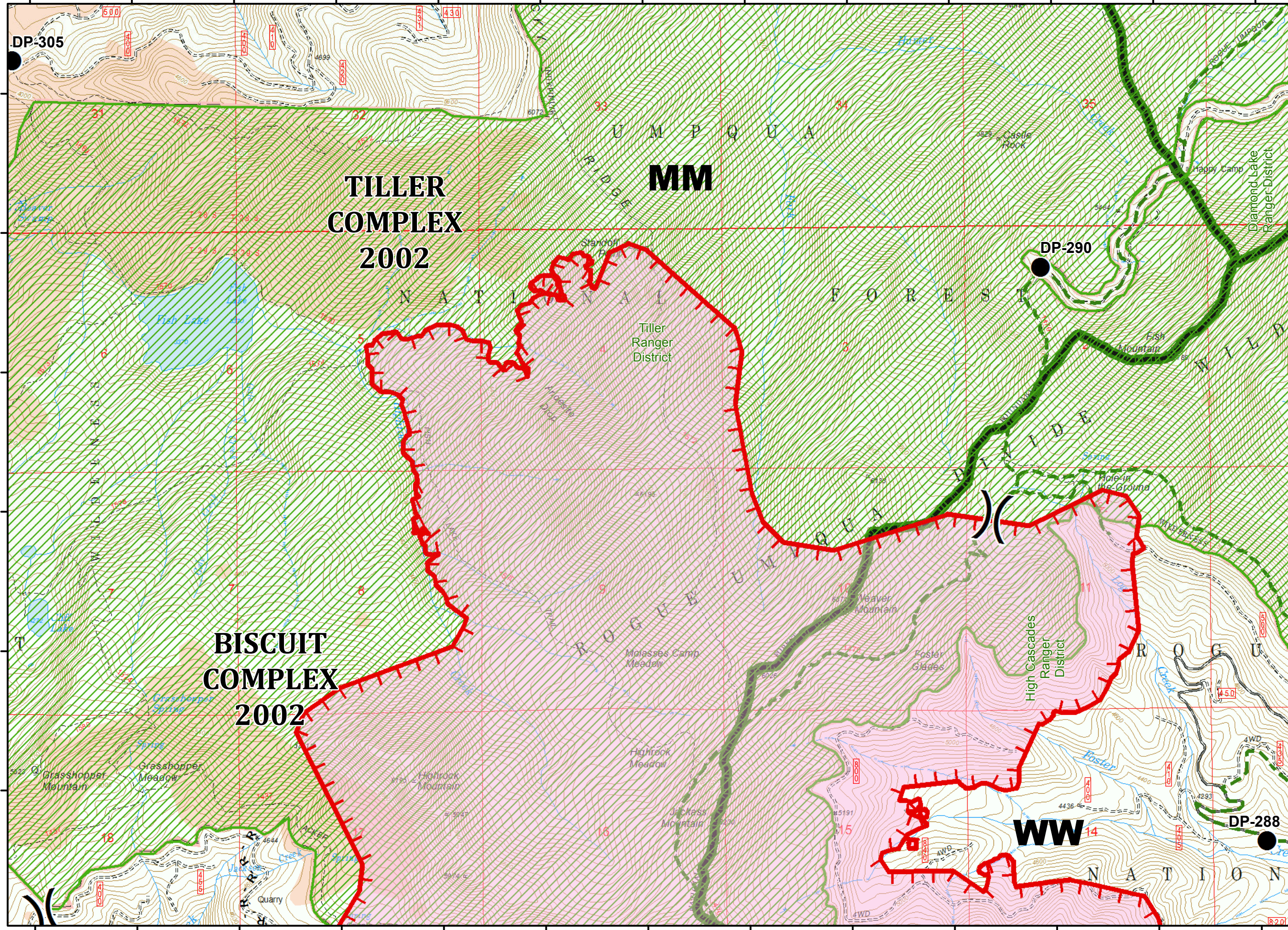


-  Drop Point
-  Planned Fire Line
-  Trailhead
-  Trails
-  Wilderness
-  Ranger District Boundary
-  Historic Fire Perimeters

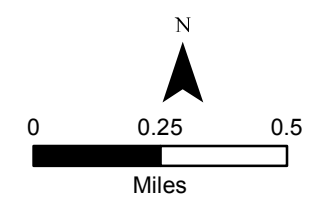


Datum NAD 83
web 0912

122°31'W 122°30.5'W 122°30'W 122°29.5'W 122°29'W 122°28.5'W 122°28'W 122°27.5'W 122°27'W 122°26.5'W 122°26'W 122°25.5'W 122°25'W



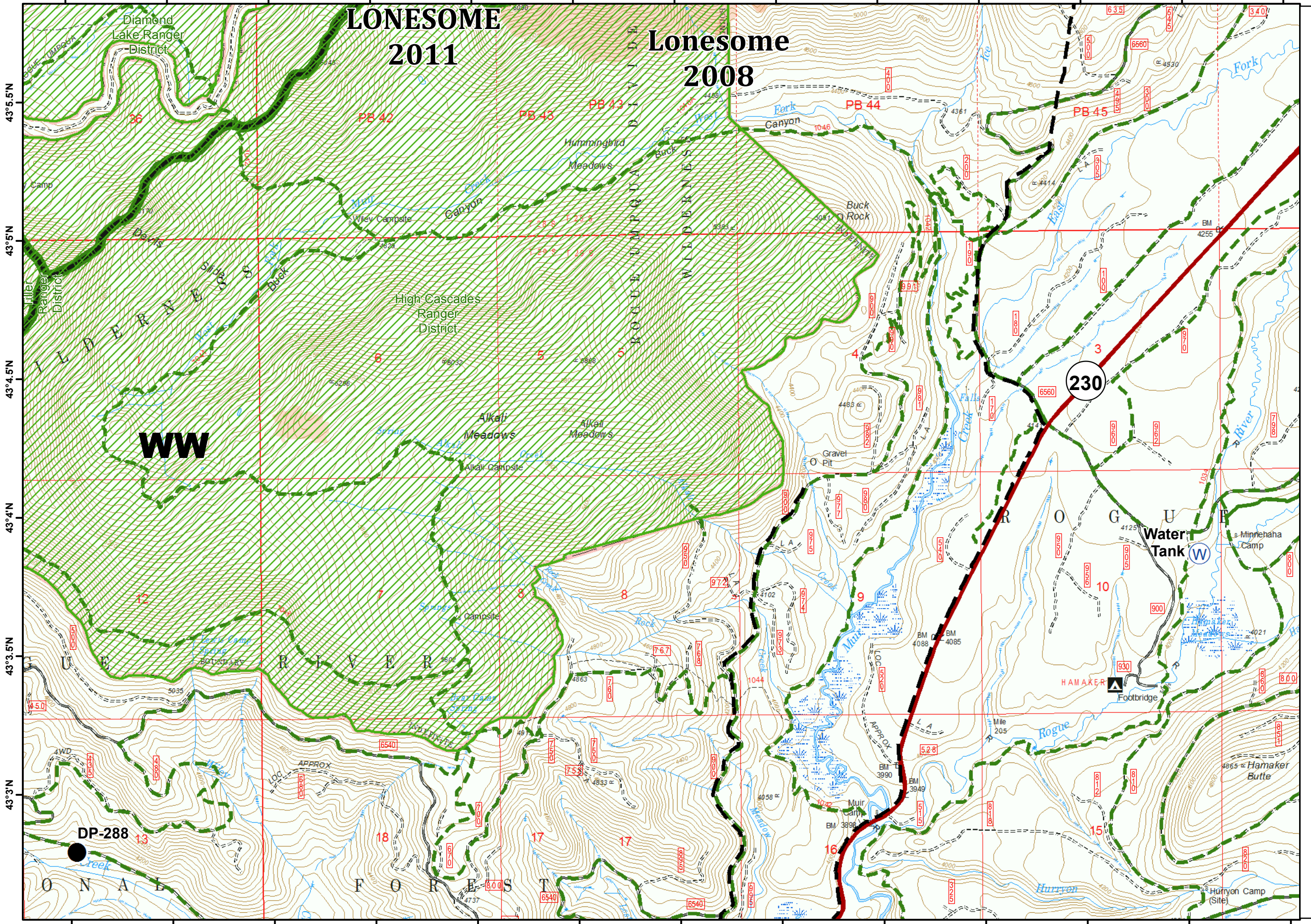
- Drop Point
- Uncontrolled Fire Edge
- R - R - Road as Completed Line
- Campsite
- Trails
- Wilderness
- Ranger District Boundary
- Fire Area
- Historic Fire Perimeters
- Historic Fire Perimeters



Datum NAD 83 web 0912

122°31'W 122°30.5'W 122°30'W 122°29.5'W 122°29'W 122°28.5'W 122°28'W 122°27.5'W 122°27'W 122°26.5'W 122°26'W 122°25.5'W 122°25'W

122°25'W 122°24.5'W 122°24'W 122°23.5'W 122°23'W 122°22.5'W 122°22'W 122°21.5'W 122°21'W 122°20.5'W 122°20'W 122°19.5'W 122°19'W

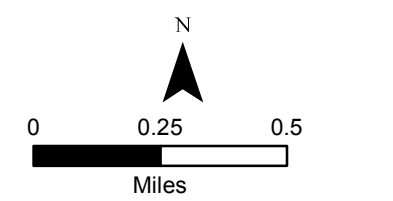


Page : 3W
West Zone
High Cascades Complex IAP

September 13, 2017



-  Drop Point
-  Water Source
-  Planned Fire Line
-  Campground
-  Campsite
-  highways
-  Trails
-  Wilderness
-  Ranger District Boundary
-  Historic Fire Perimeters
-  Historic Fire Perimeters

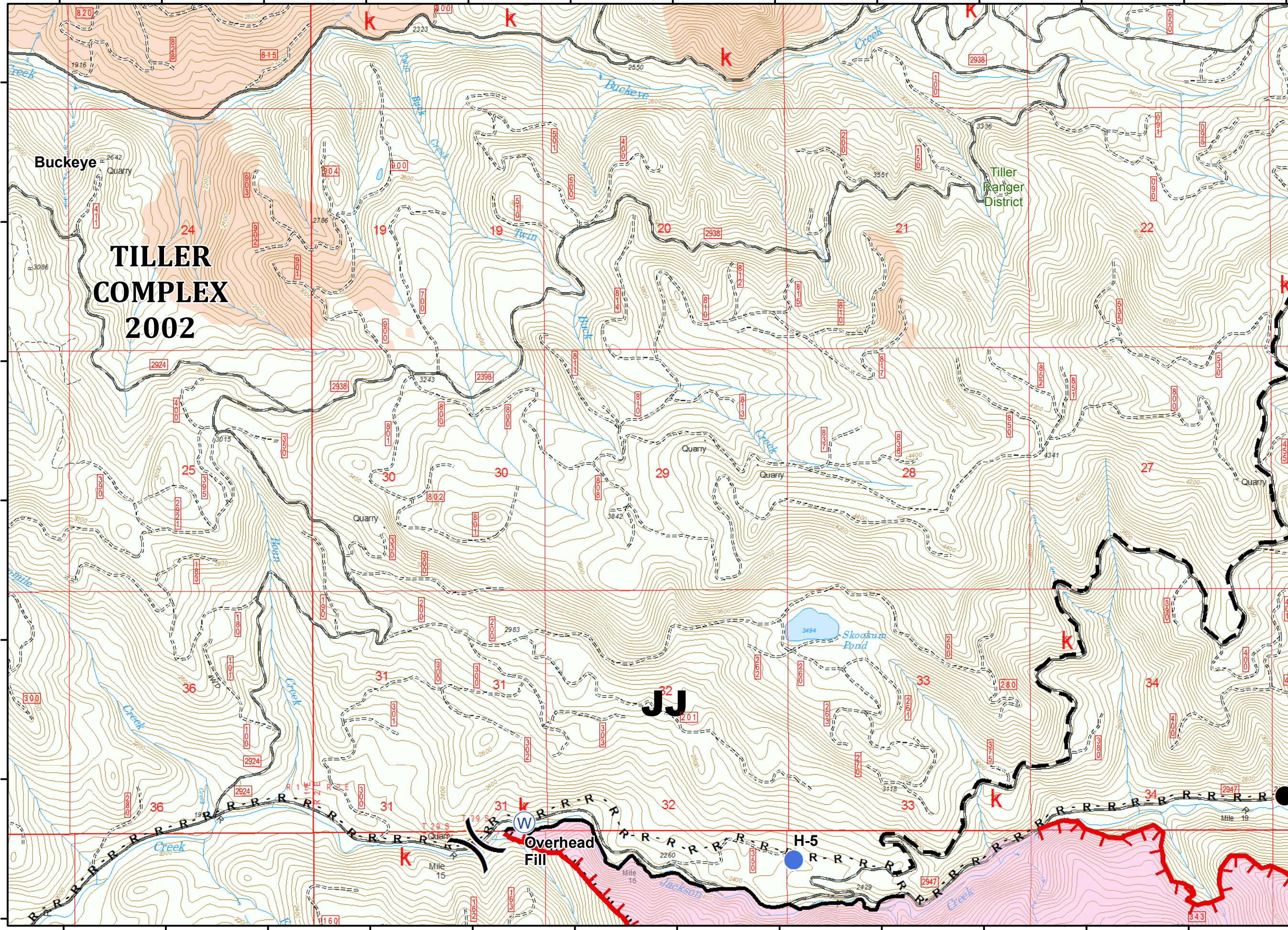


Datum NAD 83
web 0912

122°25'W 122°24.5'W 122°24'W 122°23.5'W 122°23'W 122°22.5'W 122°22'W 122°21.5'W 122°21'W 122°20.5'W 122°20'W 122°19.5'W 122°19'W

122°39.5'W 122°39'W 122°38.5'W 122°38'W 122°37.5'W 122°37'W 122°36.5'W 122°36'W 122°35.5'W 122°35'W 122°34.5'W 122°34'W 122°33.5'W

43°2.5'N
43°2'N
43°1.5'N
43°1'N
43°0.5'N
43°0'N
42°59.5'N





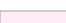
Page : 4W

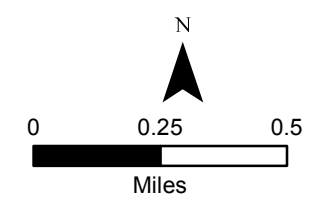
West Zone

High Cascades
Complex
IAP

September 13, 2017

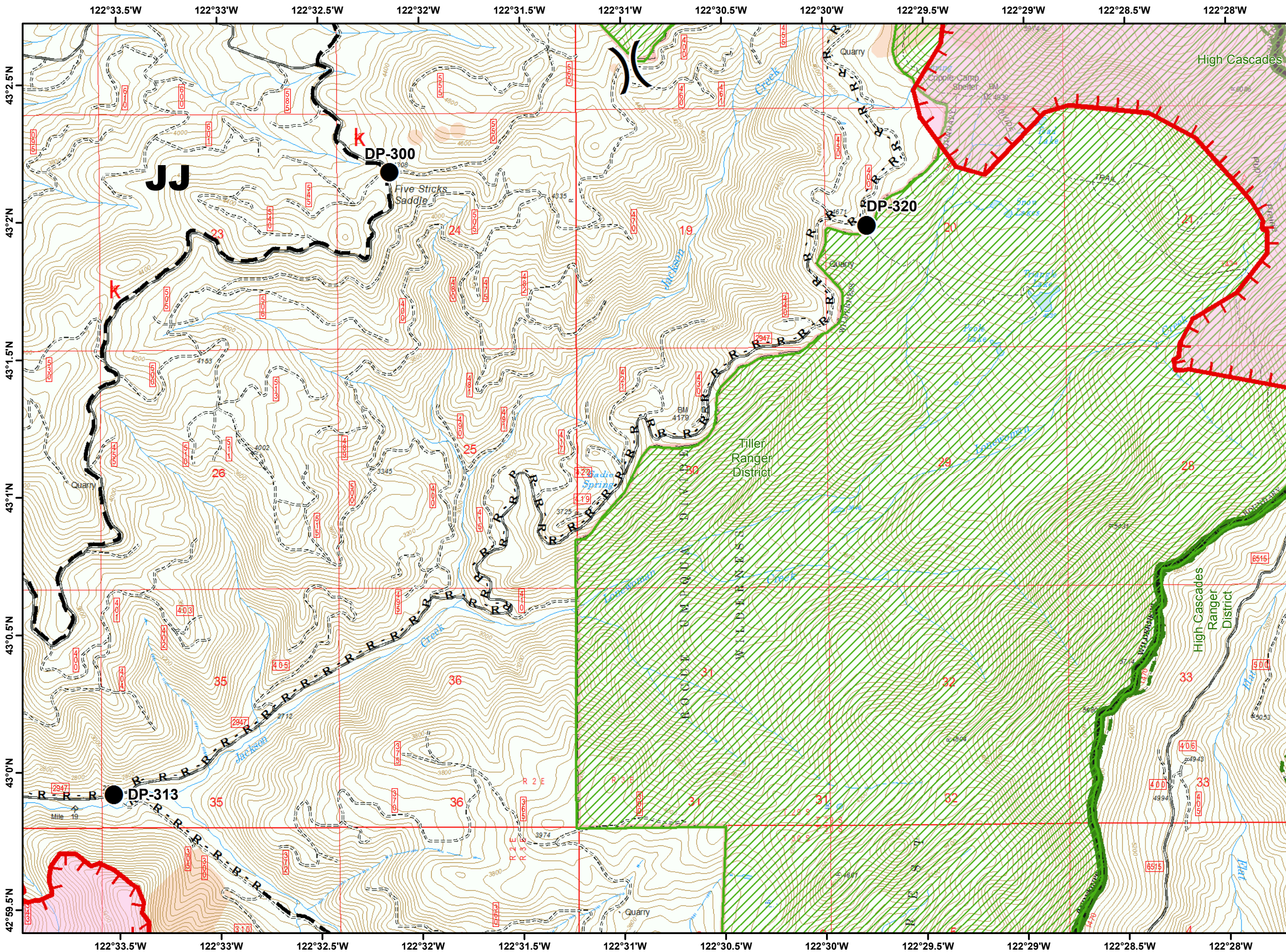


-  Drop Point
-  Helispot
-  Water Source
-  Uncontrolled Fire Edge
-  Completed Line
-  H - H - Hand Line
-  R - R - Road as Completed Line
-  Planned Fire Line
-  Trails
-  Ranger District Boundary
-  Fire Area
-  Historic Fire Perimeters

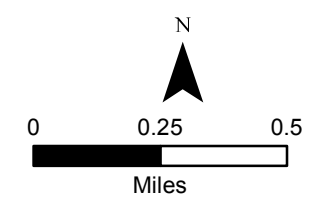


Datum NAD 83
web 0912

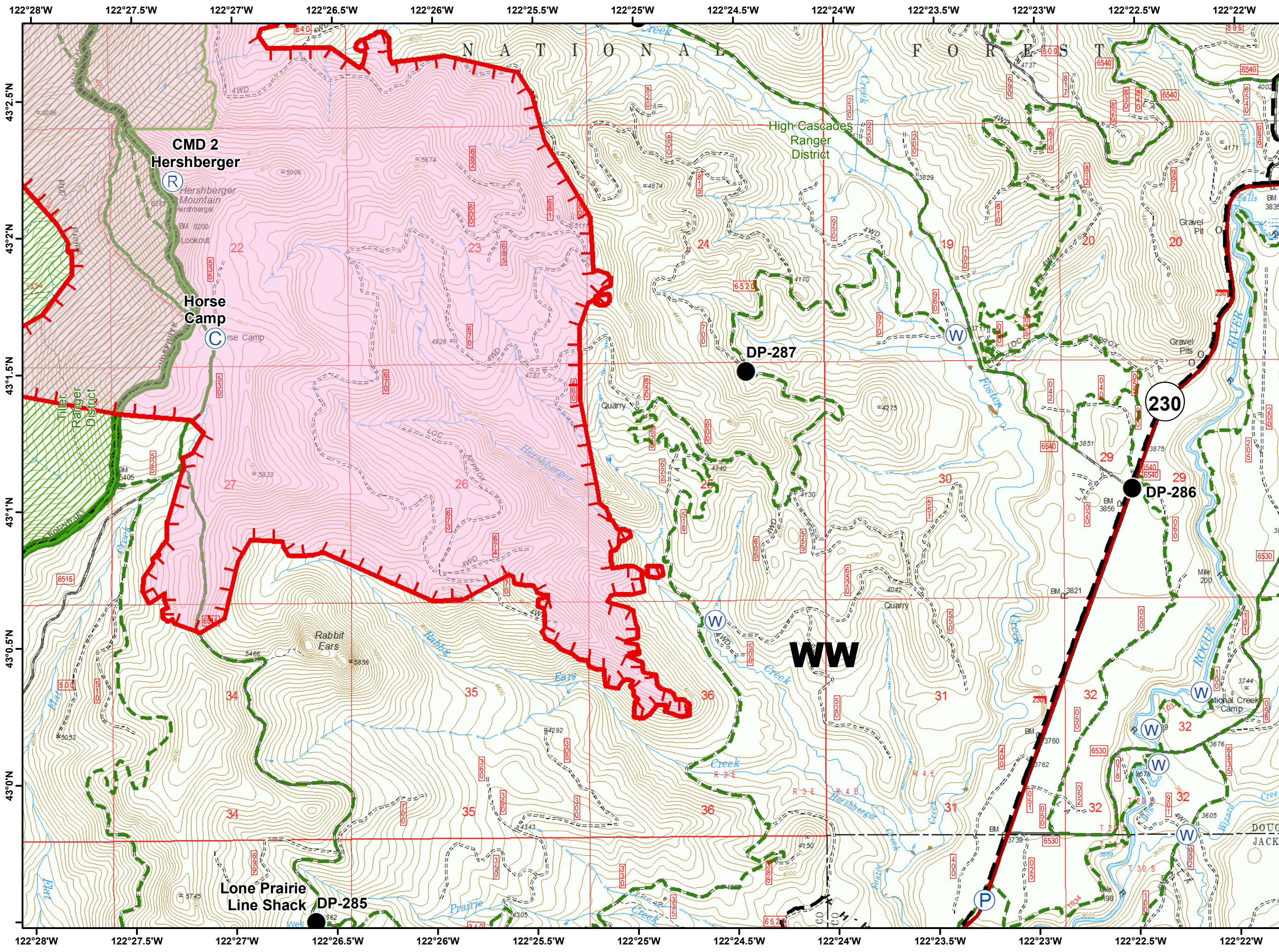
122°39.5'W 122°39'W 122°38.5'W 122°38'W 122°37.5'W 122°37'W 122°36.5'W 122°36'W 122°35.5'W 122°35'W 122°34.5'W 122°34'W 122°33.5'W



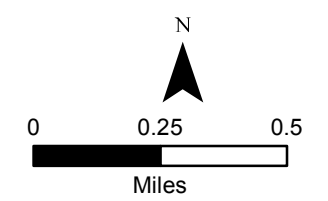
- Drop Point
- Uncontrolled Fire Edge
- Road as Completed Line
- Planned Fire Line
- Picnic Area
- Trails
- Wilderness
- Ranger District Boundary
- Fire Area
- Historic Fire Perimeters



Datum NAD 83 web 0912



- C Camp
- Drop Point
- P Pump
- R Repeater
- W Water Source
- Uncontrolled Fire Edge
- H - H - Hand Line
- Planned Fire Line
- Campsite
- highways
- Trails
- Wilderness
- Ranger District Boundary
- Fire Area

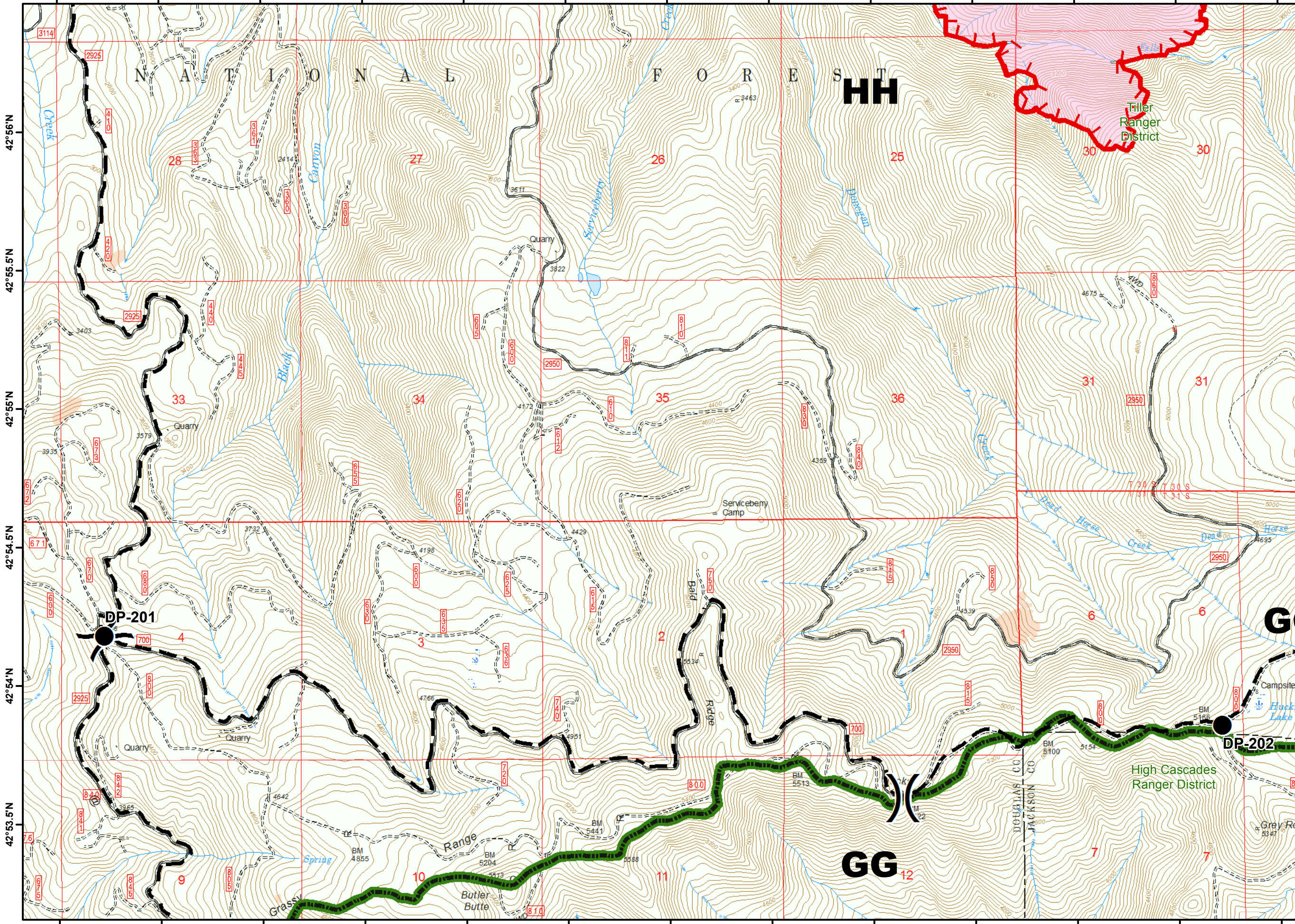



122°43'W 122°42.5'W 122°42'W 122°41.5'W 122°41'W 122°40.5'W 122°40'W 122°39.5'W 122°39'W 122°38.5'W 122°38'W 122°37.5'W 122°37'W

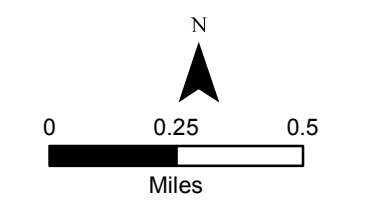
West Zone

High Cascades Complex IAP

September 13, 2017



-  Drop Point
-  Uncontrolled Fire Edge
-  Planned Fire Line
-  Campsite
-  Trails
-  Ranger District Boundary
-  Fire Area
-  Historic Fire Perimeters



Datum NAD 83 web 0912

122°43'W 122°42.5'W 122°42'W 122°41.5'W 122°41'W 122°40.5'W 122°40'W 122°39.5'W 122°39'W 122°38.5'W 122°38'W 122°37.5'W 122°37'W

122°37'W 122°36.5'W 122°36'W 122°35.5'W 122°35'W 122°34.5'W 122°34'W 122°33.5'W 122°33'W 122°32.5'W 122°32'W 122°31.5'W 122°31'W

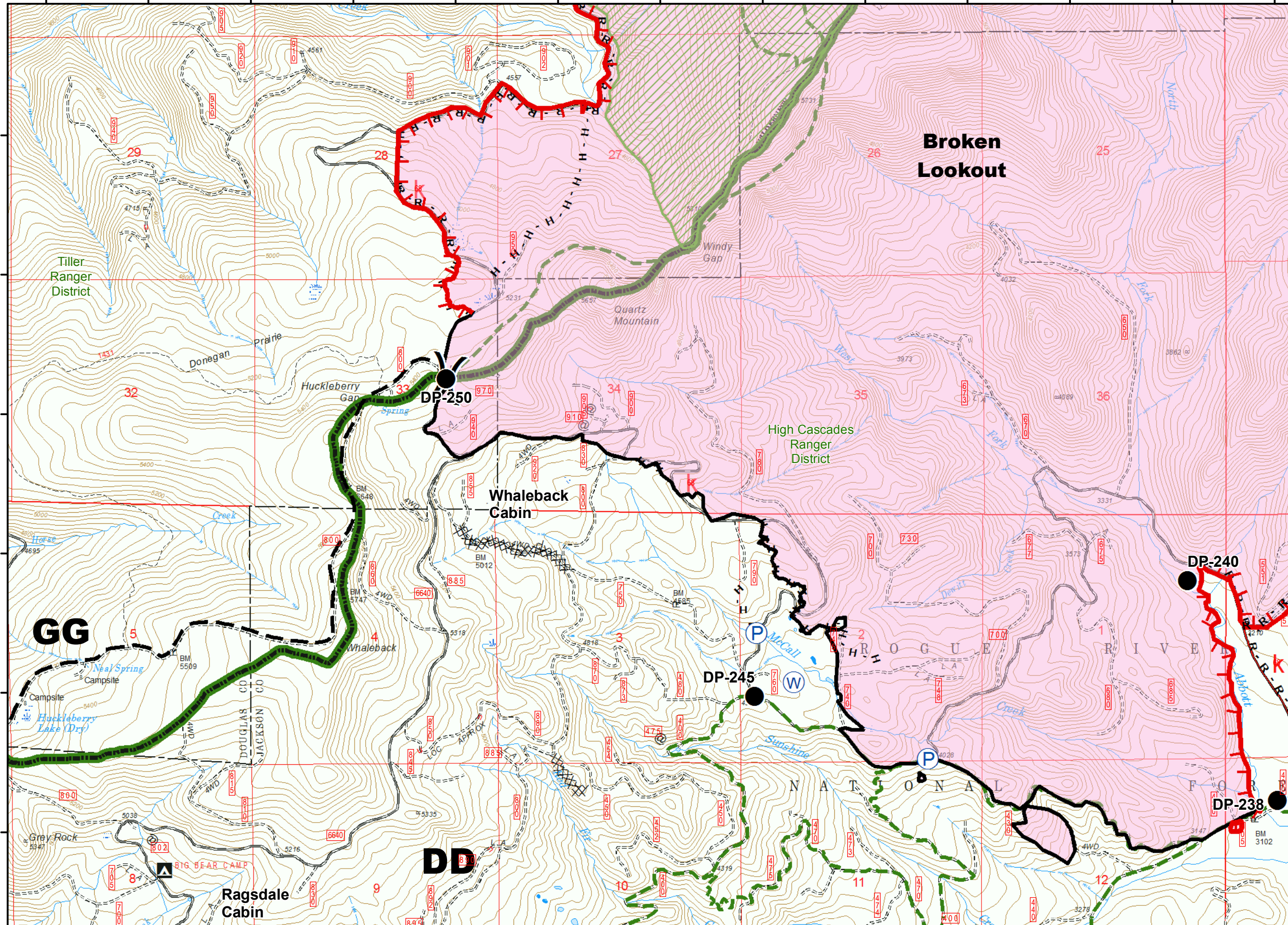
West Zone

High Cascades Complex IAP

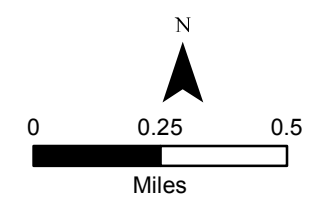
September 13, 2017



42°56'N
42°55.5'N
42°55'N
42°54.5'N
42°54'N
42°53.5'N



- Drop Point
- Pump
- Water Source
- Uncontrolled Fire Edge
- Completed Dozer Line
- Completed Line
- Hand Line
- Road as Completed Line
- Planned Fire Line
- Campground
- Campsite
- Trails
- Wilderness
- Ranger District Boundary
- Fire Area

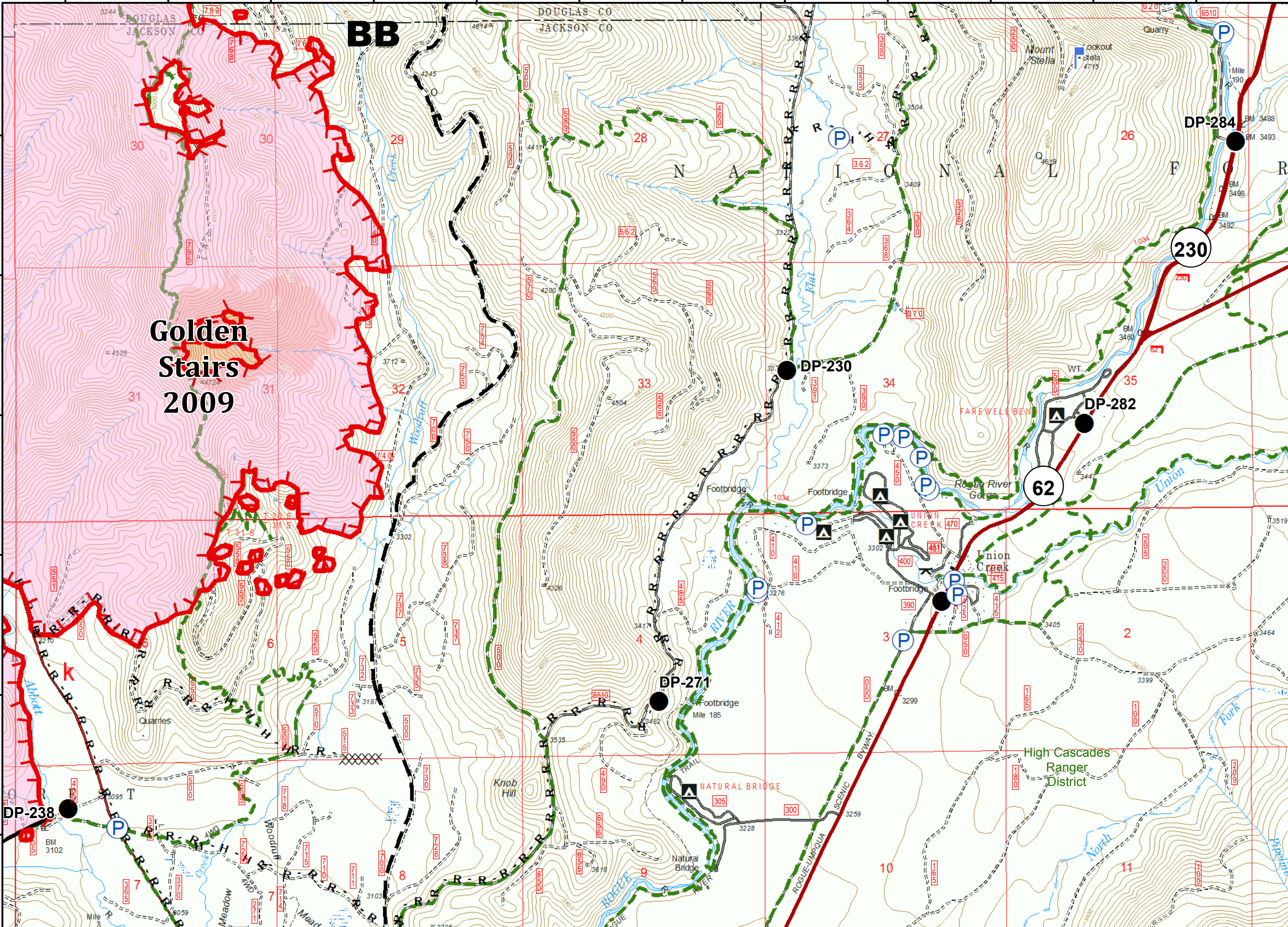


Datum NAD 83 web 0912

122°37'W 122°36.5'W 122°36'W 122°35.5'W 122°35'W 122°34.5'W 122°34'W 122°33.5'W 122°33'W 122°32.5'W 122°32'W 122°31.5'W 122°31'W

122°31'W 122°30.5'W 122°30'W 122°29.5'W 122°29'W 122°28.5'W 122°28'W 122°27.5'W 122°27'W 122°26.5'W 122°26'W 122°25.5'W

42°56'N
42°55.5'N
42°55'N
42°54.5'N
42°54'N
42°53.5'N









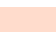

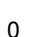


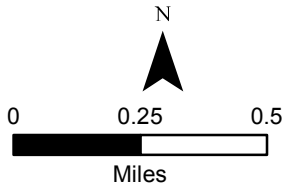
West Zone

High Cascades
Complex
IAP

September 13, 2017



-  Drop Point
-  Lookout
-  Pump
-  Uncontrolled Fire Edge
-  Completed Dozer Line
-  Completed Line
-  Hand Line
-  Road as Completed Line
-  Planned Fire Line
-  Campground
-  Picnic Area
-  highways
-  Trails
-  Ranger District Boundary
-  Fire Area
-  Historic Fire Perimeters
-  Historic Fire Perimeters



Datum NAD 83
web 0912

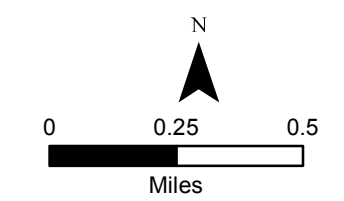
122°31'W 122°30.5'W 122°30'W 122°29.5'W 122°29'W 122°28.5'W 122°28'W 122°27.5'W 122°27'W 122°26.5'W 122°26'W 122°25.5'W

West Zone
High Cascades
Complex
IAP

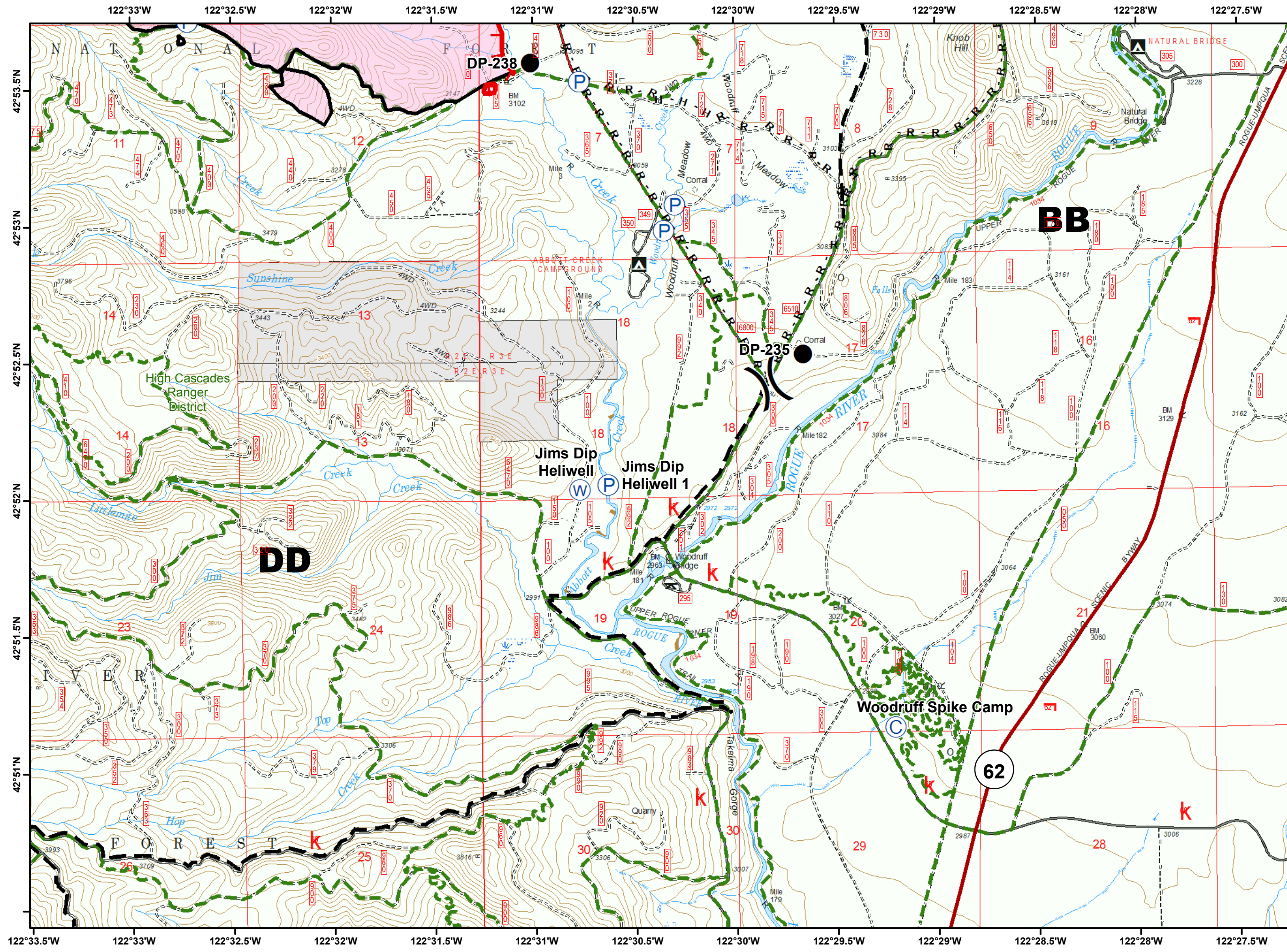
September 13, 2017

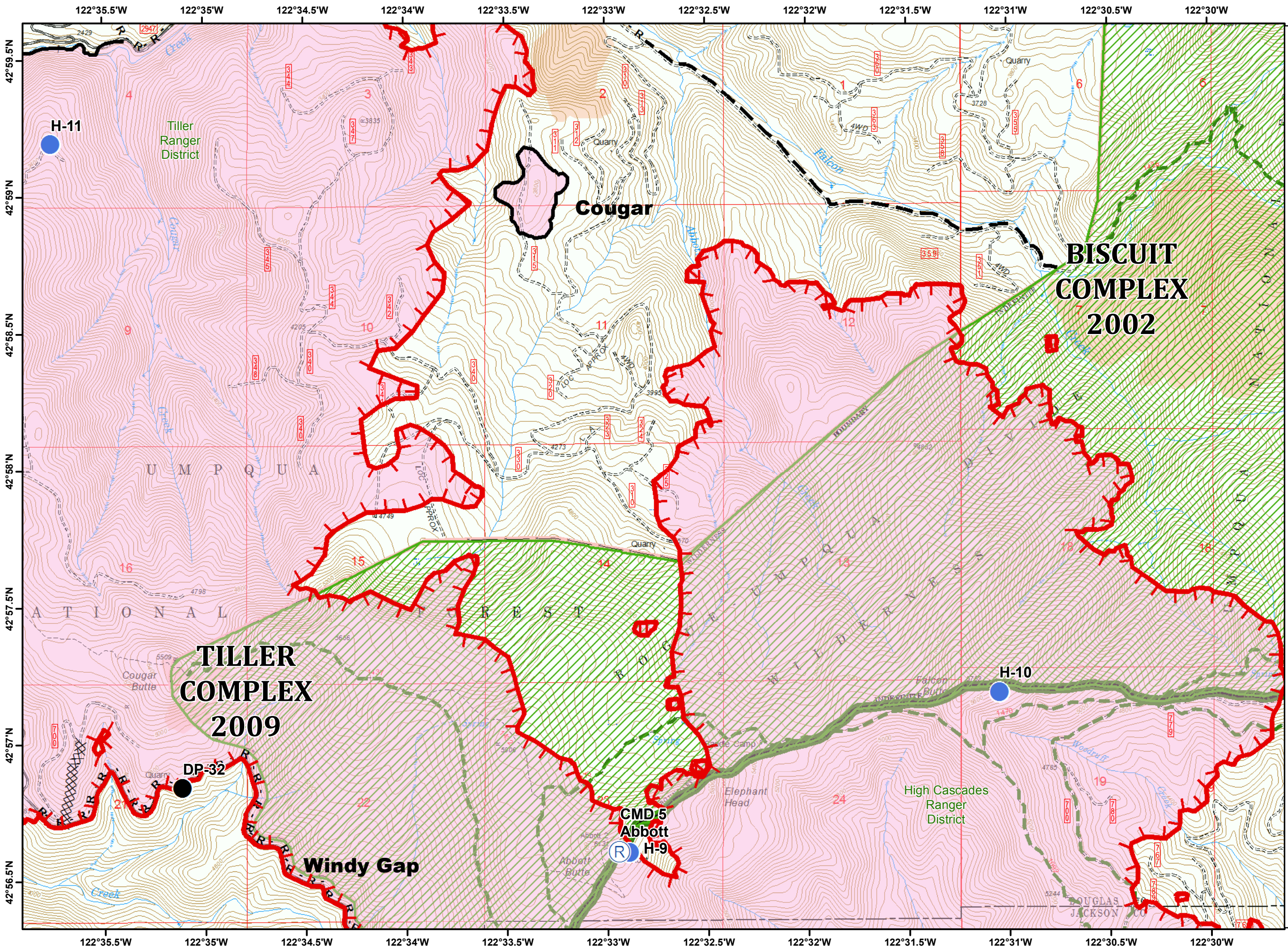


- Camp
- Drop Point
- Pump
- Water Source
- Uncontrolled Fire Edge
- Completed Line
- H - H - Hand Line
- R - R - Road as Completed Line
- Planned Fire Line
- Campground
- Picnic Area
- highways
- Trails
- Ranger District Boundary
- Fire Area

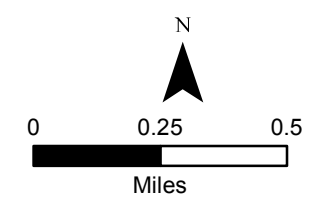


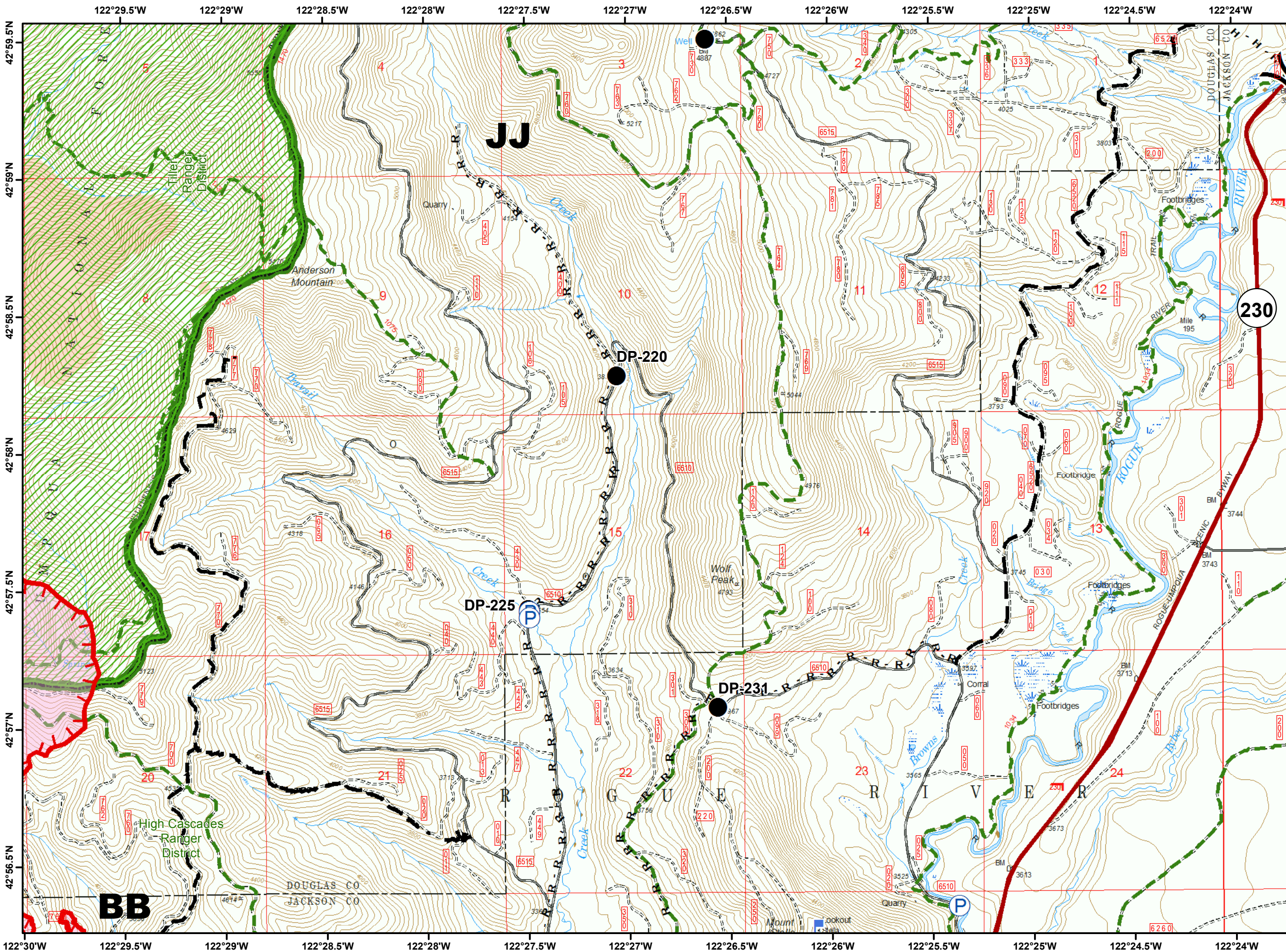
Datum NAD 83
web 0912



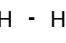
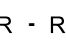









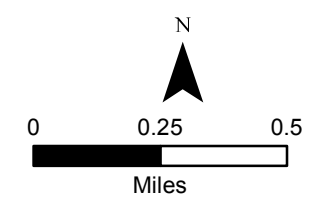


-  Drop Point
-  Helispot
-  Repeater
-  Uncontrolled Fire Edge
-  Completed Dozer Line
-  Completed Line
-  R - R - Road as Completed Line
-  Planned Fire Line
-  Campsite
-  Trails
-  Wilderness
-  Ranger District Boundary
-  Fire Area
-  Historic Fire Perimeters





-  Drop Point
-  Lookout
-  Pump
-  Uncontrolled Fire Edge
-  H - H - Hand Line
-  R - R - Road as Completed Line
-  Planned Fire Line
-  highways
-  Trails
-  Wilderness
-  Ranger District Boundary
-  Fire Area
-  Historic Fire Perimeters



Datum NAD 83
web 0912

**High Cascades Complex
West Zone
OR-RSF-000636**

Transportation Map

September 13, 2017

Legend

- ★ Towns
- Helispot
- Drop Point
- ⊕ Helibase
- ▣ Incident Command Post
- ⊙ Camp
- ▣ Lookout
- Ⓡ Repeater
- ⚠ Safety Zone
- Ⓢ Staging Area
- Ⓜ Water Source
- ▬ Highways
- ▬ Fires
- ▬ Roads

