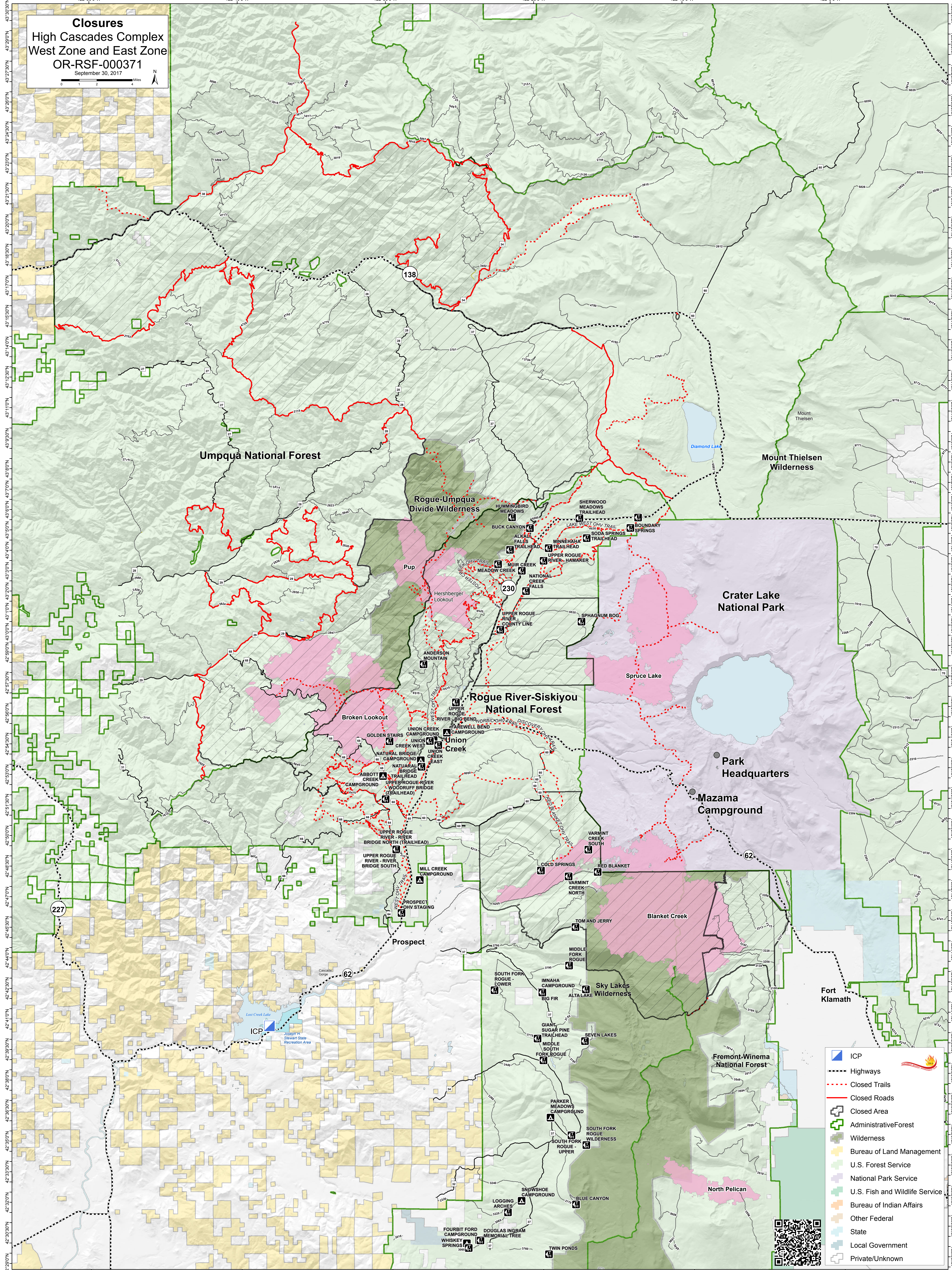
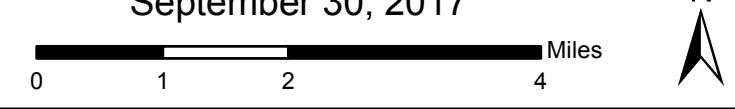


**Closures**  
**High Cascades Complex**  
**West Zone and East Zone**  
**OR-RSF-000371**  
 September 30, 2017



- ICP
- Highways
- Closed Trails
- Closed Roads
- Closed Area
- Administrative Forest
- Wilderness
- Bureau of Land Management
- U.S. Forest Service
- National Park Service
- U.S. Fish and Wildlife Service
- Bureau of Indian Affairs
- Other Federal
- State
- Local Government
- Private/Unknown



43°30'00"N  
43°28'00"N  
43°26'00"N  
43°24'00"N  
43°22'00"N  
43°20'00"N  
43°18'00"N  
43°16'00"N  
43°14'00"N  
43°12'00"N  
43°10'00"N  
43°08'00"N  
43°06'00"N  
43°04'00"N  
43°02'00"N  
43°00'00"N  
42°58'00"N  
42°56'00"N  
42°54'00"N  
42°52'00"N  
42°50'00"N  
42°48'00"N  
42°46'00"N  
42°44'00"N  
42°42'00"N  
42°40'00"N  
42°38'00"N  
42°36'00"N  
42°34'00"N  
42°32'00"N  
42°30'00"N  
42°28'00"N  
42°26'00"N  
42°24'00"N  
42°22'00"N  
42°20'00"N  
42°18'00"N  
42°16'00"N  
42°14'00"N  
42°12'00"N  
42°10'00"N  
42°08'00"N  
42°06'00"N  
42°04'00"N  
42°02'00"N  
42°00'00"N

122°50'00"W  
122°40'00"W  
122°30'00"W  
122°20'00"W  
122°10'00"W  
122°00'00"W