

# Decision Support for Aerial Fire Retardant Avoidance

## Rogue River-Siskiyou National Forests

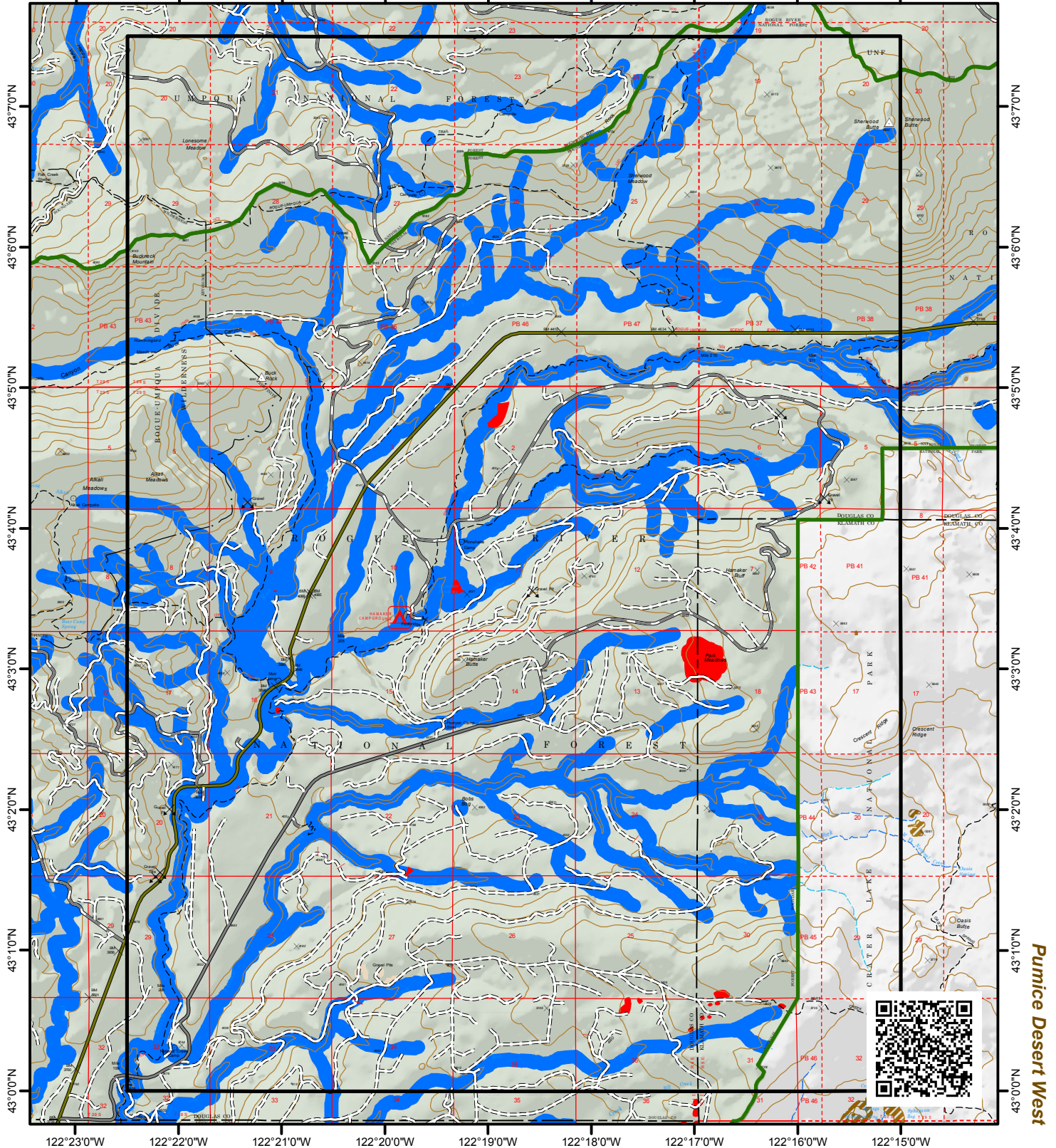
### Hamaker Butte Quad

Garwood Butte

Hamaker Butte Quad

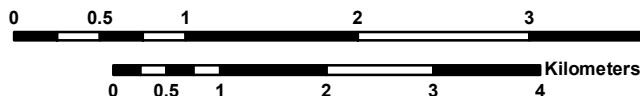
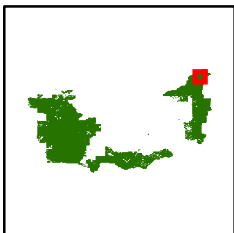
122°23'0"W 122°22'0"W 122°21'0"W 122°20'0"W 122°19'0"W 122°18'0"W 122°17'0"W 122°16'0"W 122°15'0"W

Fish Mountain



Pumice Desert West

Thousand Springs



Note: This map is solely intended to depict relevant Threatened, Endangered, Proposed, Candidate, and Sensitive Species, along with streams and water bodies as a planning tool for decisions with regard to aerial fire retardant avoidance.

March 16, 2017