

Decision Support for Aerial Fire Retardant Avoidance

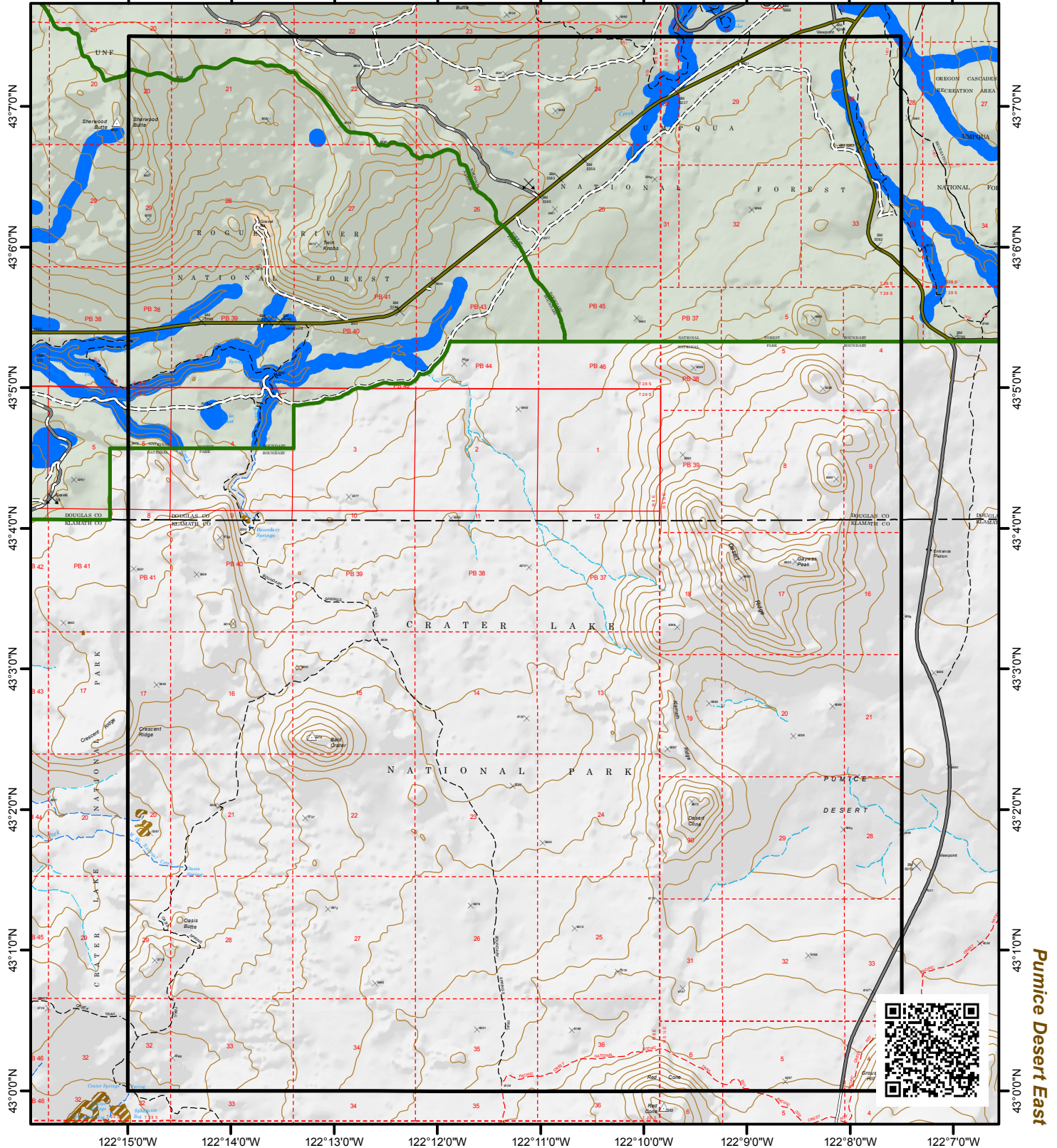
Rogue River-Siskiyou National Forests

Pumice Desert West Quad

Diamond Lake

122°15'0"W 122°14'0"W 122°13'0"W 122°12'0"W 122°11'0"W 122°10'0"W 122°9'0"W 122°8'0"W 122°7'0"W

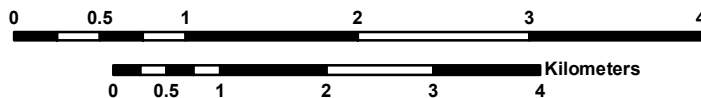
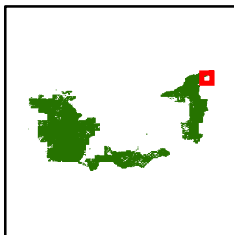
Hamaker Butte



Pumice Desert East

43°00'N 43°10'N 43°20'N 43°30'N 43°40'N 43°50'N 43°60'N 43°70'N

122°15'0"W 122°14'0"W 122°13'0"W 122°12'0"W 122°11'0"W 122°10'0"W 122°9'0"W 122°8'0"W 122°7'0"W



Note: This map is solely intended to depict relevant Threatened, Endangered, Proposed, Candidate, and Sensitive Species, along with streams and water bodies as a planning tool for decisions with regard to aerial fire retardant avoidance.

March 16, 2017