

TFR August 3, 2017



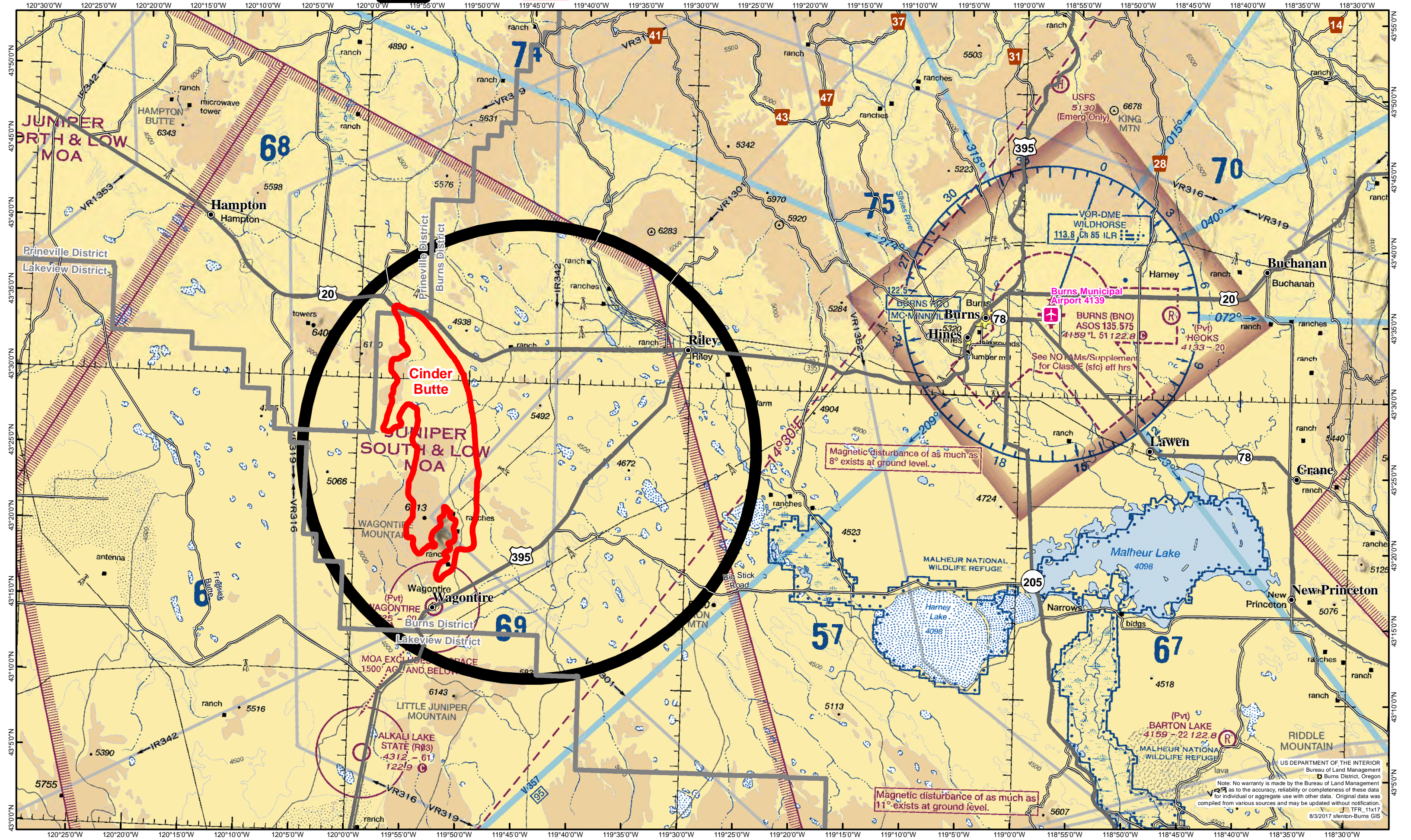
TFR 7_3753



Perimeter 8/3 10:00

Highways

Not All Roads Are Shown



Magnetic disturbance of as much as 8° exists at ground level.

Magnetic disturbance of as much as 11° exists at ground level.

US DEPARTMENT OF THE INTERIOR
Bureau of Land Management
Burns District, Oregon
Note: No warranty is made by the Bureau of Land Management as to the accuracy, reliability or completeness of these data for individual or aggregate use with other data. Original data was compiled from various sources and may be updated without notification.
TFR_11x17
8/3/2017 stenton-Burns GIS