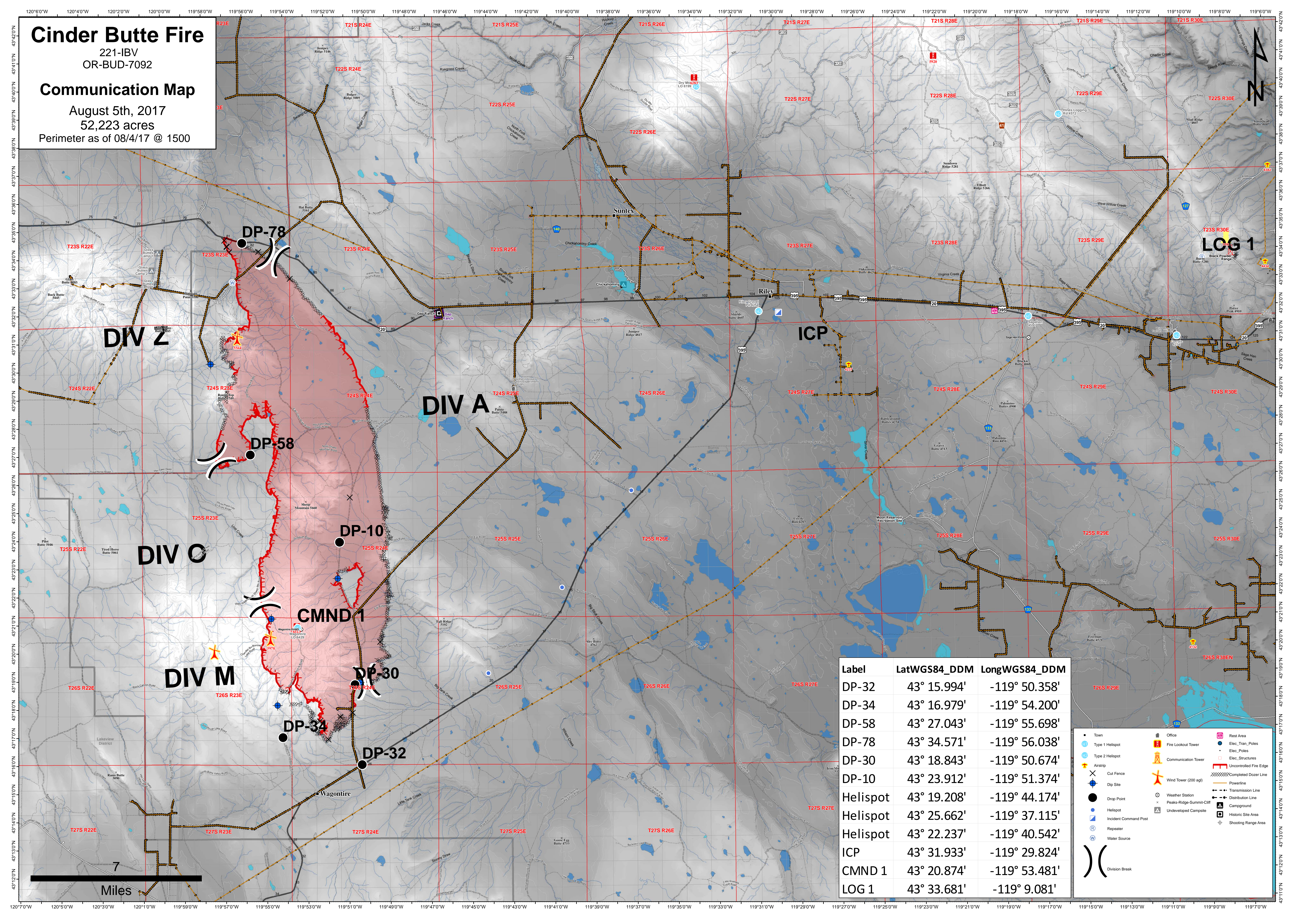


# Cinder Butte Fire

221-IBV  
OR-BUD-7092

## Communication Map

August 5th, 2017  
52,223 acres  
Perimeter as of 08/4/17 @ 1500



**DIV Z**

**DIV A**

**DIV O**

**DIV M**

**CMND 1**

**ICP**

**LOG 1**

**DP-78**

**DP-58**

**DP-10**

**DP-30**

**DP-34**

**DP-32**

Label	LatWGS84_DDM	LongWGS84_DDM
DP-32	43° 15.994'	-119° 50.358'
DP-34	43° 16.979'	-119° 54.200'
DP-58	43° 27.043'	-119° 55.698'
DP-78	43° 34.571'	-119° 56.038'
DP-30	43° 18.843'	-119° 50.674'
DP-10	43° 23.912'	-119° 51.374'
Helispot	43° 19.208'	-119° 44.174'
Helispot	43° 25.662'	-119° 37.115'
Helispot	43° 22.237'	-119° 40.542'
ICP	43° 31.933'	-119° 29.824'
CMND 1	43° 20.874'	-119° 53.481'
LOG 1	43° 33.681'	-119° 9.081'

- Town
- Type 1 Helispot
- Type 2 Helispot
- Airstrip
- Cut Fence
- Dip Site
- Drop Point
- Helispot
- Incident Command Post
- Repeater
- Water Source
- Office
- Fire Lockout Tower
- Communication Tower
- Wind Tower (200 agl)
- Weather Station
- Peaks-Ridge-Summit-Cliff
- Undeveloped Campsite
- Rest Area
- Elec\_Trans\_Poles
- Elec\_Poles
- Elec\_Structures
- Uncontrolled Fire Edge
- Completed Dozer Line
- Powerline
- Transmission Line
- Distribution Line
- Campground
- Historic Site Area
- Shooting Range Area
- Division Break

7 Miles