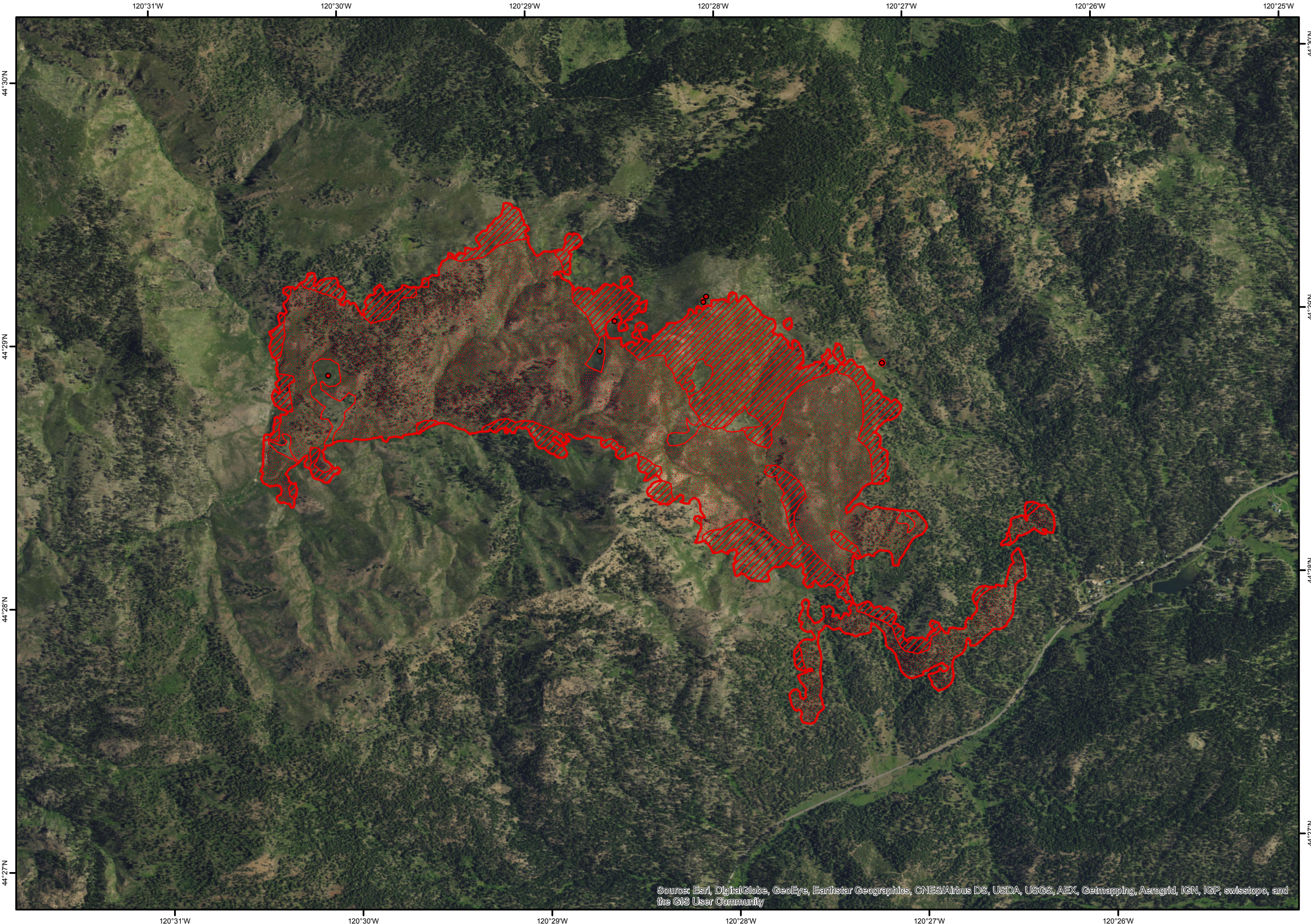


Desolation
OR-OCF-001135
Infrared Heat Sources
1:24,000

Heat Perimeter
Intense Heat Areas
Scattered Heat Areas
Isolated Heat Sources
NAD 1983 UTM Zone 10N



Source: Esri, DigitalGlobe, GeoEye, Earthstar Geographics, CNES/Airbus DS, USDA, USGS, AEX, Getmapping, Aerogrid, IGN, IGP, swisstopo, and the GIS User Community

IR Interpreter: Brian Monroe
IR interpreted acres: 1,568
Date: 09/14/2017
Scan Date/Time: 09/14/17 0253 hrs