

120°30'W

120°29'W

120°28'W

120°27'W

120°26'W

120°25'W





44°30'N

44°29'N

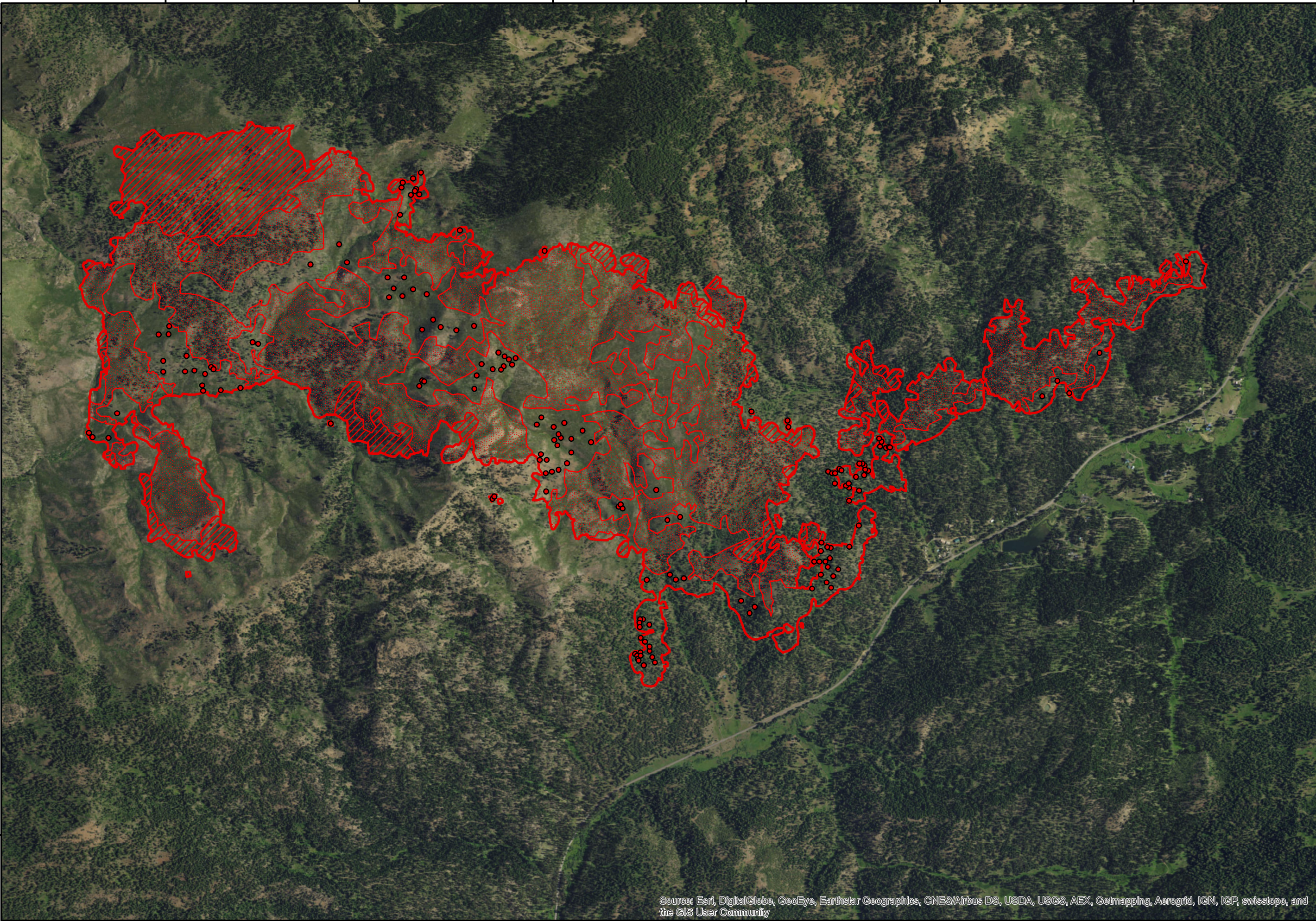
44°28'N

44°27'N

Desolation  
 OR-OCF-001135  
 Infrared Heat Sources  
 1:24,000

-  Heat Perimeter
-  Intense Heat Areas
-  Scattered Heat Areas
-  Isolated Heat Sources

NAD 1983 UTM Zone 10N



Source: Esri, DigitalGlobe, GeoEye, Earthstar Geographics, CNES/Airbus DS, USDA, USGS, AEX, Getmapping, Aerogrid, IGN, IGP, swisstopo, and the GIS User Community

IR Interpreter: Brian Monroe  
 IR interpreted acres: 2,475  
 Date: 09/16/2017  
 Scan Date/Time: 09/16/17 0049 hrs

120°30'W

120°29'W

120°28'W

120°27'W

120°26'W

120°25'W

44°29'N

44°28'N

44°27'N