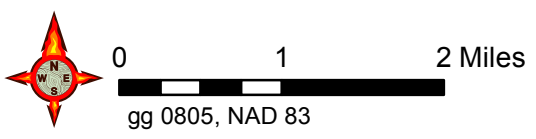


TFR 7/1160
MSL to 9000
Freq 126.025

Aviation Map 8/6/17
Devils Lake OR-FWF-462

- Division Break
- Lookout
- Dip Site
- Drop Point
- Helibase
- Helispot
- Incident Command Post
- Staging Area
- Water Source
- Uncontrolled Fire Edge
- Completed Line
- Completed Dozer Line
- Completed Hand Line
- INITIAL ATTACK



Helibase	42° 26.462'	-121° 9.315'
H-1	42° 19.094'	-120° 59.097'
H-2	42° 18.578'	-120° 57.428'
H-3	42° 18.627'	-120° 58.339'
H-4	42° 17.903'	-120° 57.617'
H-6	42° 17.974'	-120° 56.733'
H-8	42° 17.556'	-120° 57.189'
H-10	42° 17.503'	-120° 59.080'
H-12	42° 18.182'	-120° 59.278'
DP-5	42° 17.501'	-120° 59.006'
DP-11	42° 17.226'	-120° 58.868'
DP-13	42° 17.148'	-120° 58.510'

DP-15	42° 16.795'	-120° 58.343'
DP-20	42° 16.469'	-120° 57.973'
DP-45	42° 17.029'	-120° 57.207'
DP-60	42° 17.399'	-120° 57.290'
Dip Site	42° 18.893'	-120° 57.508'
Fishhole Staging	42° 17.978'	-120° 56.788'
Gerber Staging	42° 18.606'	-121° 1.256'
Pump Site	42° 18.246'	-120° 59.604'
Draft Site	42° 16.587'	-120° 56.061'
Draft Site	42° 17.282'	-120° 58.905'
ICP	42° 23.613'	-121° 2.693'