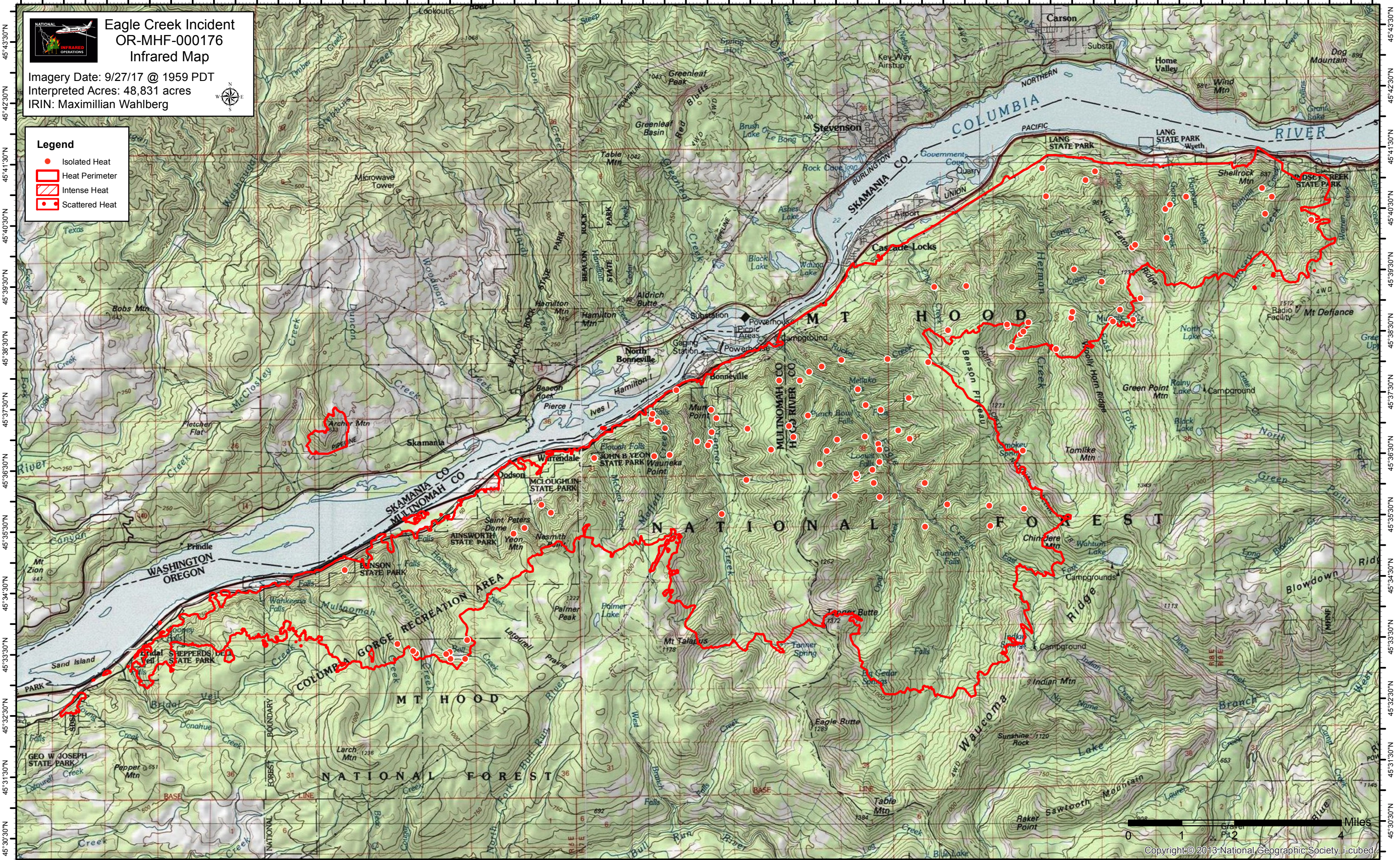


122°13'0"W 122°12'0"W 122°11'0"W 122°10'0"W 122°9'0"W 122°8'0"W 122°7'0"W 122°6'0"W 122°5'0"W 122°4'0"W 122°3'0"W 122°2'0"W 122°1'0"W 122°0'0"W 121°59'0"W 121°58'0"W 121°57'0"W 121°56'0"W 121°55'0"W 121°54'0"W 121°53'0"W 121°52'0"W 121°51'0"W 121°50'0"W 121°49'0"W 121°48'0"W 121°47'0"W 121°46'0"W 121°45'0"W 121°44'0"W 121°43'0"W 121°42'0"W 121°41'0"W



Eagle Creek Incident OR-MHF-000176 Infrared Map

Imagery Date: 9/27/17 @ 1959 PDT
Interpreted Acres: 48,831 acres
IRIN: Maximillian Wahlberg

Legend

- Isolated Heat
- Heat Perimeter
- Intense Heat
- Scattered Heat



122°13'0"W 122°12'0"W 122°11'0"W 122°10'0"W 122°9'0"W 122°8'0"W 122°7'0"W 122°6'0"W 122°5'0"W 122°4'0"W 122°3'0"W 122°2'0"W 122°1'0"W 122°0'0"W 121°59'0"W 121°58'0"W 121°57'0"W 121°56'0"W 121°55'0"W 121°54'0"W 121°53'0"W 121°52'0"W 121°51'0"W 121°50'0"W 121°49'0"W 121°48'0"W 121°47'0"W 121°46'0"W 121°45'0"W 121°44'0"W 121°43'0"W 121°42'0"W

Miles
0 1 2 3 4

Copyright © 2013 National Geographic Society, i-cubed