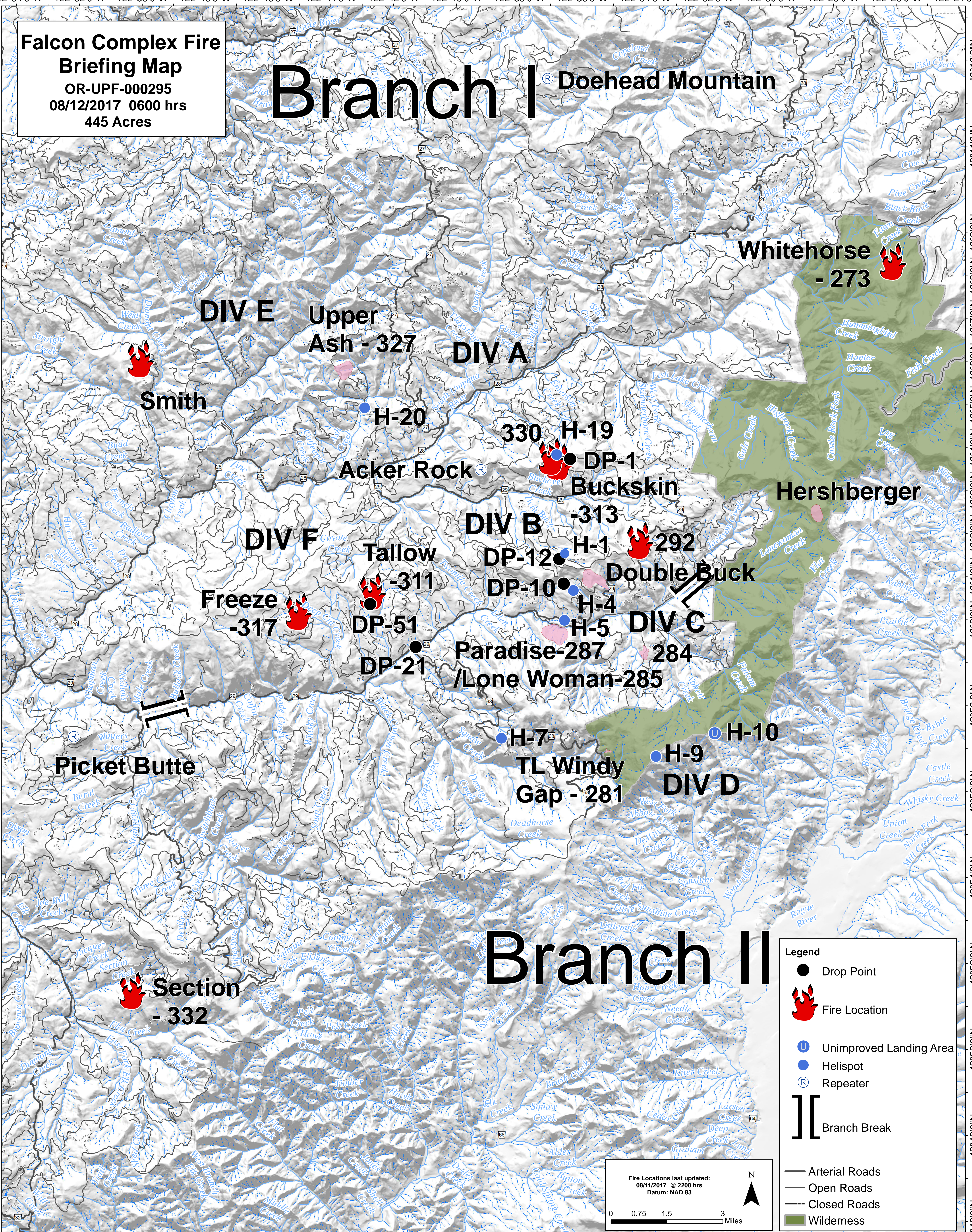


Falcon Complex Fire
Briefing Map
OR-UPF-000295
08/12/2017 0600 hrs
445 Acres

Branch I Doehead Mountain



Whitehorse
- 273

DIV E
Upper Ash - 327

DIV A

Smith

H-20

330 H-19

Acker Rock
DP-1
Buckskin

Hershberger

DIV F

DIV B

Tallow -311

DP-12 H-1 -292

Double Buck

Freeze -317

DP-51

DP-10 H-4

DIV C

DP-21

Paradise-287

/Lone Woman-285

Picket Butte

H-7
TL Windy Gap -281

H-10

H-9
DIV D

Section
- 332

Branch II

Legend

- Drop Point
- 🔥 Fire Location
- U Unimproved Landing Area
- Helispot
- Ⓡ Repeater
-]] Branch Break
- Arterial Roads
- Open Roads
- Closed Roads
- Wilderness

Fire Locations last updated:
08/11/2017 @ 2200 hrs
Datum: NAD 83