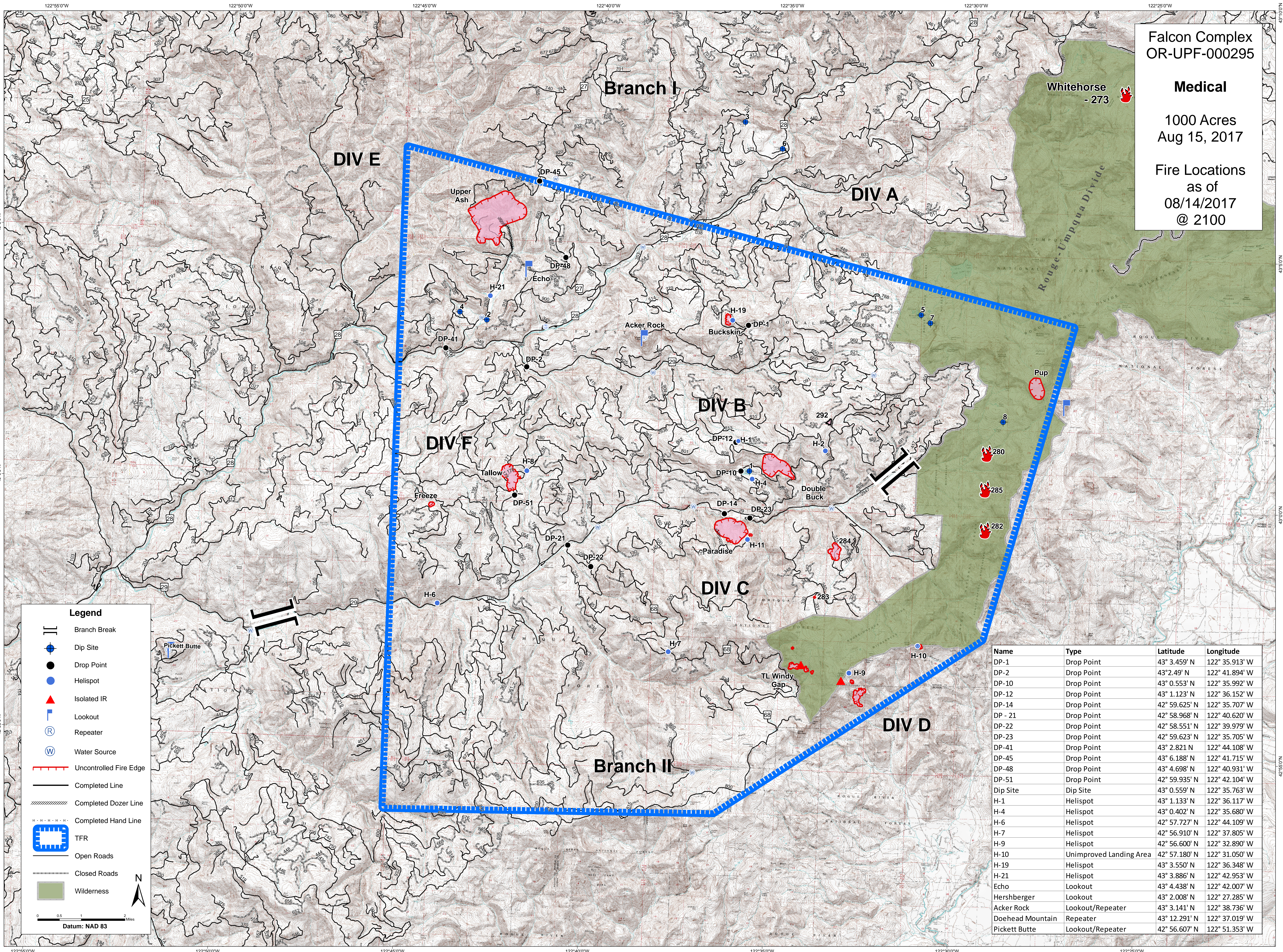


**Falcon Complex
OR-UPF-000295**

Medical

1000 Acres
Aug 15, 2017

Fire Locations
as of
08/14/2017
@ 2100



Legend

- Branch Break
- Dip Site
- Drop Point
- Helispot
- Isolated IR
- Lookout
- Repeater
- Water Source
- Uncontrolled Fire Edge
- Completed Line
- Completed Dozer Line
- Completed Hand Line
- TFR
- Open Roads
- Closed Roads
- Wilderness

Datum: NAD 83

Name	Type	Latitude	Longitude
DP-1	Drop Point	43° 3.459' N	122° 35.913' W
DP-2	Drop Point	43° 2.49' N	122° 41.894' W
DP-10	Drop Point	43° 0.553' N	122° 35.992' W
DP-12	Drop Point	43° 1.123' N	122° 36.152' W
DP-14	Drop Point	42° 58.625' N	122° 35.707' W
DP-21	Drop Point	42° 58.968' N	122° 40.620' W
DP-22	Drop Point	42° 58.551' N	122° 39.979' W
DP-23	Drop Point	42° 59.623' N	122° 35.705' W
DP-41	Drop Point	43° 2.821' N	122° 44.108' W
DP-45	Drop Point	43° 6.188' N	122° 41.715' W
DP-48	Drop Point	43° 4.698' N	122° 40.931' W
DP-51	Drop Point	42° 59.935' N	122° 42.104' W
Dip Site	Dip Site	43° 0.559' N	122° 35.763' W
H-1	Helispot	43° 1.133' N	122° 36.117' W
H-4	Helispot	43° 0.402' N	122° 35.680' W
H-6	Helispot	42° 57.727' N	122° 44.109' W
H-7	Helispot	42° 56.910' N	122° 37.805' W
H-9	Helispot	42° 56.600' N	122° 32.890' W
H-10	Unimproved Landing Area	42° 57.180' N	122° 31.050' W
H-19	Helispot	43° 3.550' N	122° 36.348' W
H-21	Helispot	43° 3.886' N	122° 42.953' W
Echo	Lookout	43° 4.438' N	122° 42.007' W
Hershberger	Lookout	43° 2.008' N	122° 27.285' W
Acker Rock	Lookout/Repeater	43° 3.141' N	122° 38.736' W
Doehead Mountain	Repeater	43° 12.291' N	122° 37.019' W
Pickett Butte	Lookout/Repeater	42° 56.607' N	122° 51.353' W