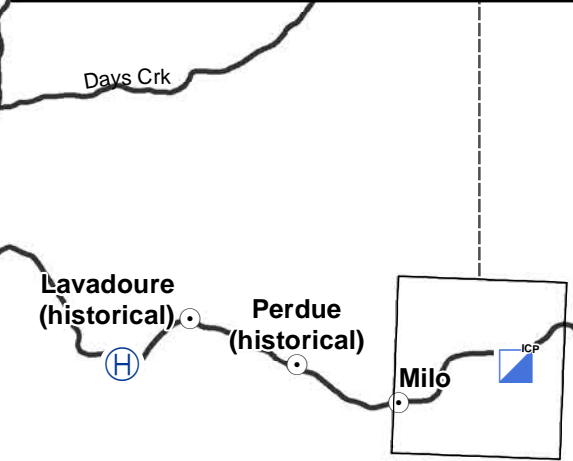
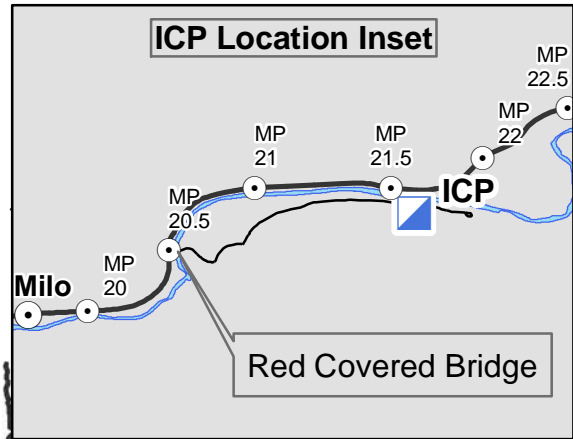


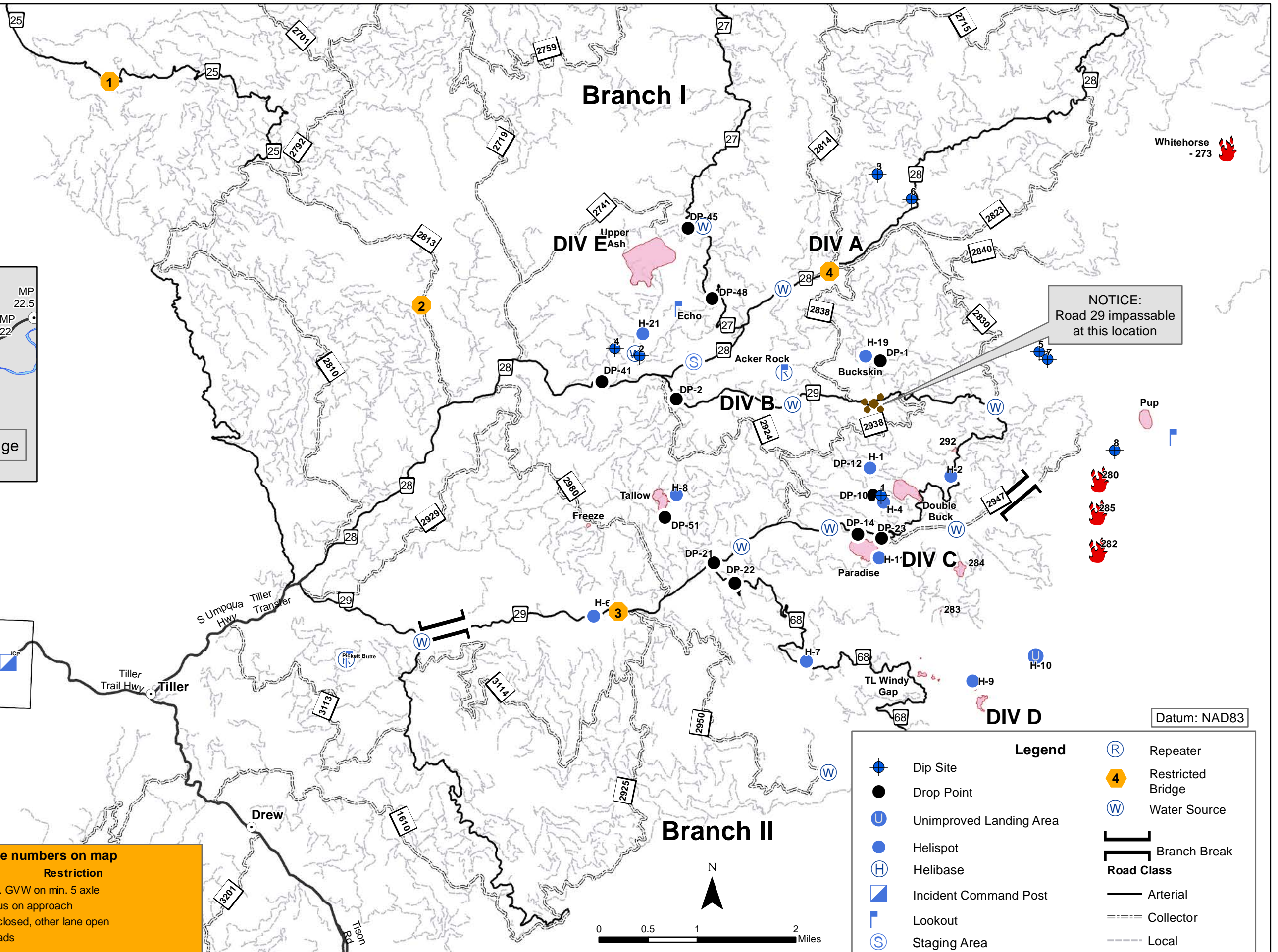
Falcon Complex Fire
OR-UPF-000295
1000 Acres

Transportation Map
08/15/2017

Fire Locations as of
08/14/2017
@ 2100



Bridge Number	Bridge	Restriction
1	Cavitt Creek	100K max. GVW on min. 5 axle
2	Straight Creek	Small radius on approach
3	Deep Cut	One lane closed, other lane open
4	Emerson	No overloads



NOTICE:
Road 29 impassable
at this location

Whitehorse
- 273

Datum: NAD83

Legend

- Dip Site
- Drop Point
- Unimproved Landing Area
- Helispot
- Helibase
- Incident Command Post
- Lookout
- Staging Area
- Repeater
- Restricted Bridge
- Water Source
- Branch Break
- Road Class
 - Arterial
 - Collector
 - Local