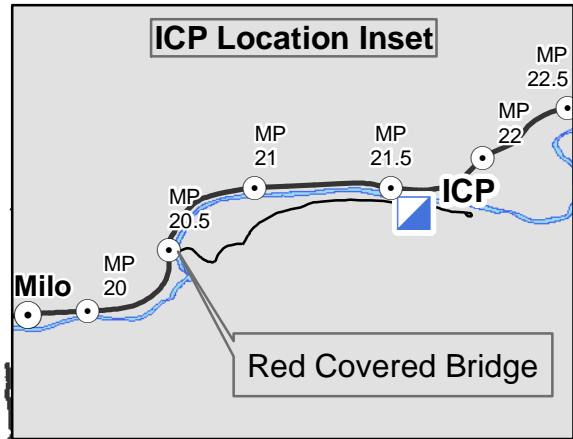


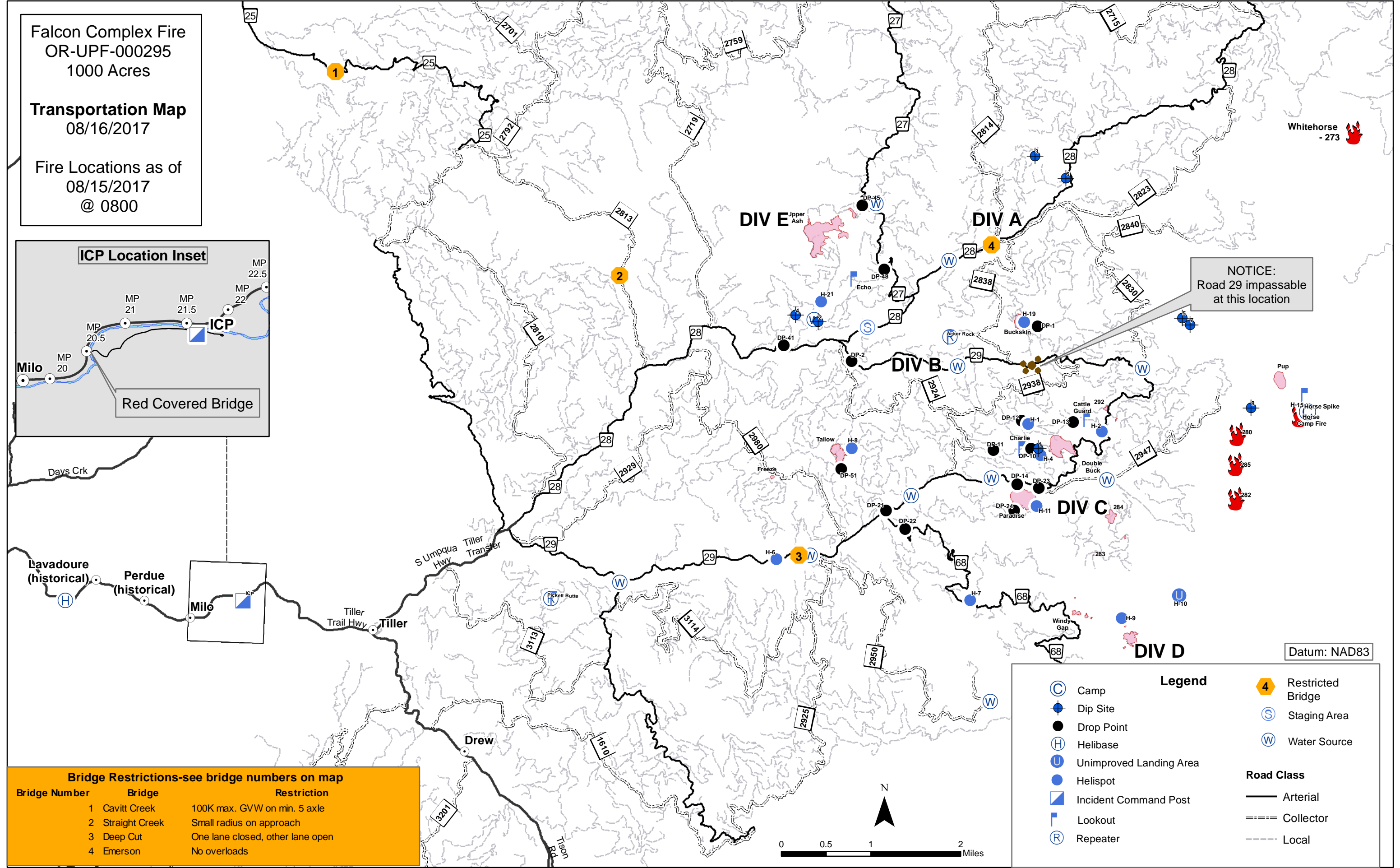
Falcon Complex Fire  
OR-UPF-000295  
1000 Acres

Transportation Map  
08/16/2017

Fire Locations as of  
08/15/2017  
@ 0800



NOTICE:  
Road 29 impassable  
at this location



**Bridge Restrictions-see bridge numbers on map**

Bridge Number	Bridge	Restriction
1	Cavitt Creek	100K max. GVW on min. 5 axle
2	Straight Creek	Small radius on approach
3	Deep Cut	One lane closed, other lane open
4	Emerson	No overloads

**Legend**

- (C) Camp
- (D) Dip Site
- (DP) Drop Point
- (H) Helibase
- (U) Unimproved Landing Area
- (H) Helispot
- (ICP) Incident Command Post
- (L) Lookout
- (R) Repeater
- (4) Restricted Bridge
- (S) Staging Area
- (W) Water Source

**Road Class**

- Arterial
- - - Collector
- ... Local

