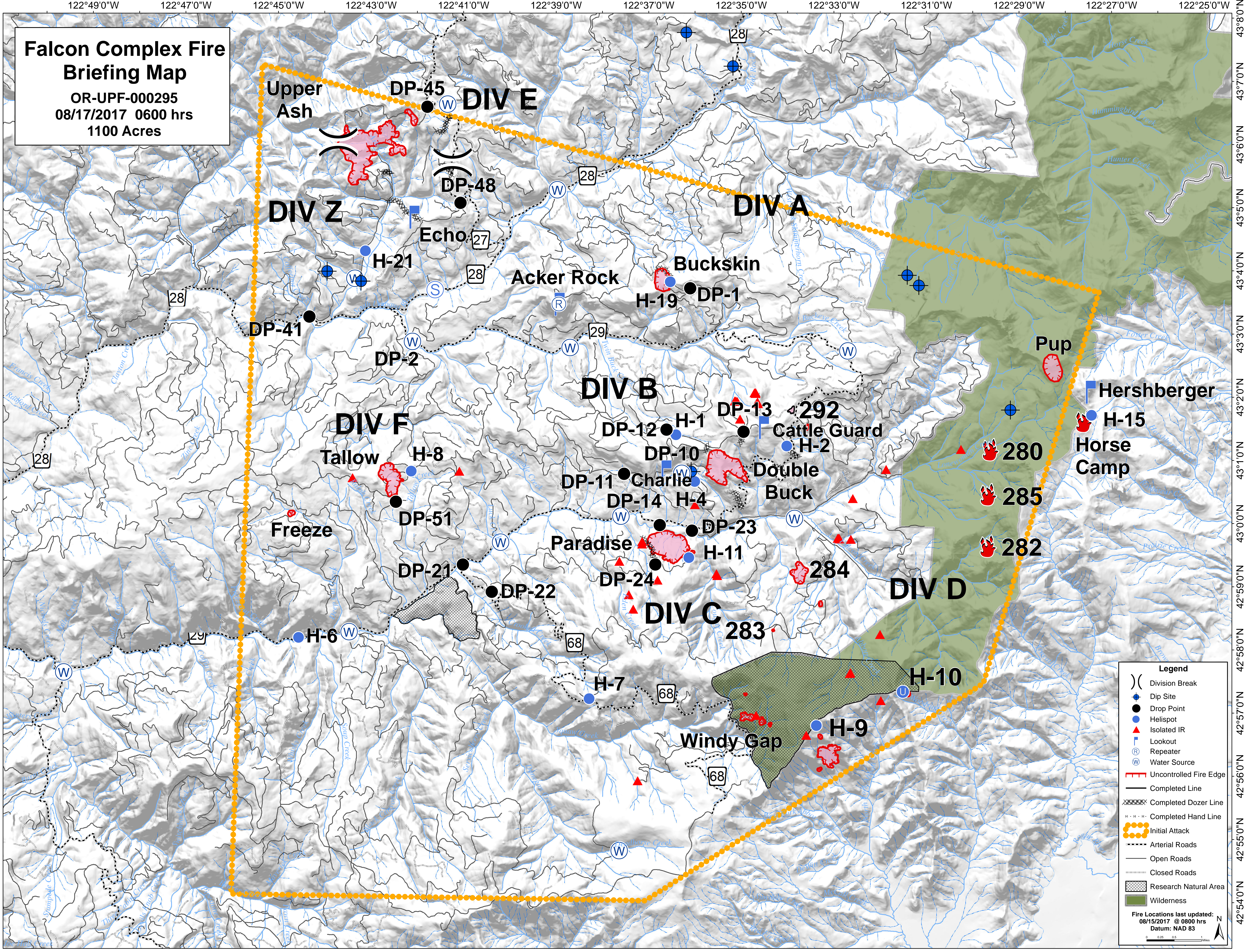


**Falcon Complex Fire
Briefing Map**
 OR-UPF-000295
 08/17/2017 0600 hrs
 1100 Acres



Legend

- () Division Break
- Dip Site
- Drop Point
- Helispot
- ▲ Isolated IR
- Ⓡ Lookout
- Ⓡ Repeater
- Ⓢ Water Source
- ▬ Uncontrolled Fire Edge
- ▬ Completed Line
- ▬ Completed Dozer Line
- ▬ Completed Hand Line
- Initial Attack
- ▬ Arterial Roads
- ▬ Open Roads
- ▬ Closed Roads
- ▨ Research Natural Area
- Wilderness

Fire Locations last updated:
 08/15/2017 @ 0800 hrs
 Datum: NAD 83

122°49'0"W 122°47'0"W 122°45'0"W 122°43'0"W 122°41'0"W 122°39'0"W 122°37'0"W 122°35'0"W 122°33'0"W 122°31'0"W 122°29'0"W 122°27'0"W 122°25'0"W

43°80'N
43°70'N
43°60'N
43°50'N
43°40'N
43°30'N
43°20'N
43°10'N
43°00'N
42°59'N
42°58'N
42°57'N
42°56'N
42°55'N
42°54'N