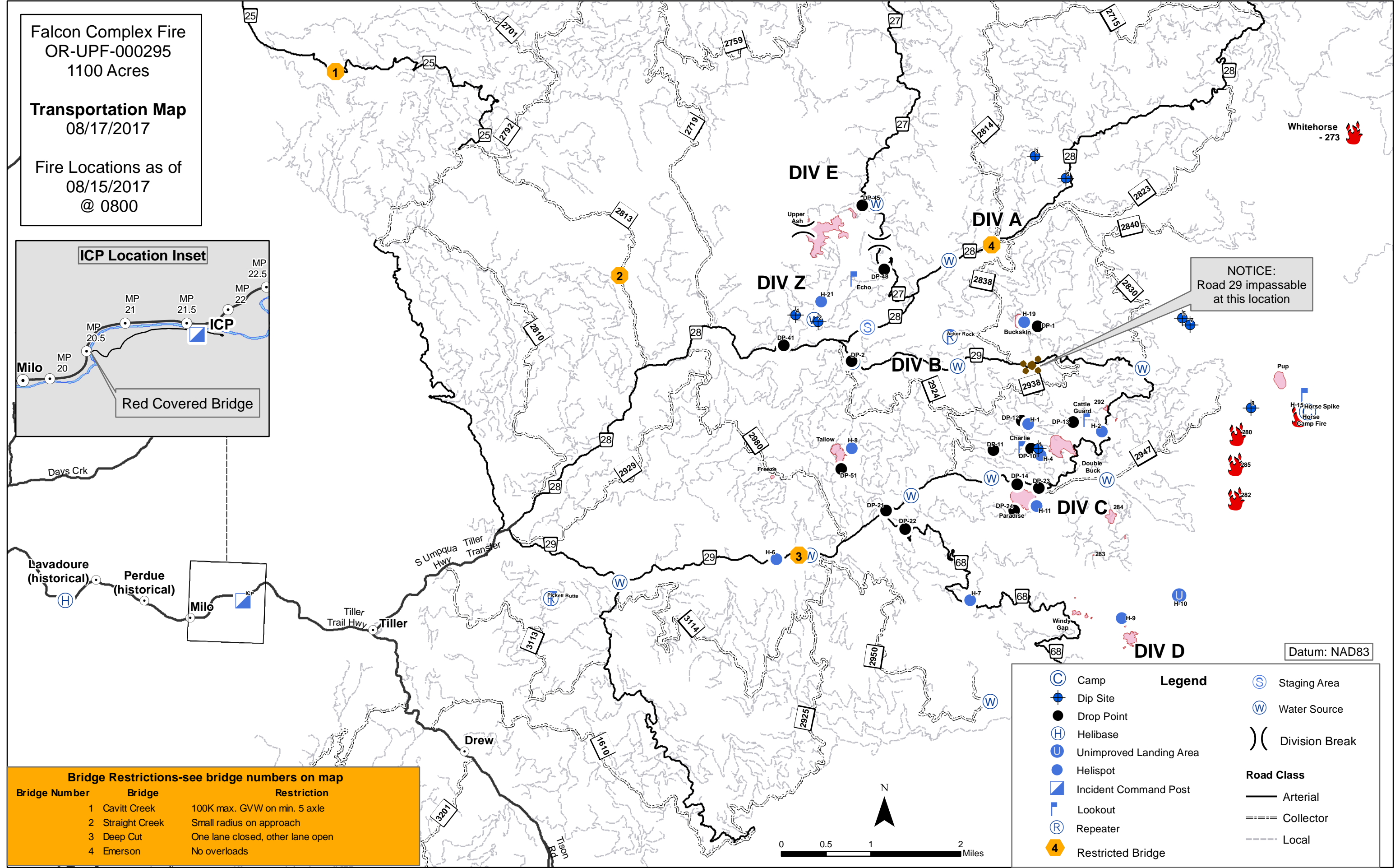
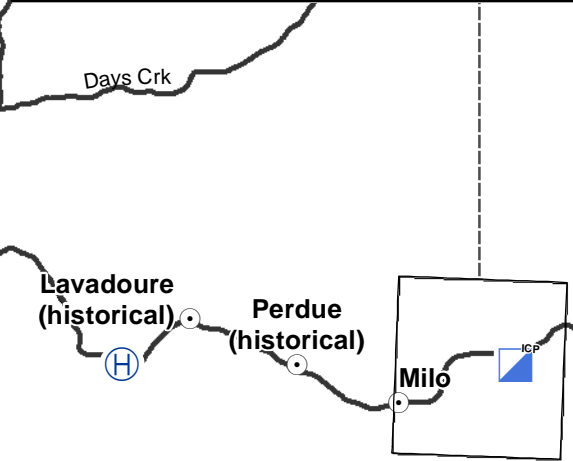
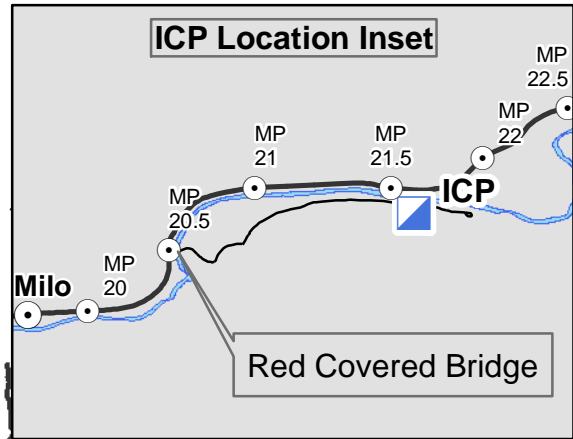


Falcon Complex Fire
OR-UPF-000295
1100 Acres

Transportation Map
08/17/2017

Fire Locations as of
08/15/2017
@ 0800



NOTICE:
Road 29 impassable
at this location

Whitehorse
- 273

Pup
H-15 Horse Spike
Camp Fire

Datum: NAD83

Bridge Restrictions-see bridge numbers on map		
Bridge Number	Bridge	Restriction
1	Cavitt Creek	100K max. GVW on min. 5 axle
2	Straight Creek	Small radius on approach
3	Deep Cut	One lane closed, other lane open
4	Emerson	No overloads

Legend

- Camp
- Dip Site
- Drop Point
- Helibase
- Unimproved Landing Area
- Helispot
- Incident Command Post
- Lookout
- Repeater
- Restricted Bridge
- Staging Area
- Water Source
- Division Break

Road Class

- Arterial
- Collector
- Local