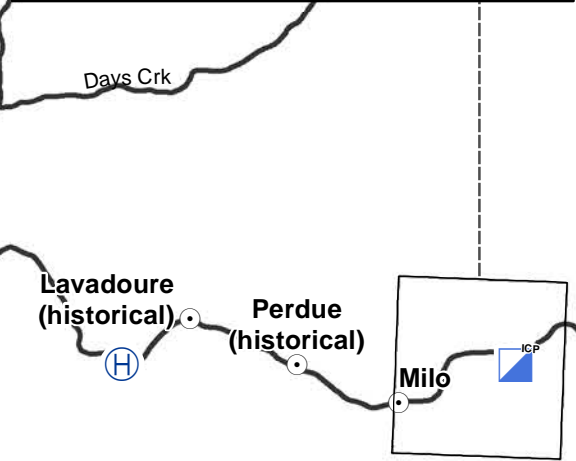
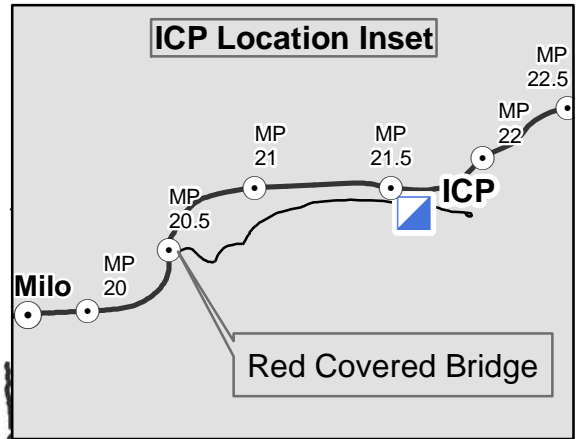


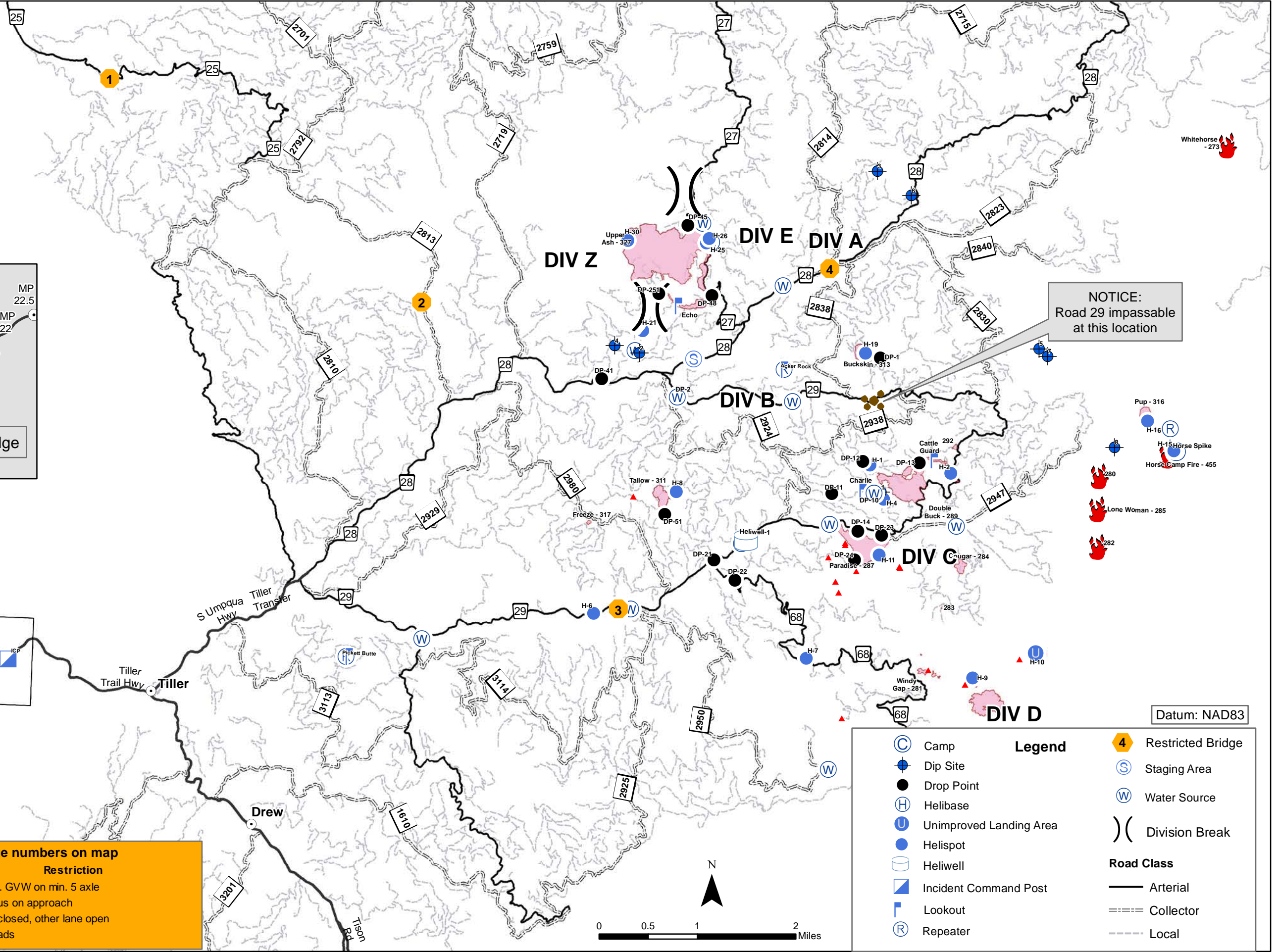
Falcon Complex Fire
OR-UPF-000295
2500 Acres

Transportation Map
08/21/2017

Fire Locations as of
08/20/2017
@ 2000



Bridge Number	Bridge	Restriction
1	Cavitt Creek	100K max. GVW on min. 5 axle
2	Straight Creek	Small radius on approach
3	Deep Cut	One lane closed, other lane open
4	Emerson	No overloads



NOTICE:
Road 29 impassable
at this location

Datum: NAD83

	Camp		Restricted Bridge
	Dip Site		Staging Area
	Drop Point		Water Source
	Helibase		Division Break
	Unimproved Landing Area		Road Class
	Helispot		Arterial
	Heliwell		Collector
	Incident Command Post		Local
	Lookout		
	Repeater		