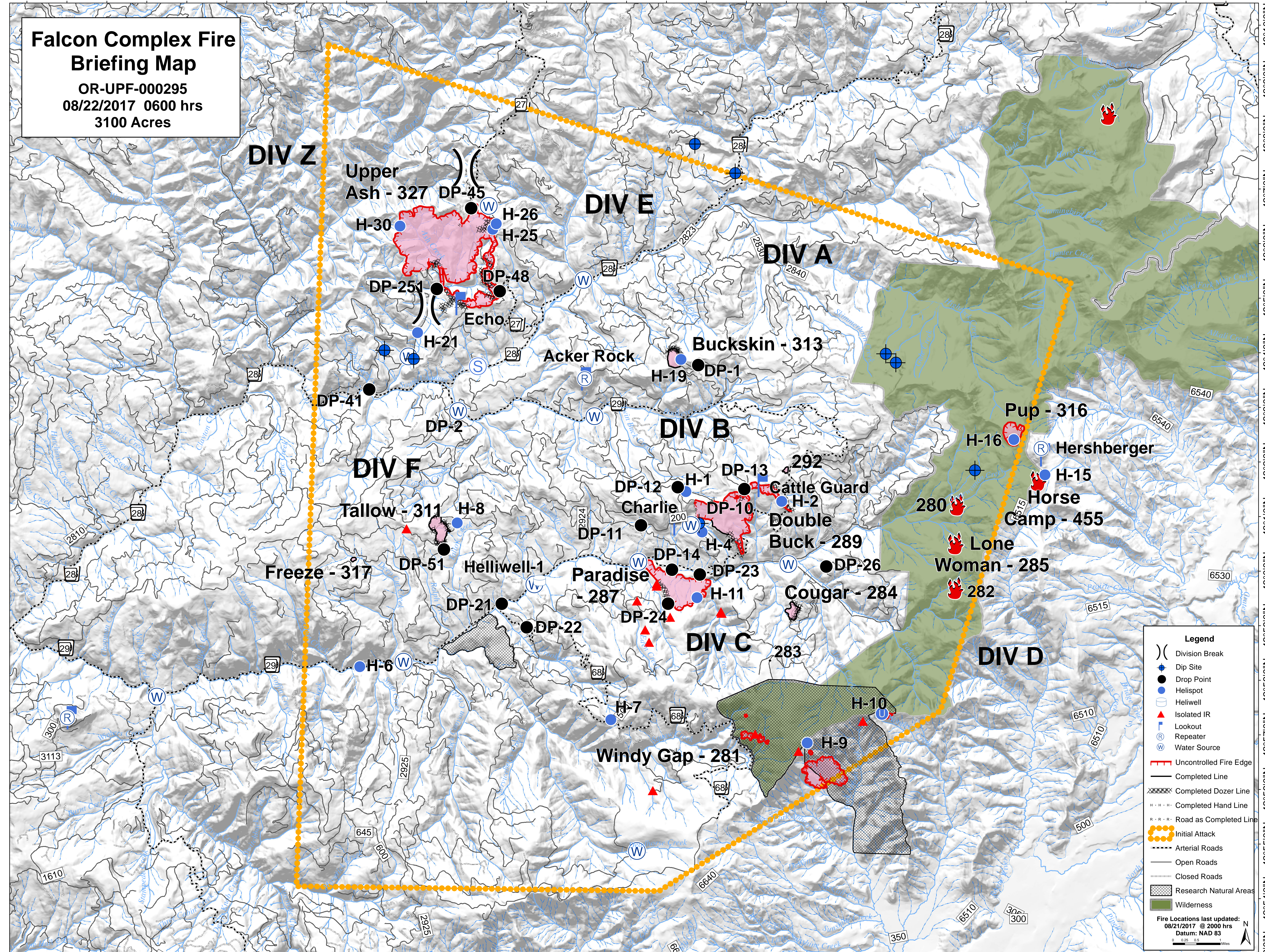


**Falcon Complex Fire Briefing Map**  
OR-UPF-000295  
08/22/2017 0600 hrs  
3100 Acres



**DIV Z**

**DIV E**

**DIV A**

**DIV B**

**DIV F**

**DIV C**

**DIV D**

Upper Ash - 327  
H-30  
DP-45  
H-26  
H-25  
DP-251  
DP-48  
Echo  
H-21

Acker Rock  
Buckskin - 313  
H-19  
DP-1

Tallow - 311  
H-8  
DP-11  
DP-12  
H-1  
DP-13  
Cattle Guard  
DP-10  
H-2  
Double Buck - 289  
DP-14  
H-4  
DP-23  
Paradise - 287  
H-11  
DP-24  
Cougar - 284  
DP-26  
DP-22  
DP-21  
Helliwell-1

Pup - 316  
H-16  
Hershberger  
H-15  
Horse Camp - 455  
Lone Woman - 285  
282  
280

Windy Gap - 281  
H-7  
H-9  
H-10

Freeze - 317  
H-6

**Legend**

- ( ) Division Break
- Dip Site
- Drop Point
- Helispot
- Heliwell
- ▲ Isolated IR
- ⚡ Lookout
- Ⓡ Repeater
- Ⓜ Water Source
- ▬ Uncontrolled Fire Edge
- ▬ Completed Line
- ▬ Completed Dozer Line
- ▬ Completed Hand Line
- ▬ Road as Completed Line
- Initial Attack
- ▬ Arterial Roads
- ▬ Open Roads
- ▬ Closed Roads
- ▨ Research Natural Areas
- ▬ Wilderness

Fire Locations last updated:  
08/21/2017 @ 2000 hrs  
Datum: NAD 83