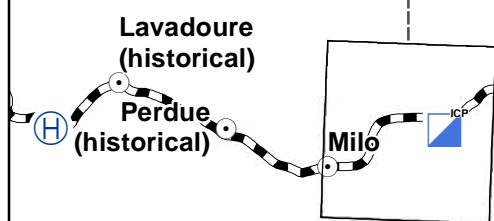
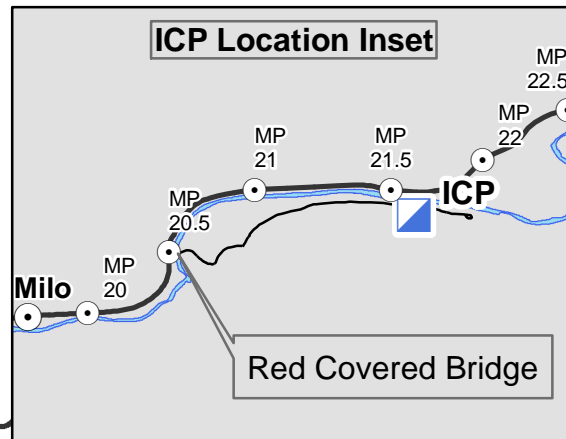


Falcon Complex Fire
OR-UPF-000295
3300 Acres

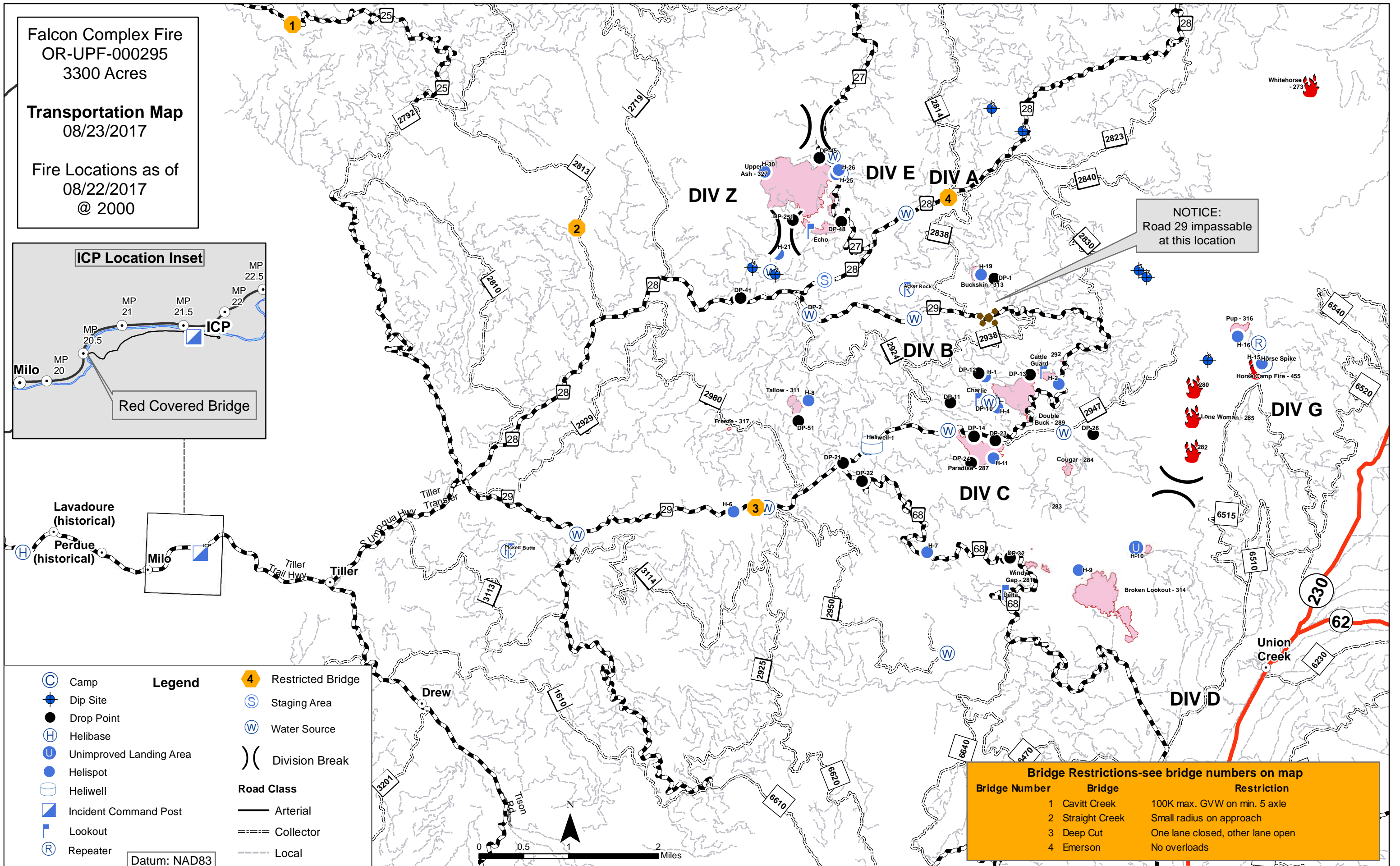
Transportation Map
08/23/2017

Fire Locations as of
08/22/2017
@ 2000



- Legend**
- Ⓢ Camp
 - Ⓡ Dip Site
 - Drop Point
 - Ⓜ Helibase
 - Ⓡ Unimproved Landing Area
 - Helispot
 - Ⓜ Heliwell
 - ▢ Incident Command Post
 - ▢ Lookout
 - Ⓡ Repeater
 - Ⓢ Restricted Bridge
 - Ⓢ Staging Area
 - Ⓢ Water Source
 -)) Division Break
- Road Class**
- Arterial
 - ==== Collector
 - Local

Datum: NAD83



NOTICE:
Road 29 impassable
at this location

Bridge Restrictions-see bridge numbers on map

Bridge Number	Bridge	Restriction
1	Cavitt Creek	100K max. GVW on min. 5 axle
2	Straight Creek	Small radius on approach
3	Deep Cut	One lane closed, other lane open
4	Emerson	No overloads