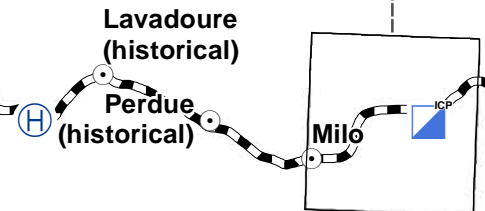
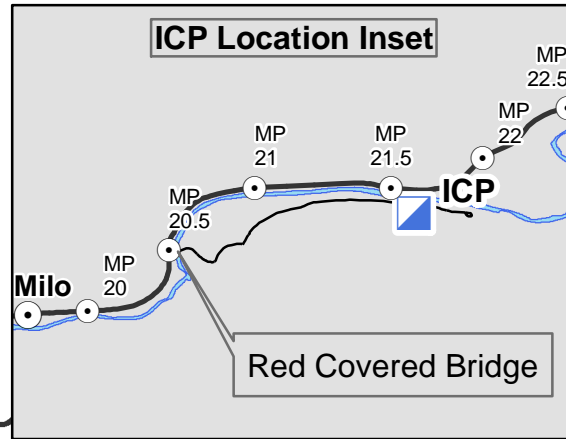


Falcon Complex Fire
OR-UPF-000295
3350 Acres

Transportation Map
08/24/2017

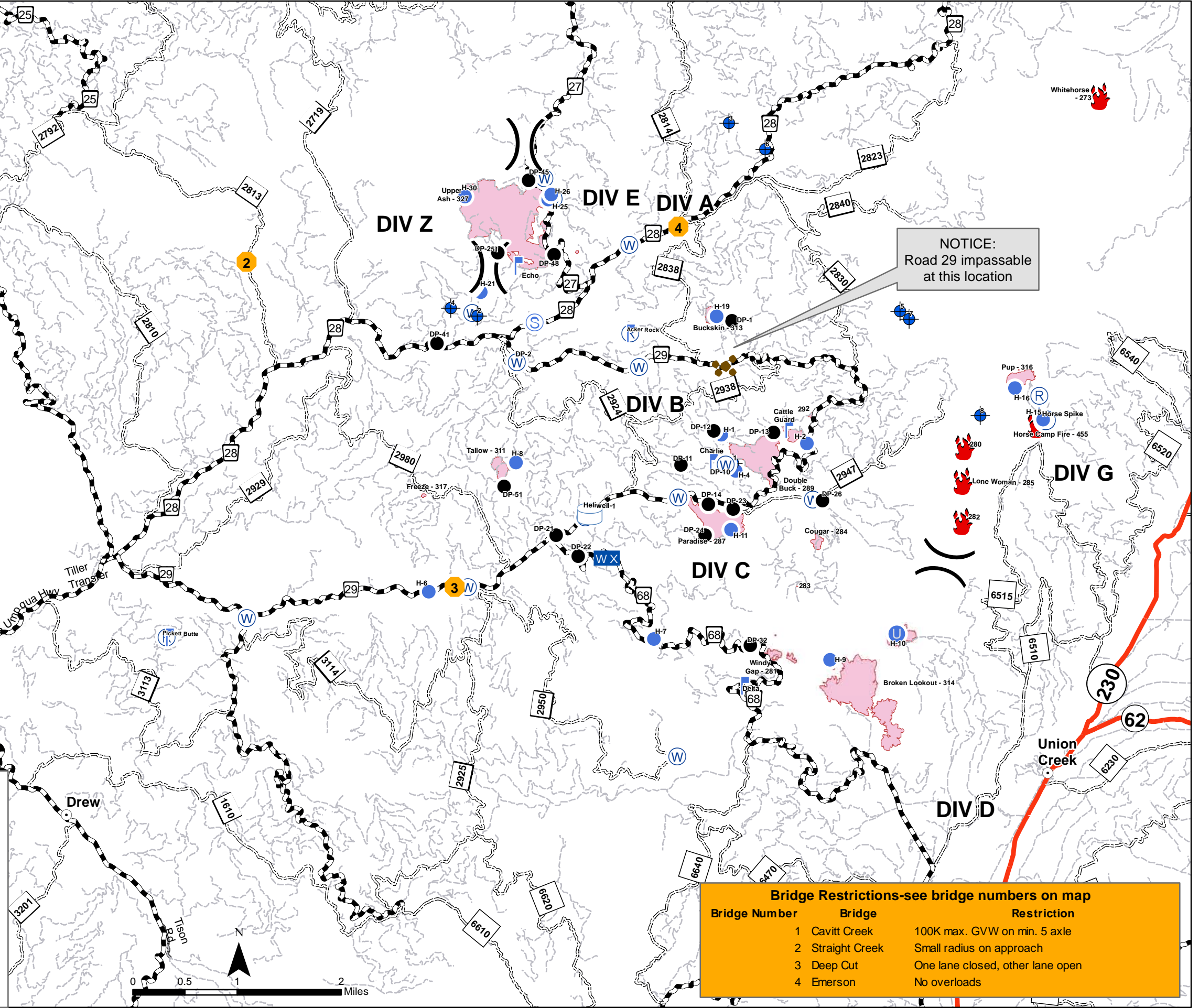
Fire Locations as of
08/23/2017
@ 2200



Legend

- C Camp
- + Dip Site
- Drop Point
- H Helibase
- U Unimproved Landing Area
- Helispot
- H Heliwell
- Incident Command Post
- L Lookout
- R Repeater
- 4 Restricted Bridge
- S Staging Area
- W Water Source
-) Division Break
- Road Class**
- Arterial
- Collector
- Local

Datum: NAD83



NOTICE:
Road 29 impassable
at this location

Bridge Restrictions-see bridge numbers on map		
Bridge Number	Bridge	Restriction
1	Cavitt Creek	100K max. GVW on min. 5 axle
2	Straight Creek	Small radius on approach
3	Deep Cut	One lane closed, other lane open
4	Emerson	No overloads