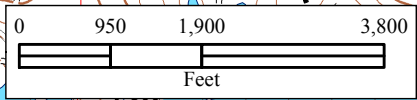
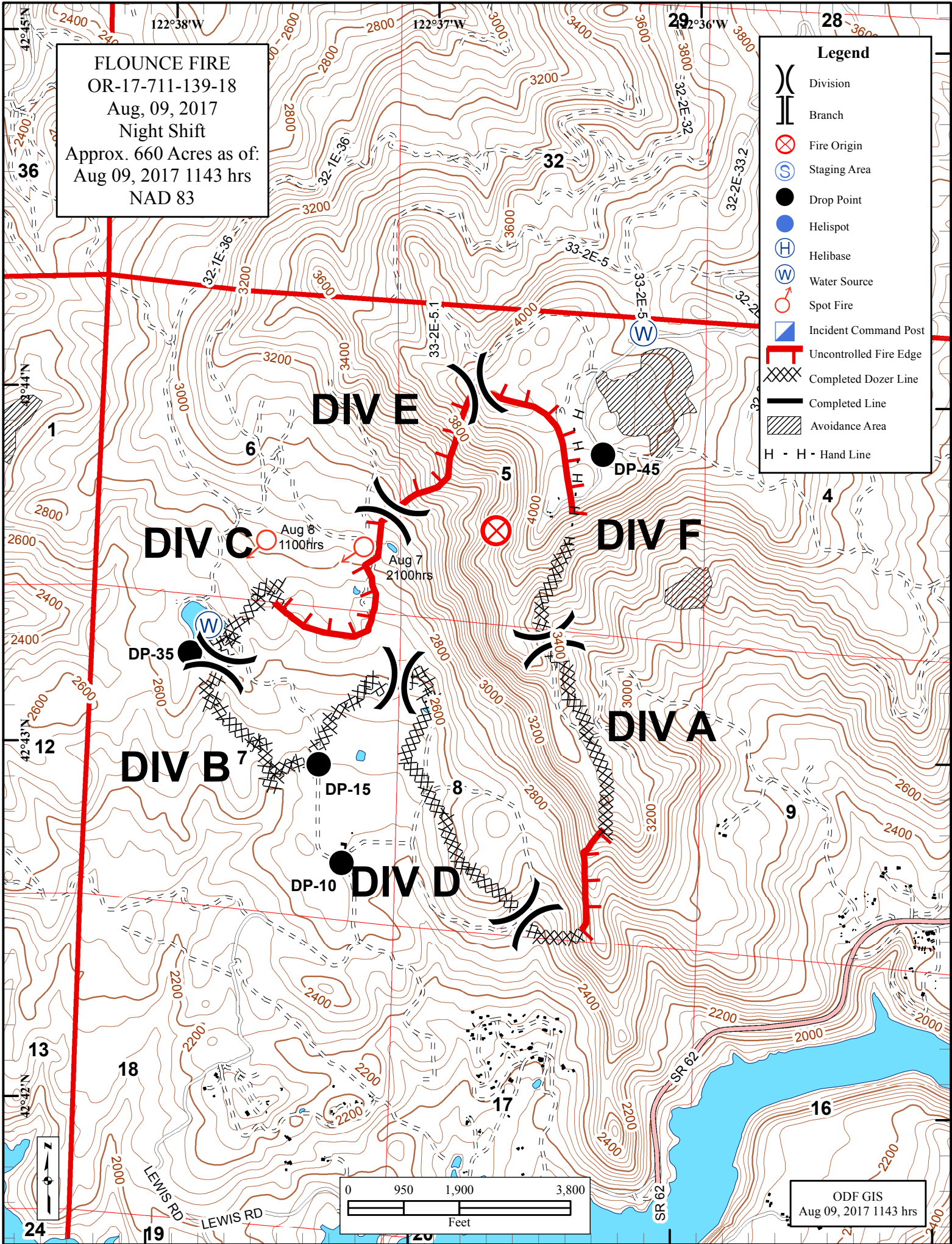


FLOUNCE FIRE
 OR-17-711-139-18
 Aug, 09, 2017
 Night Shift
 Approx. 660 Acres as of:
 Aug 09, 2017 1143 hrs
 NAD 83

Legend

- (X) Division
- || Branch
- ⊗ Fire Origin
- (S) Staging Area
- Drop Point
- Helispot
- (H) Helibase
- (W) Water Source
- ♂ Spot Fire
- ▢ Incident Command Post
- ┌ Uncontrolled Fire Edge
- ▨ Completed Dozer Line
- Completed Line
- ▨ Avoidance Area
- H - H - Hand Line



ODF GIS
 Aug 09, 2017 1143 hrs