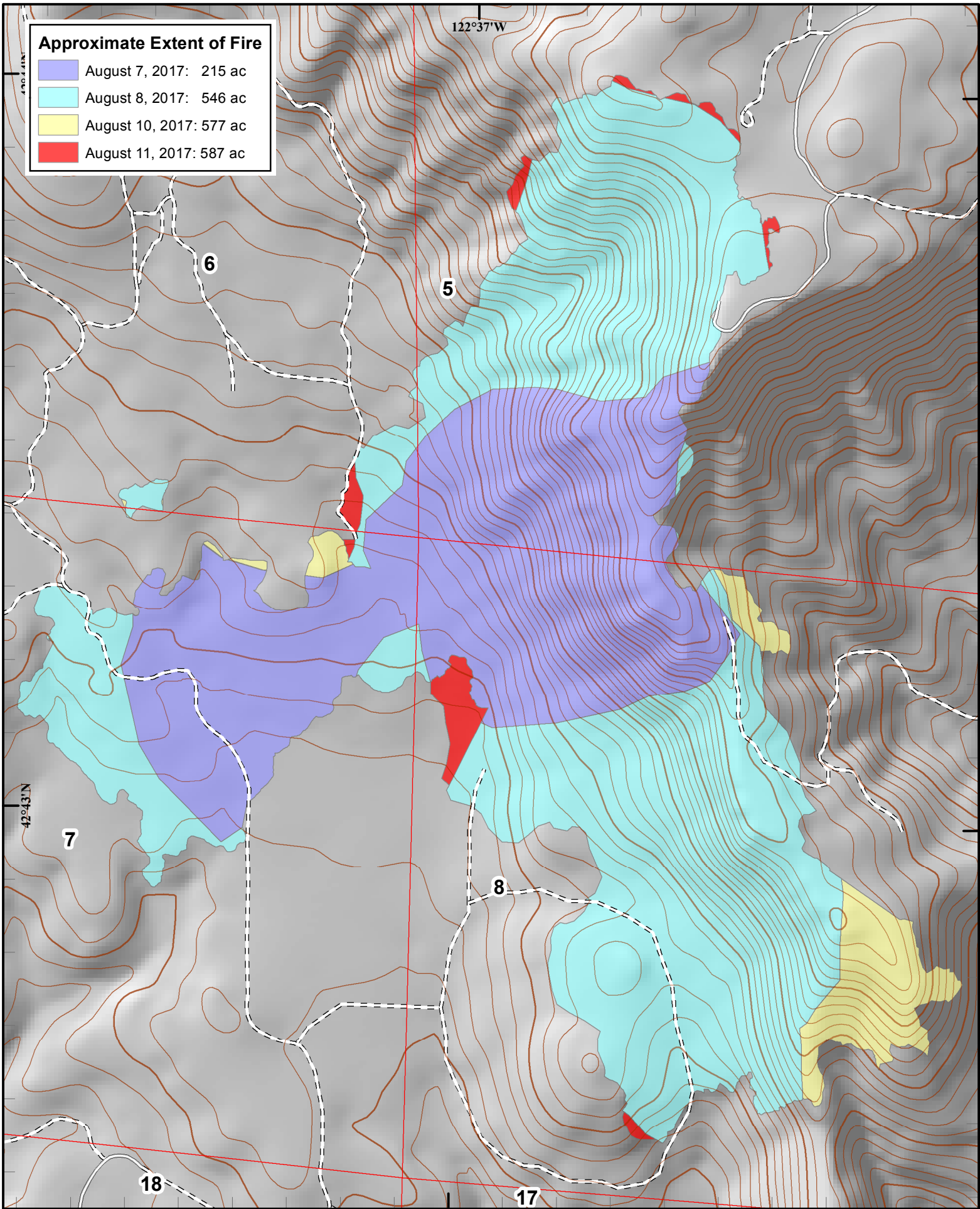


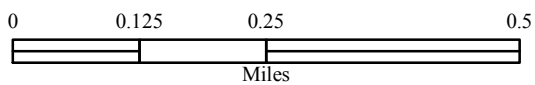
Approximate Extent of Fire

- August 7, 2017: 215 ac
- August 8, 2017: 546 ac
- August 10, 2017: 577 ac
- August 11, 2017: 587 ac



**Progression Map
Flounce Fire
OR-17-711-139-18**

Approx. 587 Acres
NAD 83



ODF GIS, Team 1
Aug 14, 2017 1555 hrs