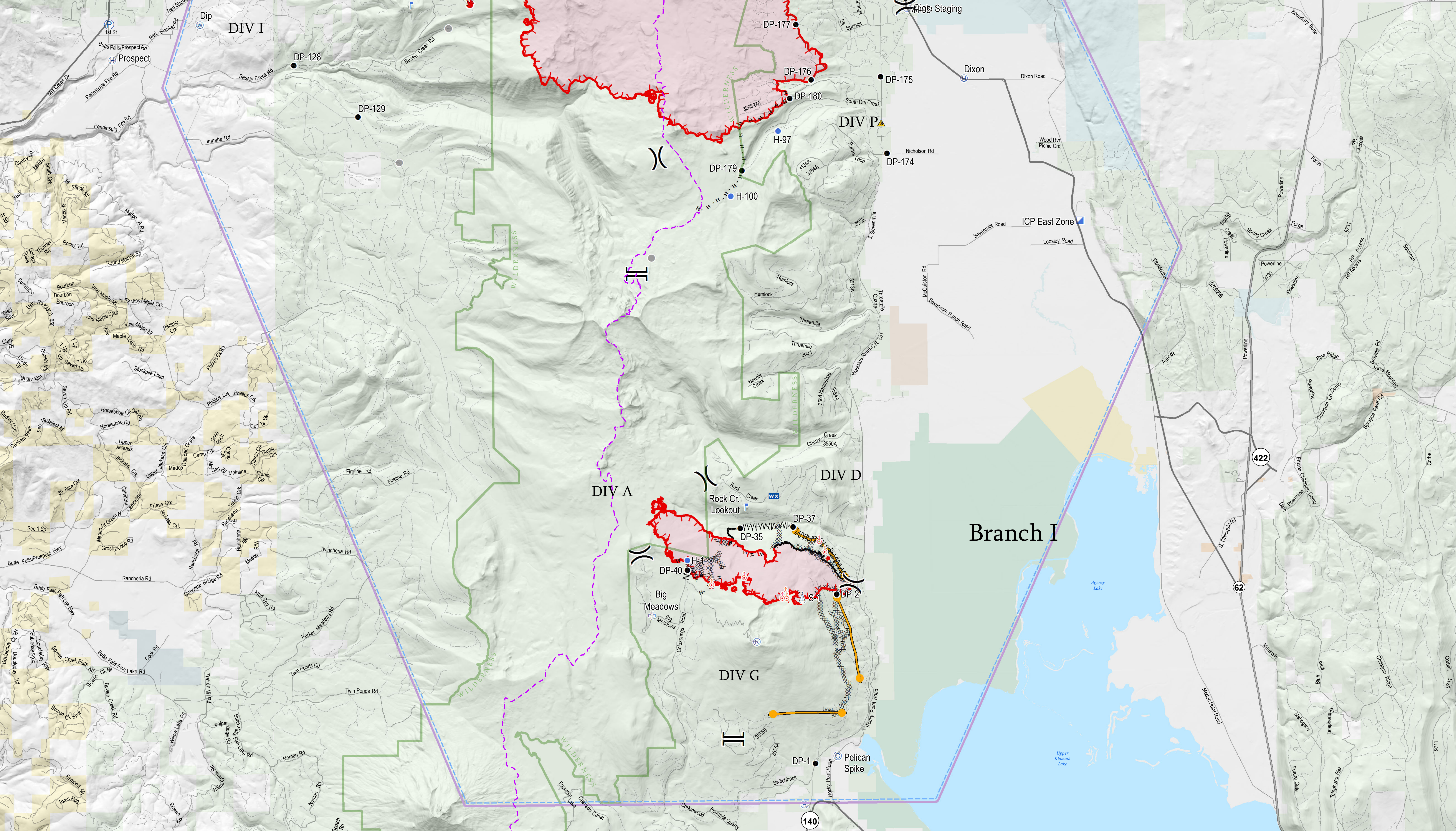


Point Type	Label	Latitude	Longitude
Camp	Diamond Spike	43° 7.803	-122° 8.900
Camp	Pelican Spike	42° 28.040	-122° 6.117
Camp	Red Cone	42° 29.660	-122° 3.193
Drop Point	DP-1	42° 27.867	-122° 6.827
Drop Point	DP-101	43° 3.817	-122° 4.332
Drop Point	DP-110	42° 46.260	-122° 3.934
Drop Point	DP-120	43° 6.477	-122° 11.036
Drop Point	DP-128	42° 54.510	-122° 23.368
Drop Point	DP-129	42° 43.277	-122° 21.313
Drop Point	DP-140	42° 51.570	-122° 18.818
Drop Point	DP-150	42° 50.307	-122° 8.613
Drop Point	DP-160	42° 49.033	-122° 6.981
Drop Point	DP-174	42° 43.920	-122° 4.332
Drop Point	DP-175	42° 44.116	-122° 4.512
Drop Point	DP-176	42° 46.260	-122° 4.332
Drop Point	DP-177	42° 45.380	-122° 7.219
Drop Point	DP-178	42° 47.624	-122° 3.734
Drop Point	DP-179	42° 41.920	-122° 8.993
Drop Point	DP-180	42° 43.624	-122° 4.439
Drop Point	DP-182	42° 41.920	-122° 8.993
Drop Point	DP-280	42° 51.875	-122° 26.758
Drop Point	DP-282	42° 54.948	-122° 26.059
Drop Point	DP-284	42° 53.950	-122° 23.313
Drop Point	DP-30	42° 50.590	-122° 16.732
Drop Point	DP-35	42° 53.854	-122° 9.164
Drop Point	DP-38	42° 53.454	-122° 4.772
Drop Point	DP-40	42° 48.060	-122° 16.217
Drop Point	DP-49	42° 47.471	-122° 18.869
Drop Point	DP-49	42° 47.133	-122° 19.673
Drop Point	DP-62	42° 47.520	-122° 20.927
Drop Point	DP-90	42° 56.860	-122° 16.167
File Location	Bessie Fire	42° 45.960	-122° 17.671
File Location	Good Fire	42° 53.960	-122° 8.486
File Location	Lick Fire	42° 47.600	-122° 22.342
File Location	Lost	43° 9.978	-122° 13.266
File Location	Red Min Fire	42° 48.415	-122° 20.828
File Location	Springs	42° 54.841	-122° 20.328
File Location	Wiley	42° 41.010	-122° 14.688
File Location	Wiley Meadows	42° 31.410	-122° 12.002
Helibase	Thom	42° 44.062	-122° 1.824
Helibase	Prospect	42° 44.650	-122° 20.203
Helibase	Unmanned	42° 26.893	-122° 1.197
Helibase	W-1	42° 32.790	-122° 18.870
Helipoc	H-100	42° 41.324	-122° 9.360
Helipoc	H-12	42° 48.790	-122° 23.845
Helipoc	H-28	42° 50.090	-122° 23.853
Helipoc	H-30	42° 50.183	-122° 13.376
Helipoc	H-31	42° 40.647	-122° 16.723
Helipoc	H-31	42° 49.658	-122° 14.820
Helipoc	H-70	42° 57.621	-122° 17.271
Helipoc	H-71	42° 56.842	-122° 13.318
Helipoc	H-76	42° 55.580	-122° 13.117
Helipoc	H-77	42° 55.780	-122° 12.211
Helipoc	H-78	42° 56.295	-122° 13.241
Helipoc	H-79	42° 56.344	-122° 13.838
Helipoc	H-82	42° 58.701	-122° 13.898
Helipoc	H-83	42° 58.489	-122° 13.107
Helipoc	H-84	42° 58.774	-122° 16.206
Helipoc	H-89	43° 7.662	-122° 17.730
Helipoc	H-90	43° 1.683	-122° 11.001
Helipoc	H-91	42° 57.933	-122° 9.000
Helipoc	H-92	42° 56.000	-122° 9.400
Helipoc	H-93	42° 53.523	-122° 8.000
Helipoc	H-94	42° 56.683	-122° 9.967
Helipoc	H-95	42° 45.700	-122° 33.558
Helipoc	H-97	42° 42.861	-122° 7.822
KCP	East Zone	42° 40.660	-122° 15.155
Lookout	Rock Cr. Lookout	42° 51.860	-122° 16.926
Lookout	Shera Lookout	42° 56.254	-122° 26.085
Other	Bessie Shaker	42° 45.364	-122° 11.930
Other	Hogmoose Cabin	42° 42.188	-122° 20.000
Other	Innaha Guard Station & Campground	42° 47.360	-122° 24.814
Other	Structure	42° 46.968	-122° 25.827
Other	Structure	42° 46.897	-122° 25.782
Other	Structure	42° 46.849	-122° 25.846
Other	Structure	42° 47.040	-122° 25.814
Other	Structure	42° 46.860	-122° 25.827
Other	Structure	42° 46.892	-122° 25.782
Other	Structure	42° 46.842	-122° 25.846
Other	Value at Risk	42° 47.217	-122° 26.423
Other	Value at Risk	42° 47.183	-122° 26.501
Other	Value at Risk	42° 47.213	-122° 26.423
Other	Value at Risk	42° 47.183	-122° 26.501
Other	Wood Wash Station	42° 56.174	-122° 9.370
Pump	1000 Springs Pump 1	42° 54.790	-122° 14.417
Pump	1000 Springs Pump 2	42° 54.790	-122° 14.495
Pump	P62	43° 7.826	-122° 14.318
Pump	Prospect Pump	43° 7.473	-122° 14.793
RAW	Backeye	43° 2.183	-122° 30.322
RAW	Cherry Peak	42° 46.260	-122° 40.670
RAW	Downed Lake	42° 5.994	-122° 7.920
RAW	IRAWS 45	42° 47.464	-122° 6.614
RAW	Mount Seals	42° 56.167	-122° 26.083
RAW	RSF QD	42° 49.923	-122° 13.311
RAW	Talaska	43° 13.111	-122° 24.753
RAW	Upper Creek	42° 54.418	-122° 26.082
RAW	Williams Center	42° 52.257	-122° 10.710
Repeater	Repeater	42° 30.764	-122° 4.644
Repeater	Alaska Link	42° 40.220	-122° 21.414
Repeater	CMO 1 Red Blaker	42° 48.240	-122° 18.149
Repeater	CMO 3 Bucky	43° 9.240	-122° 13.200
Repeater	CMO 4 Wachsen	42° 56.960	-122° 13.320
Repeater	1-2 Hab	43° 3.881	-122° 16.243
Safety Zone	S-1	42° 43.025	-122° 4.493
Sling Site	S-1	42° 31.290	-122° 7.205
Sling Site	S-73	42° 57.075	-122° 16.137
Sling Site	S-74	42° 56.948	-122° 13.770
Sling Site	S-75	42° 56.773	-122° 14.142
Spot Fire	Spot Fire	42° 32.864	-122° 6.466
Spot Fire	Spot Fire	42° 31.119	-122° 6.436
Spot Fire	Spot Fire	42° 31.899	-122° 7.731
Spot Fire	Spot Fire	42° 31.771	-122° 7.905
Spot Fire	Spot Fire	42° 31.778	-122° 7.838
Spot Fire	Spot Fire	42° 32.271	-122° 9.058
Spot Fire	Spot Fire	42° 31.104	-122° 10.898
Spot Fire	Spot Fire	42° 45.737	-122° 6.633
Water Source	Water Source	42° 48.180	-122° 11.627
Water Source	Water Source	42° 59.795	-122° 22.269
Water Source	Water Source	42° 47.060	-122° 20.073
Water Source	Water Source	42° 47.841	-122° 18.810
Water Source	Water Source	42° 54.770	-122° 18.430
Water Source	Water Source	42° 45.793	-122° 13.577
Water Source	Water Source	42° 45.485	-122° 26.377
Water Source	Water Source	43° 0.052	-122° 20.407
Water Source	Water Source	43° 3.180	-122° 21.460
Water Source	Water Source	43° 0.315	-122° 21.192
Water Source	Water Source	42° 50.664	-122° 15.159
Water Source	Water Source	42° 46.510	-122° 22.310
Water Source	Water Source	43° 3.840	-122° 10.430



Operations Overview Map

High Cascades Complex East Zone

OR-FWF-000514

September 11, 2017

- Camp
- Drop Point
- Fire Location
- First Aid Station
- Helibase
- Helipoc
- Incident Command Post
- Lookout
- Mobile Weather Unit
- Pump
- Repeater
- Safety Zone
- Sling Site
- Spot Fire
- Staging Area
- Water Source
- Other
- Division Break
- Branch Break
- Uncontrolled Fire Edge
- Completed Line
- Completed Dozer Line
- Completed Hand Line
- Road as Completed Line
- Line Break Completed
- Proposed Dozer Line
- Aerial Retardant Drop
- Management Action Point
- Fire Perimeter
- TFR 7_9816
- PacificCrestTrail
- US Highway
- State Highway
- Roads
- Wilderness
- Bureau of Land Management
- U.S. Forest Service
- National Park Service
- U.S. Fish and Wildlife Service
- Bureau of Indian Affairs
- Other Federal
- State
- Local Government
- Private/Unknown

SOUTHWEST AREA

INCIDENT MANAGEMENT TEAM 3

NAD 1983 UTM zone 10N

