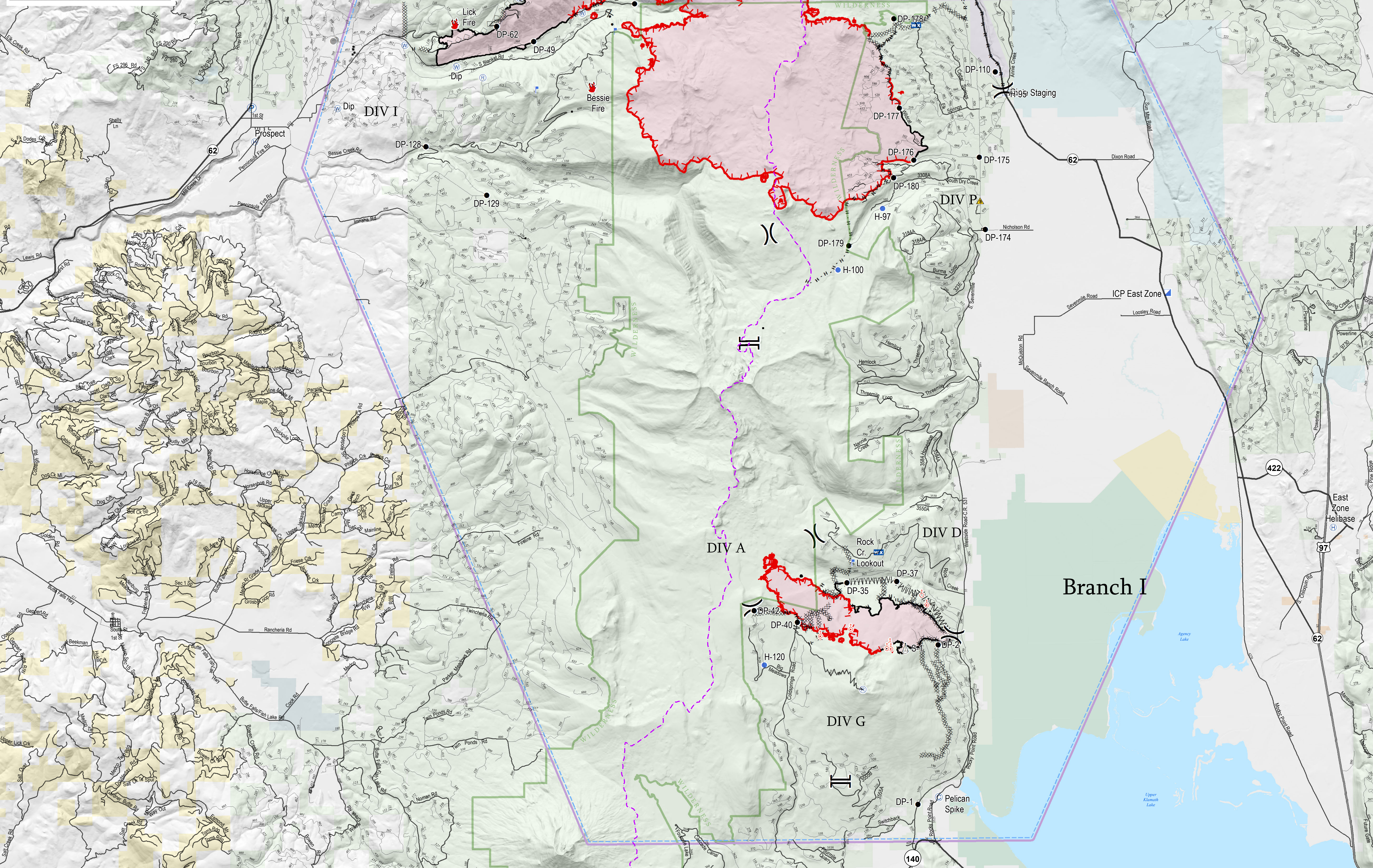
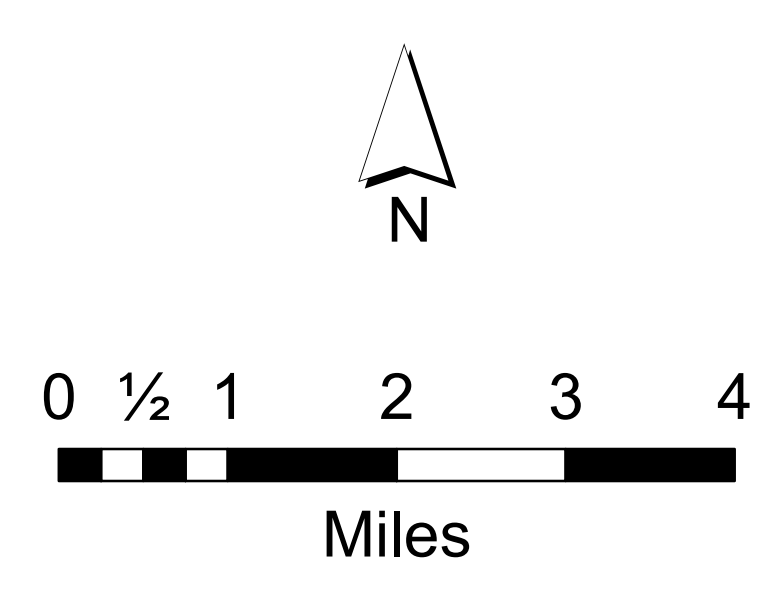


Feature Category	Label	Latitude	Longitude
Camp	Diamond Spike	42° 7.853	122° 8.950
Camp	Polecat Spike	42° 26.007	122° 6.117
Drop Point	DP-1	42° 27.827	122° 6.827
Drop Point	DP-10	42° 28.017	122° 14.832
Drop Point	DP-110	42° 46.209	122° 3.934
Drop Point	DP-120	42° 46.477	122° 11.030
Drop Point	DP-125	42° 44.510	122° 23.508
Drop Point	DP-129	42° 43.277	122° 21.313
Drop Point	DP-140	42° 51.555	122° 9.818
Drop Point	DP-150	42° 50.507	122° 8.613
Drop Point	DP-160	42° 49.833	122° 6.581
Drop Point	DP-175	42° 43.807	122° 4.822
Drop Point	DP-176	42° 44.116	122° 4.512
Drop Point	DP-176	42° 44.063	122° 6.740
Drop Point	DP-177	42° 45.300	122° 7.219
Drop Point	DP-178	42° 47.624	122° 7.274
Drop Point	DP-179	42° 45.828	122° 8.991
Drop Point	DP-180	42° 48.624	122° 7.439
Drop Point	DP-2	42° 31.873	122° 6.993
Drop Point	DP-280	42° 54.318	122° 26.598
Drop Point	DP-282	42° 54.948	122° 26.059
Drop Point	DP-284	42° 55.862	122° 25.313
Drop Point	DP-30	42° 50.509	122° 16.512
Drop Point	DP-35	42° 33.428	122° 9.164
Drop Point	DP-39	42° 33.474	122° 4.727
Drop Point	DP-38	42° 48.005	122° 16.217
Drop Point	DP-40	42° 32.471	122° 10.869
Drop Point	DP-42	42° 32.775	122° 12.437
Drop Point	DP-49	42° 47.133	122° 19.627
Drop Point	DP-60	42° 56.709	122° 10.150
Drop Point	DP-62	42° 45.966	122° 17.471
Fire Location	Basin Fire	42° 52.902	122° 8.848
Fire Location	Lick Fire	42° 47.600	122° 22.342
Fire Location	Lost	42° 57.978	122° 15.266
Fire Location	Red Mtn Fire	42° 48.415	122° 20.867
Fire Location	Stella	42° 54.841	122° 20.828
Fire Location	Wiley	42° 51.817	122° 13.888
Helibase	East Zone	42° 34.303	121° 52.618
Helibase	Prospect	42° 44.653	122° 29.203
Helibase	H-10	42° 41.314	122° 9.369
Helibase	H-12	42° 48.799	122° 23.885
Helibase	H-120	42° 51.410	122° 12.802
Helibase	H-25	42° 50.000	122° 12.853
Helibase	H-28	42° 50.183	122° 13.576
Helibase	H-30	42° 50.427	122° 16.523
Helibase	H-31	42° 49.658	122° 14.820
Helibase	H-70	42° 56.510	122° 19.959
Helibase	H-71	42° 56.842	122° 15.518
Helibase	H-76	42° 55.566	122° 13.117
Helibase	H-77	42° 55.288	122° 19.211
Helibase	H-78	42° 56.295	122° 13.241
Helibase	H-79	42° 56.344	122° 12.838
Helibase	H-82	42° 56.801	122° 18.307
Helibase	H-83	42° 58.489	122° 15.107
Helibase	H-84	42° 58.715	122° 14.218
Helibase	H-88	42° 57.774	122° 16.206
Helibase	H-89	42° 57.682	122° 8.730
Helibase	H-90	42° 57.604	122° 7.107
Helibase	H-91	42° 57.863	122° 9.007
Helibase	H-92	42° 56.510	122° 19.959
Helibase	H-95	42° 45.795	122° 3.558
Helibase	H-97	42° 42.861	122° 7.827
Lookout	ICP East Zone	42° 49.022	122° 58.355
Lookout		42° 45.914	122° 19.616
Lookout	Beck Cr. Lookout	42° 47.278	122° 16.988
Lookout	Stella Lookout	42° 56.244	122° 26.085
RAWS	Cherry Peak	42° 34.308	122° 8.070
RAWS	Diamond Lake	42° 57.594	122° 7.920
RAWS	ICP East Zone	42° 49.022	122° 58.355
RAWS	Mount Stella	42° 56.167	122° 26.083
RAWS	Rock Cr. Lookout	42° 49.658	122° 13.811
RAWS	Talrose	42° 53.113	122° 24.755
RAWS	Union Creek	42° 54.418	122° 26.682
RAWS	Williams Canyon	42° 57.427	122° 10.210
Other	Value at Risk	42° 47.217	122° 26.423
Other	Value at Risk	42° 47.183	122° 26.501
Other	Value at Risk	42° 47.183	122° 26.501
Other	Value at Risk	42° 47.183	122° 26.501
Pump	1000 Springs Pump 1	42° 54.794	122° 18.417
Pump	1000 Springs Pump 2	42° 54.790	122° 18.405
Pump	P69	42° 7.280	122° 15.266
Pump	P61	42° 7.820	122° 14.318
Pump	P63	42° 7.479	122° 14.703
Pump	Prospect Pump	42° 45.521	122° 29.297
Repeater		42° 30.764	122° 8.664
Repeater		42° 30.764	122° 8.664
Repeater	Aircraft Link	42° 46.235	122° 21.414
Repeater	CH21 - Red Bluffs	42° 46.209	122° 20.109
Repeater	CH21 - Baldy	42° 52.864	122° 13.800
Repeater	CH21 - Watchman	42° 56.560	122° 10.520
Repeater	ICP - Dip	42° 31.381	122° 19.483
Roadway Zone		42° 43.023	122° 4.493
Sling Site	S-74	42° 37.781	122° 2.208
Sling Site	S-74	42° 56.948	122° 15.770
Sling Site	S-75	42° 56.713	122° 14.142
Spot Fire		42° 32.864	122° 6.466
Spot Fire		42° 33.113	122° 6.630
Spot Fire		42° 31.843	122° 7.911
Spot Fire		42° 31.771	122° 7.700
Spot Fire		42° 31.778	122° 7.823
Spot Fire		42° 32.271	122° 9.058
Spot Fire		42° 32.104	122° 10.098
Staging Area	Annie Staging	42° 45.737	122° 14.637
Water Source		42° 58.170	122° 17.627
Water Source		42° 59.795	122° 22.269
Water Source		42° 47.664	122° 24.673
Water Source		42° 47.841	122° 18.019
Water Source	Dip	42° 10.664	122° 22.407
Water Source	Dip	42° 45.485	122° 26.577
Water Source	Dip	42° 43.180	122° 22.449
Water Source	Dip	42° 43.175	122° 22.522
Water Source	Dip	42° 46.510	122° 22.318
Water Source	Dip	42° 50.966	122° 19.483
Water Source	Dip	42° 54.770	122° 19.483
Water Source	Dip	42° 45.755	122° 3.579
Water Source	Trank	42° 15.848	122° 19.488



- Camp
- Drop Point
- 🔥 Fire Location
- 🚁 Helibase
- 👤 Incident Command Post
- 👁 Lookout
- 📶 Mobile Weather Unit
- 🚰 Pump
- 📡 Repeater
- 🛡 Safety Zone
- 🪂 Sling Site
- 🚚 Spot Fire
- 📍 Staging Area
- 💧 Water Source
- ⊙ Other
- ⌘ Division Break
- ⌘ Branch Break
- ⌘ Road as Completed Line
- ⌘ Line Break Completed
- ⌘ Proposed Dozer Line
- ⌘ Aerial Retardant Drop
- 🔴 Fire Perimeter
- 🏠 Structures
- 📏 TFR 7_9816
- 🚚 Pacific Crest Trail
- 📏 US Highway
- 🛣 State Highway
- 🛣 Roads
- 🌳 Wilderness
- 🏠 Bureau of Land Management
- 🌳 U.S. Forest Service
- 🏠 National Park Service
- 🌳 U.S. Fish and Wildlife Service
- 🏠 Bureau of Indian Affairs
- 🏠 Other Federal
- 🏠 State
- 🏠 Local Government
- 🏠 Private/Unknown

Operations Overview Map
High Cascades Complex East Zone
OR-FWF-000514
 September 14, 2017



SOUTHWEST AREA

INCIDENT MANAGEMENT TEAM 3

 NAD 1983 UTM zone 10N