

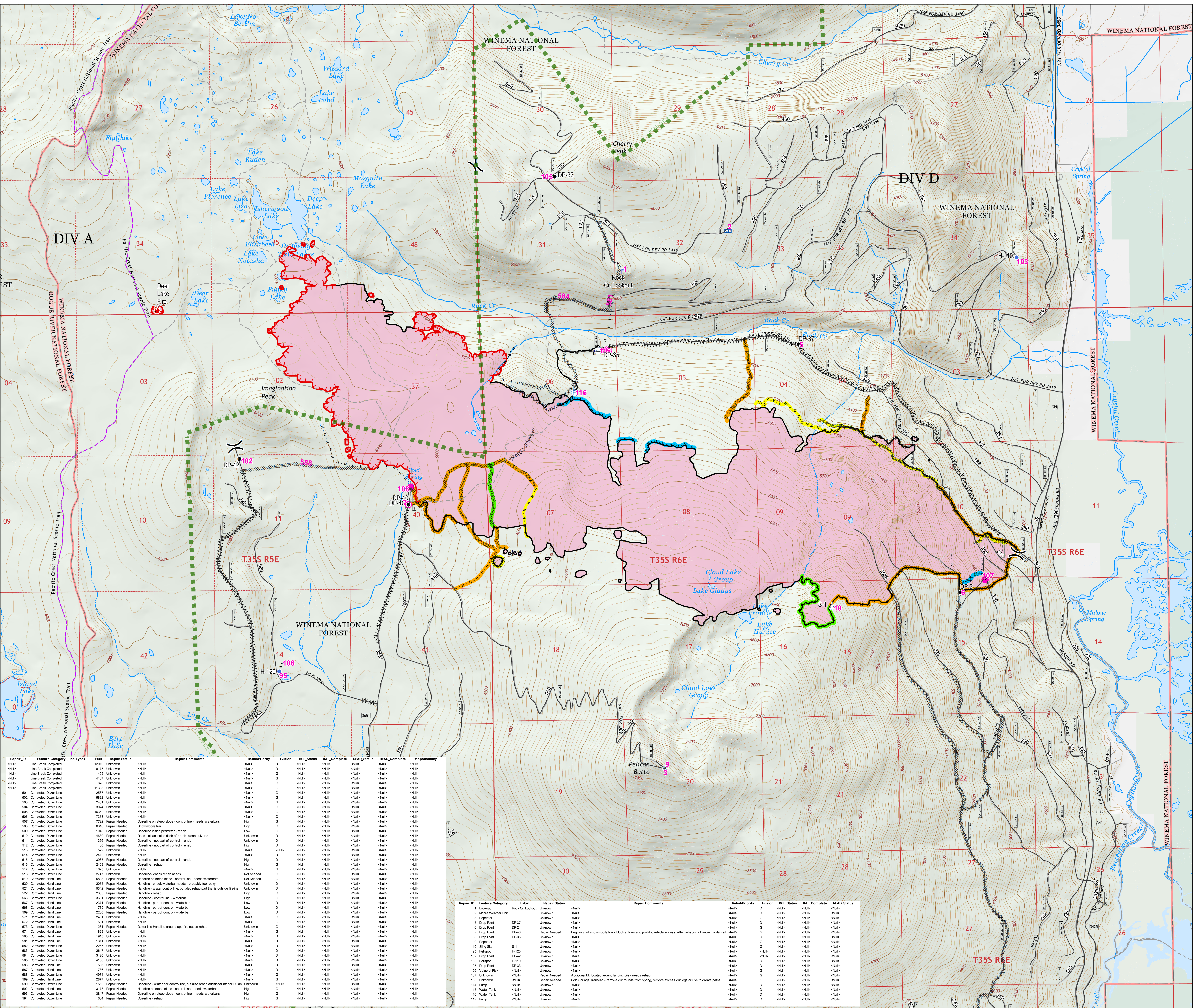


Ops/Repair Map
 North Pelican Fire
 High Cascades
 Complex East Zone
 OR-FWF-000514

September 21, 2017

- Drop Point
- 🔥 Fire Location
- Helispot
- 👁 Lookout
- 🚚 Mobile Weather Unit
- 🚰 Pump
- 📡 Repeater
- 🪂 Sling Site
- 🛢 Water Tank
- ⚠ Value at Risk
- Rehab Point
- ⎓ Division Break
- 🔴 Uncontrolled Fire Edge
- Completed Line
- ⋯ Completed Dozer Line
- ⋯ Completed Hand Line
- ⋯ Line Break Completed
- 🔴 Fire Perimeter
- ⋯ PacificCrestTrail
- Roads
- ⋯ Trails
- 🌲 Wilderness
- Land Status
- 🌲 U.S. Forest Service
- 🌲 U.S. Fish and Wildlife Service
- ⬜ Private/Unknown

- RehabPriority**
- 🟠 High
 - 🟡 Low
 - 🟢 Not Needed
 - 🟠 Unknown
 - Rehab Needed



Repair_ID	Feature Category (Line Type)	Feet	Repair Status	Repair Comments	RehabPriority	Division	IMT_Status	IMT_Complete	READ_Status	READ_Complete	Responsibility
<null>	Line Break Completed	12010	Unknown	<null>	<null>	D	<null>	<null>	<null>	<null>	<null>
<null>	Line Break Completed	8175	Unknown	<null>	<null>	D	<null>	<null>	<null>	<null>	<null>
<null>	Line Break Completed	1405	Unknown	<null>	<null>	D	<null>	<null>	<null>	<null>	<null>
<null>	Line Break Completed	4107	Unknown	<null>	<null>	G	<null>	<null>	<null>	<null>	<null>
<null>	Line Break Completed	408	Unknown	<null>	<null>	D	<null>	<null>	<null>	<null>	<null>
501	Completed Dozer Line	11993	Unknown	<null>	<null>	G	<null>	<null>	<null>	<null>	<null>
502	Completed Dozer Line	1287	Unknown	<null>	<null>	G	<null>	<null>	<null>	<null>	<null>
503	Completed Dozer Line	5832	Unknown	<null>	<null>	G	<null>	<null>	<null>	<null>	<null>
504	Completed Dozer Line	2481	Unknown	<null>	<null>	G	<null>	<null>	<null>	<null>	<null>
505	Completed Dozer Line	3074	Unknown	<null>	<null>	G	<null>	<null>	<null>	<null>	<null>
506	Completed Dozer Line	16352	Unknown	<null>	<null>	G	<null>	<null>	<null>	<null>	<null>
506	Completed Dozer Line	7373	Unknown	<null>	<null>	G	<null>	<null>	<null>	<null>	<null>
507	Completed Dozer Line	7792	Repair Needed	Doxline on steep slope - control line - needs waterbars	High	D	<null>	<null>	<null>	<null>	<null>
508	Completed Dozer Line	6310	Repair Needed	Snow mobile trail	High	G	<null>	<null>	<null>	<null>	<null>
509	Completed Dozer Line	1048	Repair Needed	Doxline - not part of control - rehab	Low	G	<null>	<null>	<null>	<null>	<null>
510	Completed Dozer Line	4630	Repair Needed	Road - clean inside ditch of brush, clean culverts.	Unknown	D	<null>	<null>	<null>	<null>	<null>
511	Completed Dozer Line	1366	Repair Needed	Doxline - not part of control - rehab	Unknown	D	<null>	<null>	<null>	<null>	<null>
512	Completed Dozer Line	1400	Repair Needed	Doxline - not part of control - rehab	High	D	<null>	<null>	<null>	<null>	<null>
513	Completed Dozer Line	522	Unknown	<null>	<null>	D	<null>	<null>	<null>	<null>	<null>
514	Completed Dozer Line	2412	Unknown	<null>	<null>	D	<null>	<null>	<null>	<null>	<null>
515	Completed Dozer Line	3965	Repair Needed	Doxline - not part of control - rehab	High	D	<null>	<null>	<null>	<null>	<null>
516	Completed Dozer Line	2463	Repair Needed	Doxline - rehab	High	G	<null>	<null>	<null>	<null>	<null>
517	Completed Dozer Line	1029	Unknown	<null>	<null>	G	<null>	<null>	<null>	<null>	<null>
518	Completed Dozer Line	2747	Unknown	<null>	<null>	G	<null>	<null>	<null>	<null>	<null>
519	Completed Dozer Line	5088	Repair Needed	Handline on steep slope - control line - needs waterbars	Not Needed	G	<null>	<null>	<null>	<null>	<null>
520	Completed Dozer Line	2075	Repair Needed	Handline - check waterbar needs - probably too rocky	Unknown	D	<null>	<null>	<null>	<null>	<null>
521	Completed Hand Line	5342	Repair Needed	Handline - w ater control line, but also rehab part that is outside fireline	Unknown	D	<null>	<null>	<null>	<null>	<null>
522	Completed Hand Line	2333	Repair Needed	Handline - rehab	Unknown	D	<null>	<null>	<null>	<null>	<null>
566	Completed Dozer Line	3661	Repair Needed	Doxline - control line - w waterbar	High	G	<null>	<null>	<null>	<null>	<null>
567	Completed Hand Line	2271	Repair Needed	Handline - part of control - w waterbar	Low	D	<null>	<null>	<null>	<null>	<null>
568	Completed Hand Line	736	Repair Needed	Handline - part of control - w waterbar	Low	D	<null>	<null>	<null>	<null>	<null>
569	Completed Hand Line	2280	Repair Needed	Handline - part of control - w waterbar	Low	D	<null>	<null>	<null>	<null>	<null>
571	Completed Hand Line	2401	Unknown	<null>	<null>	G	<null>	<null>	<null>	<null>	<null>
572	Completed Hand Line	501	Unknown	<null>	<null>	G	<null>	<null>	<null>	<null>	<null>
573	Completed Dozer Line	1311	Repair Needed	Dozer line Handline around spofire needs rehab	Unknown	G	<null>	<null>	<null>	<null>	<null>
574	Completed Hand Line	1823	Unknown	<null>	<null>	D	<null>	<null>	<null>	<null>	<null>
580	Completed Hand Line	1915	Unknown	<null>	<null>	D	<null>	<null>	<null>	<null>	<null>
581	Completed Hand Line	1311	Unknown	<null>	<null>	D	<null>	<null>	<null>	<null>	<null>
582	Completed Dozer Line	2267	Unknown	<null>	<null>	D	<null>	<null>	<null>	<null>	<null>
583	Completed Dozer Line	2647	Unknown	<null>	<null>	D	<null>	<null>	<null>	<null>	<null>
584	Completed Dozer Line	3120	Unknown	<null>	<null>	D	<null>	<null>	<null>	<null>	<null>
585	Completed Dozer Line	4158	Unknown	<null>	<null>	D	<null>	<null>	<null>	<null>	<null>
586	Completed Dozer Line	536	Unknown	<null>	<null>	D	<null>	<null>	<null>	<null>	<null>
587	Completed Dozer Line	708	Unknown	<null>	<null>	D	<null>	<null>	<null>	<null>	<null>
588	Completed Dozer Line	4074	Unknown	<null>	<null>	D	<null>	<null>	<null>	<null>	<null>
589	Completed Dozer Line	2877	Unknown	<null>	<null>	D	<null>	<null>	<null>	<null>	<null>
590	Completed Dozer Line	1552	Repair Needed	Doxline - w ater bar control line, but also rehab additional interior DL an	Unknown	D	<null>	<null>	<null>	<null>	<null>
592	Completed Hand Line	3173	Repair Needed	Handline on steep slope - control line - needs waterbars	High	G	<null>	<null>	<null>	<null>	<null>
593	Completed Dozer Line	2847	Repair Needed	Doxline on steep slope - control line - needs waterbars	High	G	<null>	<null>	<null>	<null>	<null>
594	Completed Dozer Line	1634	Repair Needed	Doxline - rehab	High	G	<null>	<null>	<null>	<null>	<null>

Repair_ID	Feature Category	Label	Repair Status	Repair Comments	RehabPriority	Division	IMT_Status	IMT_Complete	READ_Status
1	Lookout	Rock Cr Lookout	Unknown	<null>	<null>	D	<null>	<null>	<null>
2	Mobile Weather Unit		Unknown	<null>	<null>	D	<null>	<null>	<null>
3	Repeater		Unknown	<null>	<null>	G	<null>	<null>	<null>
4	Drop Point	DP-37	Unknown	<null>	<null>	G	<null>	<null>	<null>
5	Drop Point	DP-32	Unknown	<null>	<null>	G	<null>	<null>	<null>
6	Drop Point	DP-33	Unknown	<null>	<null>	G	<null>	<null>	<null>
7	Drop Point	DP-40	Repair Needed	Beginning of snow mobile trail - block entrance to prohibit vehicle access, after rehabing of snow mobile trail	<null>	G	<null>	<null>	<null>
8	Drop Point	DP-35	Unknown	<null>	<null>	G	<null>	<null>	<null>
9	Repeater		Unknown	<null>	<null>	G	<null>	<null>	<null>
10	Sling Site	S-1	Unknown	<null>	<null>	G	<null>	<null>	<null>
11	Helispot	H-120	Unknown	<null>	<null>	D	<null>	<null>	<null>
95	Helispot	H-120	Unknown	<null>	<null>	D	<null>	<null>	<null>
102	Drop Point	DP-42	Unknown	<null>	<null>	D	<null>	<null>	<null>
103	Helispot	H-110	Unknown	<null>	<null>	D	<null>	<null>	<null>
105	Drop Point	DP-33	Unknown	<null>	<null>	D	<null>	<null>	<null>
108	Value at Risk		Unknown	<null>	<null>	D	<null>	<null>	<null>
114	Repeater		Unknown	<null>	<null>	D	<null>	<null>	<null>
109	Unknown		Repair Needed	Additional DL located around landing pile - needs rehab	<null>	G	<null>	<null>	<null>
116	Water Tank		Unknown	Cold Springs Trailhead - remove out rounds from spring, remove excess cut logs or use to create paths	<null>	D	<null>	<null>	<null>
117	Pump		Unknown	<null>	<null>	D	<null>	<null>	<null>

0 1/4 1/2 1 Miles

NAD 1983 UTM zone 10N