



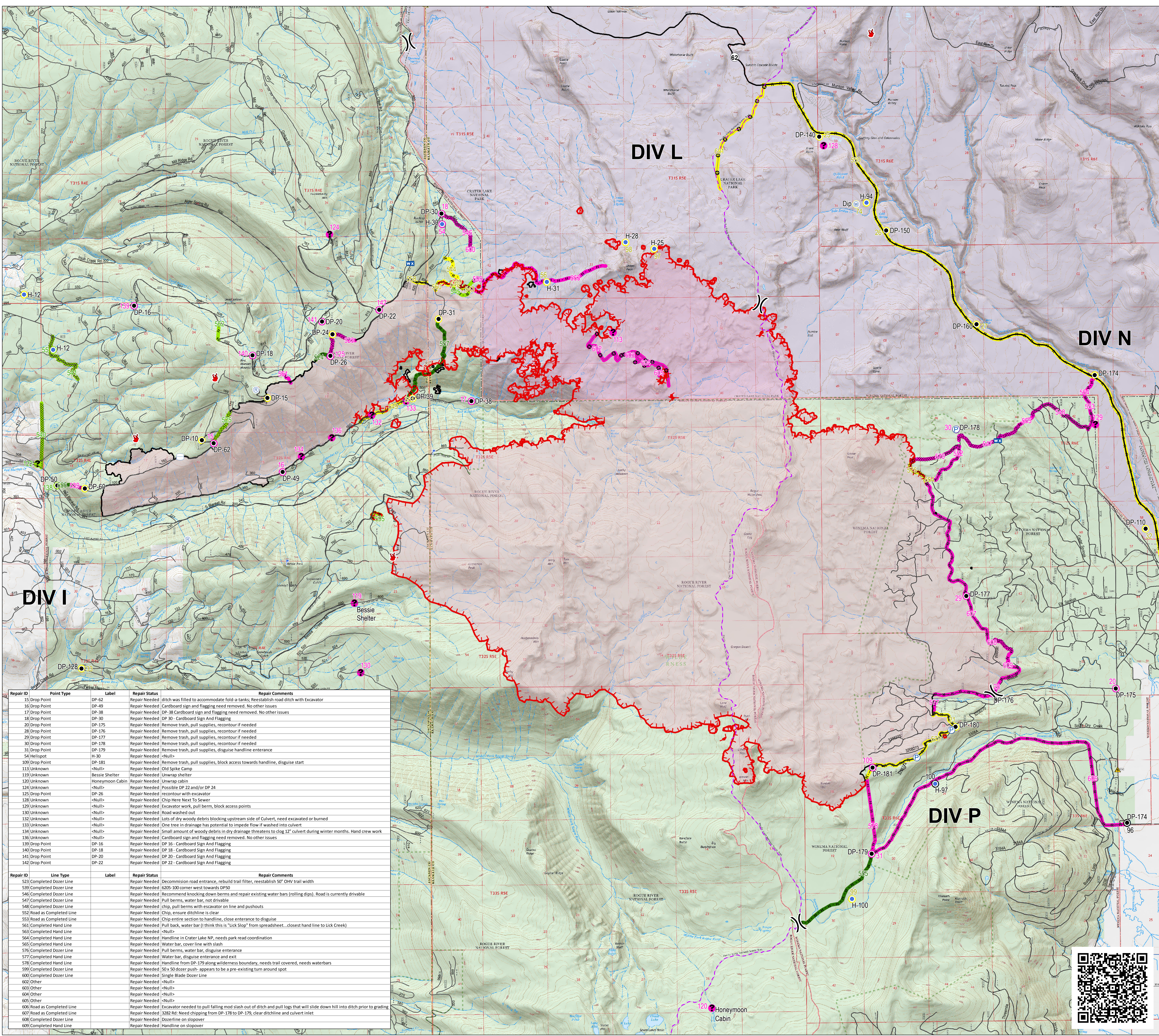
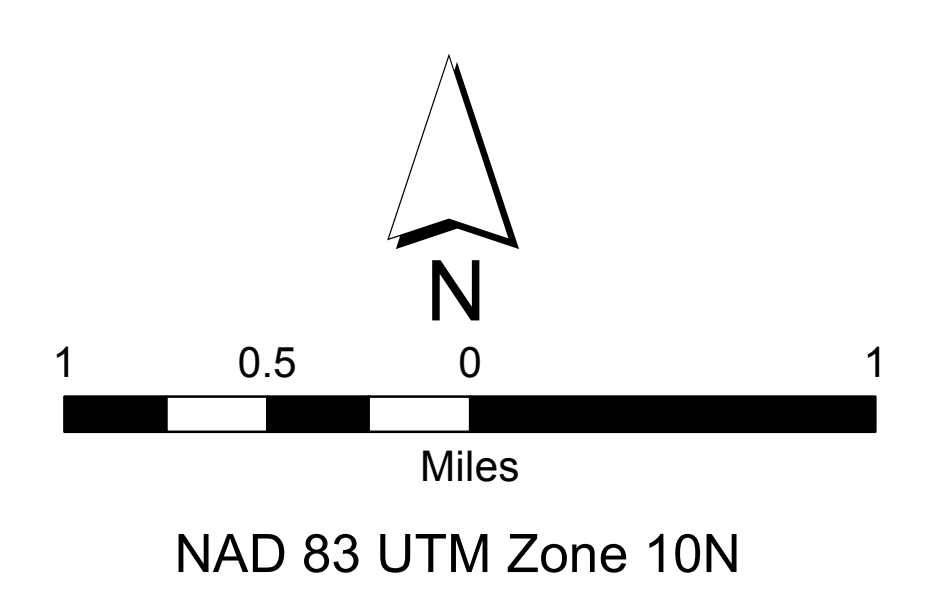
REPAIR MAP
BLANKET CREEK FIRE
HIGH CASCADES
COMPLEX EAST ZONE
33,322 ACRES
OR-FWF-000514
SEPTEMBER 22, 2017

- Structures
- Drop Point
- Helispot
- ⌚ Lookout
- 🚚 Mobile Weather Unit
- Ⓟ Pump
- Ⓜ Repeater
- ⚠ Safety Zone
- 📍 Staging Area
- 🌊 Water Source
- 🛢 Water Tank
- ❓ Unknown
- ⌘ Division Break
- 🔴 Uncontrolled Fire Edge
- Completed Line
- ⋯ Completed Dozer Line
- · - · - Completed Hand Line
- · - · - Road as Completed Line
- Other
- PacificCrestTrail
- 🌲 Wilderness

- Repair Points**
- Completed - Inspected
 - No Repair Needed
 - Repair Needed
 - Not Evaluated

- Repair Lines**
- Completed - Inspected
 - No Repair Needed
 - Repair Needed
 - Not Evaluated

- Land Status**
- 🌲 U.S. Forest Service
 - 🏔 National Park Service
 - 🏠 Private/Unknown



Repair ID	Point Type	Label	Repair Status	Repair Comments
15	Drop Point	DP-62	Repair Needed	ditch was filled to accommodate fold-a-tanks; Reestablish road ditch with excavator
16	Drop Point	DP-49	Repair Needed	Cardboard sign and flagging need removed. No other issues
17	Drop Point	DP-38	Repair Needed	DP-38 Cardboard sign and flagging need removed. No other issues
18	Drop Point	DP-30	Repair Needed	DP-30 - Cardboard Sign And Flagging
20	Drop Point	DP-175	Repair Needed	Remove trash, pull supplies, recontour if needed
28	Drop Point	DP-176	Repair Needed	Remove trash, pull supplies, recontour if needed
29	Drop Point	DP-177	Repair Needed	Remove trash, pull supplies, recontour if needed
30	Drop Point	DP-178	Repair Needed	Remove trash, pull supplies, recontour if needed
31	Drop Point	DP-179	Repair Needed	Remove trash, pull supplies, disguise handline entrance
54	Helispot	H-30	Repair Needed	<Null>
109	Drop Point	DP-181	Repair Needed	Remove trash, pull supplies, block access towards handline, disguise start
113	Unknown	<Null>	Repair Needed	Old Spike Camp
119	Unknown	Bessie Shelter	Repair Needed	Unwrap shelter
120	Unknown	Honeymoon Cabin	Repair Needed	Unwrap cabin
124	Unknown	<Null>	Repair Needed	Possible DP 22 and/or DP 24
125	Drop Point	DP-26	Repair Needed	recontour with excavator
128	Unknown	<Null>	Repair Needed	Chip Here Next to Sewer
129	Unknown	<Null>	Repair Needed	Excavator work, pull berms, block access points
130	Unknown	<Null>	Repair Needed	Road washed out
132	Unknown	<Null>	Repair Needed	Lots of dry woody debris blocking upstream side of Culvert. need excavated or burned
133	Unknown	<Null>	Repair Needed	One tree in drainage has potential to impede flow if washed into culvert
134	Unknown	<Null>	Repair Needed	Small amount of woody debris in dry drainage threatens to clog 12" culvert during winter months. Hand crew work
136	Unknown	<Null>	Repair Needed	Cardboard sign and flagging need removed. No other issues
139	Drop Point	DP-16	Repair Needed	DP-16 - Cardboard Sign And Flagging
140	Drop Point	DP-18	Repair Needed	DP-18 - Cardboard Sign And Flagging
141	Drop Point	DP-20	Repair Needed	DP-20 - Cardboard Sign And Flagging
142	Drop Point	DP-22	Repair Needed	DP-22 - Cardboard Sign And Flagging

Repair ID	Line Type	Label	Repair Status	Repair Comments
523	Completed Dozer Line	<Null>	Repair Needed	Decommission road entrance, rebuild trail filter, reestablish 50' OHV trail width
539	Completed Dozer Line	<Null>	Repair Needed	6205-100 corner west towards DP50
546	Completed Dozer Line	<Null>	Repair Needed	Recommend knocking down berms and repair existing water bars (rolling clips). Road is currently drivable
547	Completed Dozer Line	<Null>	Repair Needed	Pull berms, water bar, not drivable
548	Completed Dozer Line	<Null>	Repair Needed	chip, pull berms with excavator on line and pushouts
552	Road as Completed Line	<Null>	Repair Needed	Chip, ensure ditchline is clear
553	Road as Completed Line	<Null>	Repair Needed	Chip entire section to handline, close entrance to digulge
561	Completed Hand Line	<Null>	Repair Needed	Pull back, water bar (I think this is "Lick Slop" from spreadsheet... closest hand line to Lick Creek)
563	Completed Hand Line	<Null>	Repair Needed	<Null>
564	Completed Hand Line	<Null>	Repair Needed	Handline in Crater Lake NP, needs park read coordination
565	Completed Hand Line	<Null>	Repair Needed	Water bar, cover line with slash
576	Completed Dozer Line	<Null>	Repair Needed	Pull berms, water bar, disguise entrance
577	Completed Hand Line	<Null>	Repair Needed	Water bar, disguise entrance and exit
578	Completed Hand Line	<Null>	Repair Needed	Handline from DP-179 along wilderness boundary, needs trail covered, needs waterbars
599	Completed Dozer Line	<Null>	Repair Needed	50 x 50 dozer push- appears to be a pre-existing turn around spot
600	Completed Dozer Line	<Null>	Repair Needed	Single Blade Dozer Line
602	Other	<Null>	Repair Needed	<Null>
603	Other	<Null>	Repair Needed	<Null>
604	Other	<Null>	Repair Needed	<Null>
605	Other	<Null>	Repair Needed	<Null>
606	Road as Completed Line	<Null>	Repair Needed	Excavator needed to pull falling mod slash out of ditch and pull logs that will slide down hill into ditch prior to grading
607	Road as Completed Line	<Null>	Repair Needed	3282 Rd: Need chipping from DP-178 to DP-179, clear ditchline and culvert inlet
608	Completed Dozer Line	<Null>	Repair Needed	Dozerline on sloopover
609	Completed Hand Line	<Null>	Repair Needed	Handline on sloopover

