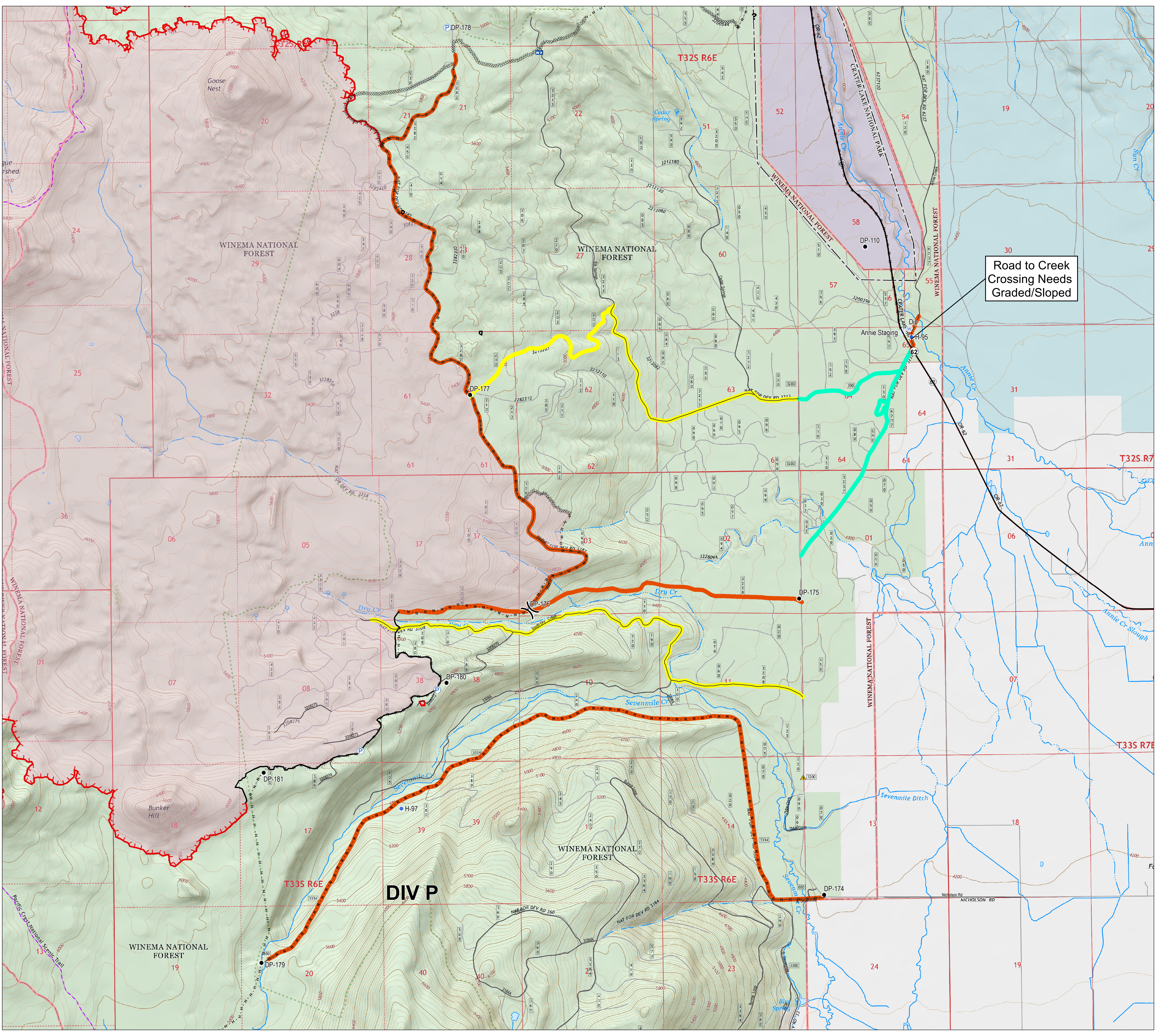




ROAD GRADING  
 PRIORITIZATION MAP  
 BLANKET CREEK FIRE  
 HIGH CASCADES  
 COMPLEX EAST ZONE  
 33,322 ACRES  
 OR-FWF-000514  
 SEPTEMBER 22, 2017

- Drop Point
- Helispot
- ☒ Mobile Weather Unit
- Ⓟ Pump
- ▲ Safety Zone
- Ⓢ Staging Area
- Ⓜ Water Source
- ? Unknown
- ( ) Division Break
- Uncontrolled Fire Edge
- Completed Line
- Completed Dozer Line
- Completed Hand Line
- Road as Completed Line
- PacificCrestTrail
- Wilderness
- Road Grading Prioritization**
- High
- Moderate
- Low
- Land Status**
- U.S. Forest Service
- National Park Service
- State
- Private/Unknown



Road to Creek Crossing Needs Graded/Sloped

